

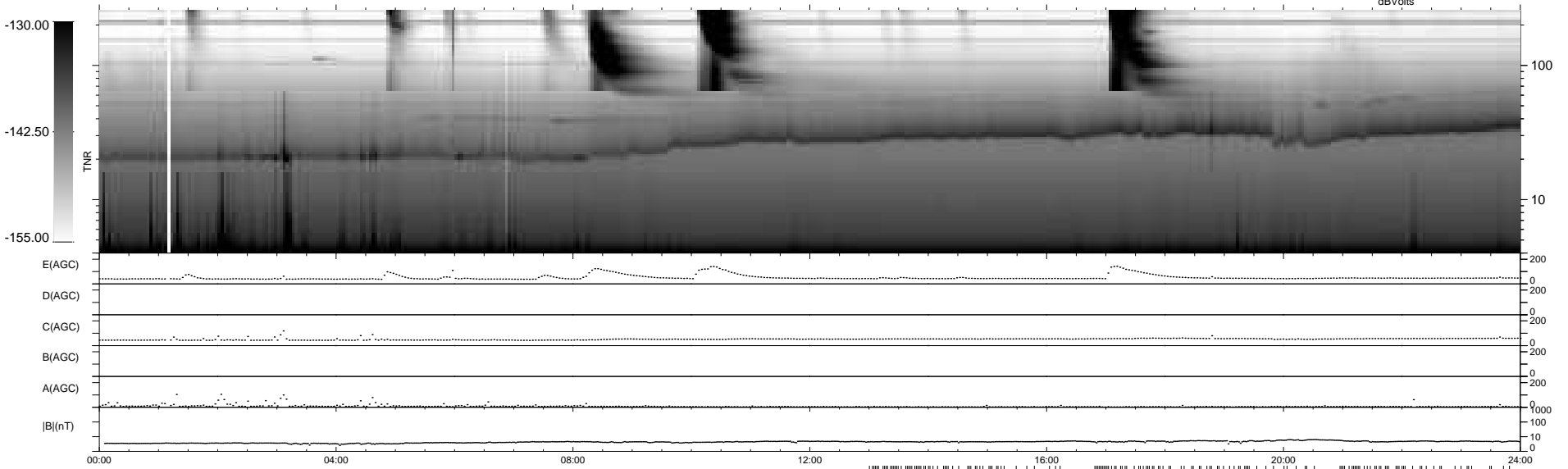
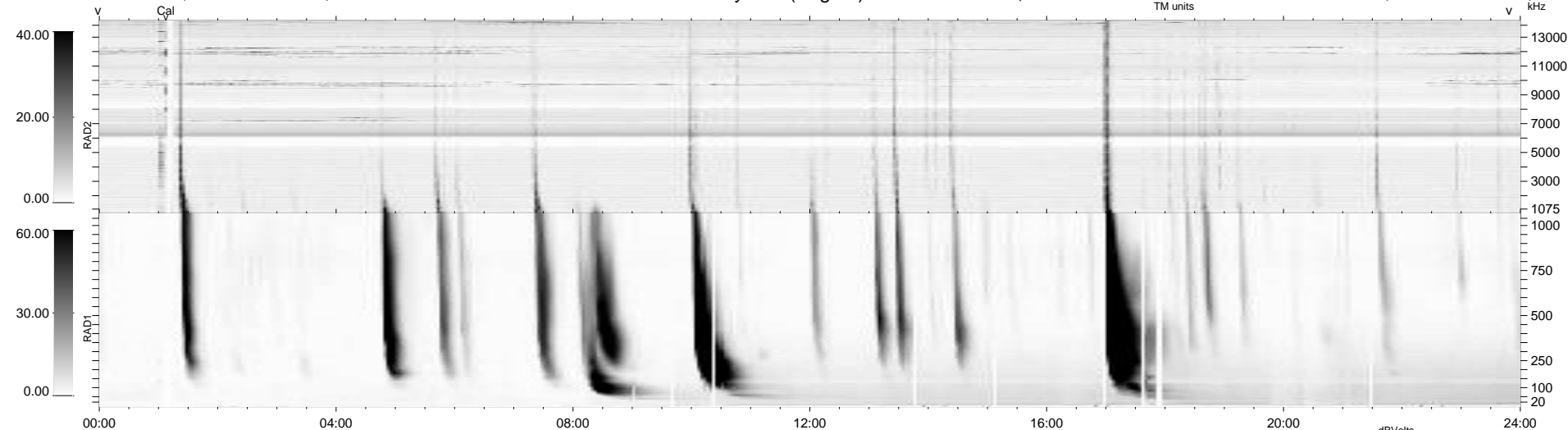
158 bad + 619 good MF/939MF projected (65%) - 162 missing MFs
 Avg interval = 180 secs
 Re = 253.00 (233.37, -97.07, 11.40 GSE)

windlib 2.0b

LZ version =

WIND/WAVES Summary Plot (Page 1) for 29-APR-2016, DOY = 120

DAILY 2017-03-21 14:16:33
 Re = 252.46 (232.36, -98.10, 11.04 GSE)



RAD2
 Antenna Ey
 Mode LIN(1)
 SUM/SEP SEP
 Toggle OFF

RAD1
 Antenna Ex
 Mode LIS(2/4)
 SUM/SEP SUM
 Toggle OFF

TNR
 Antenna ExEy
 Mode A-32
 Sweep ACE