

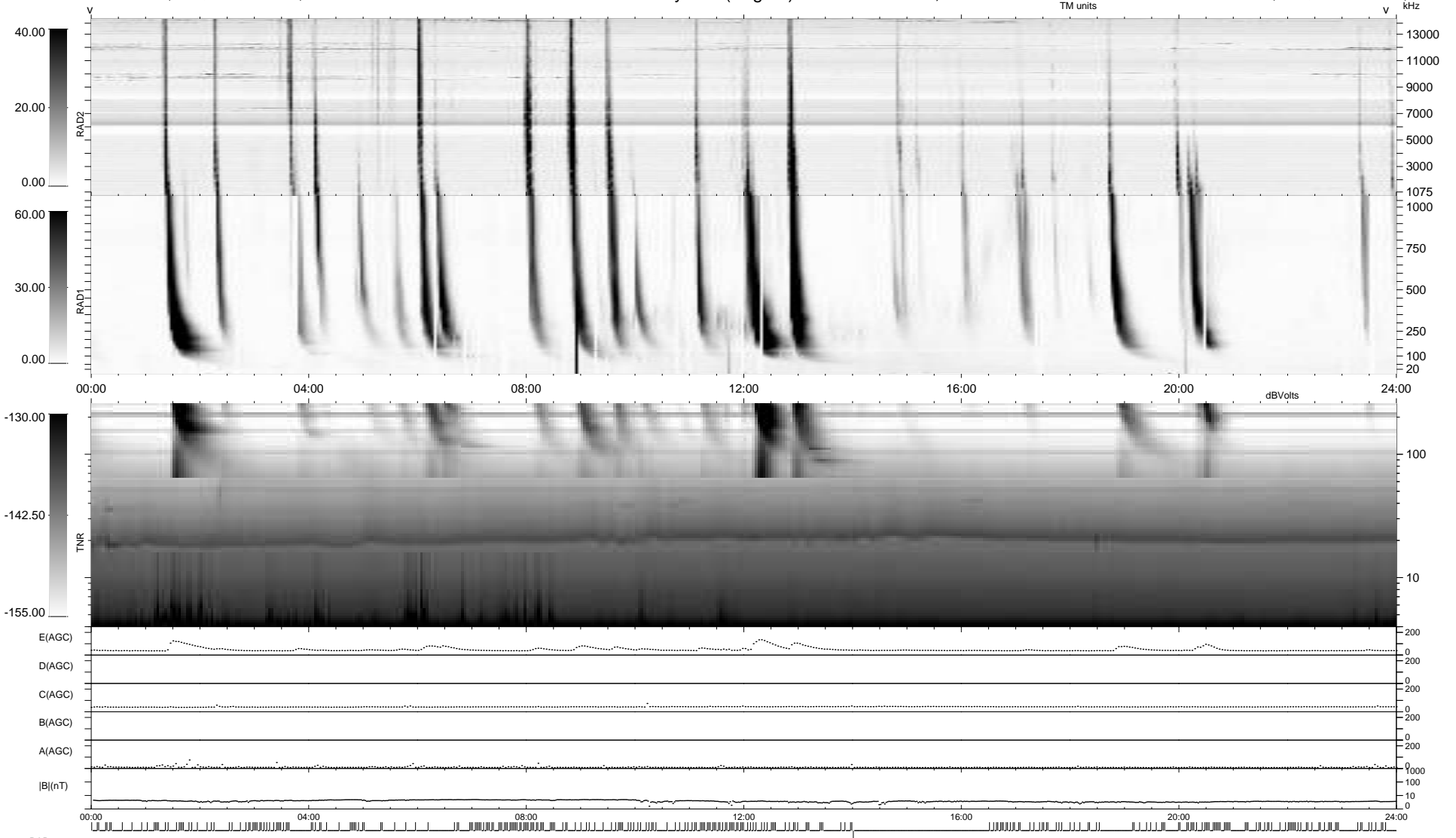
1 bad + 630 good MF/939MF projected (67%) - 308 missing MFs
Avg interval = 180 secs
Re = 253.51 (234.38, -95.89, 11.76 GSE)

windlib 2.0b

LZ version =

WIND/WAVES Summary Plot (Page 1) for 28-APR-2016, DOY = 119

DAILY 2017-03-21 14:16:07
Re = 253.01 (233.37, -97.06, 11.41 GSE)



RAD2
Antenna Ey
Mode LIN(1)
SUM/SEP SEP
Toggle OFF
RAD1
Antenna Ex
Mode LIS(2/4)
SUM/SEP SUM
Toggle OFF
TNR
Antenna ExEy
Mode A-32
Sweep ACE