

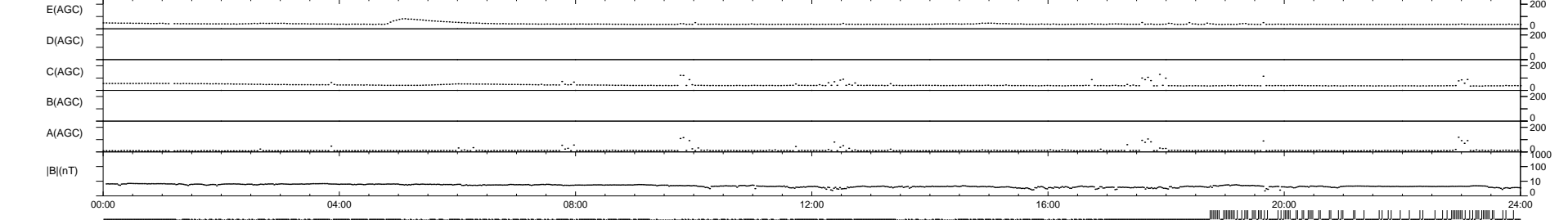
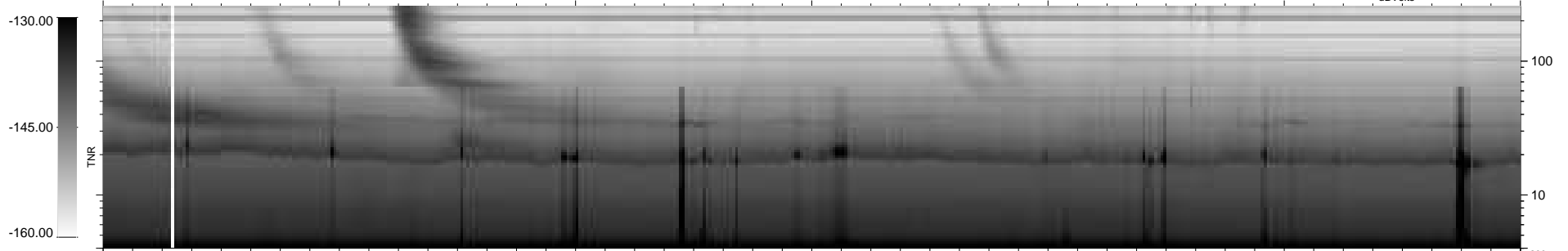
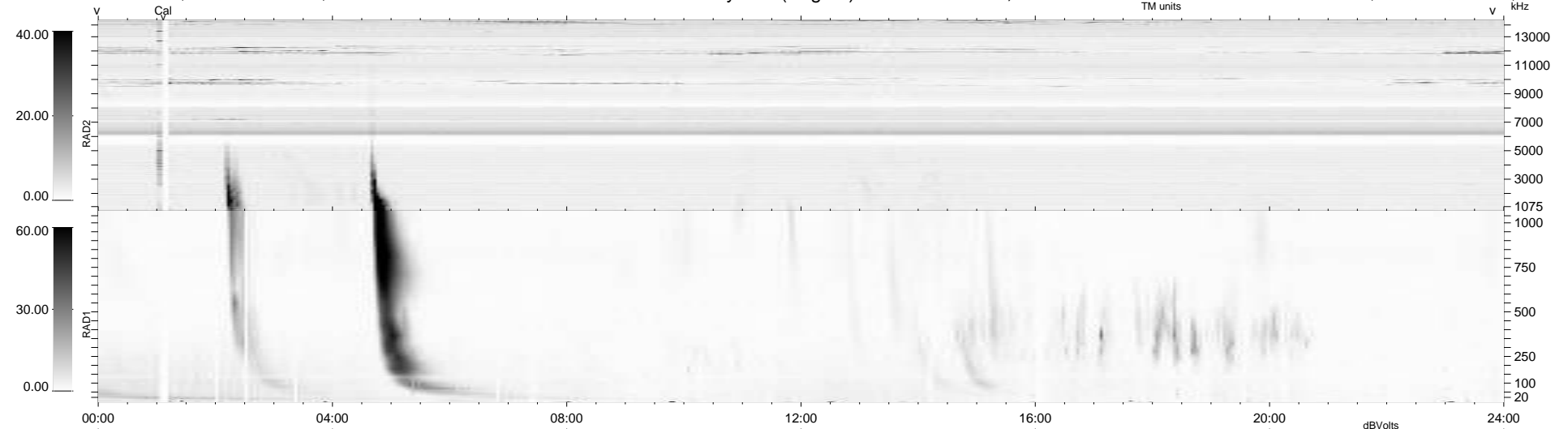
228 bad + 622 good MF/939MF projected (66%) - 89 missing MFs
 Avg interval = 180 secs
 Re = -254.87 (237.53, -91.53, 12.73 GSE)

windlib 2.0b

LZ version =

WIND/WAVES Summary Plot (Page 1) for 25-APR-2016, DOY = 116

DAILY 2017-03-21 14:14:25
 Re = 254.44 (236.47, -93.10, 12.42 GSE)



```

RAD2
Antenna Ey .....
Mode LIN(1) .....
SUM/SEP SEP .....
Toggle OFF .....

RAD1
Antenna Ex .....
Mode LIS(2,4) .....
SUM/SEP SUM .....
Toggle OFF .....

TNR
Antenna ExEy .....
Mode A-32 .....
Sweep ACE .....
  
```