

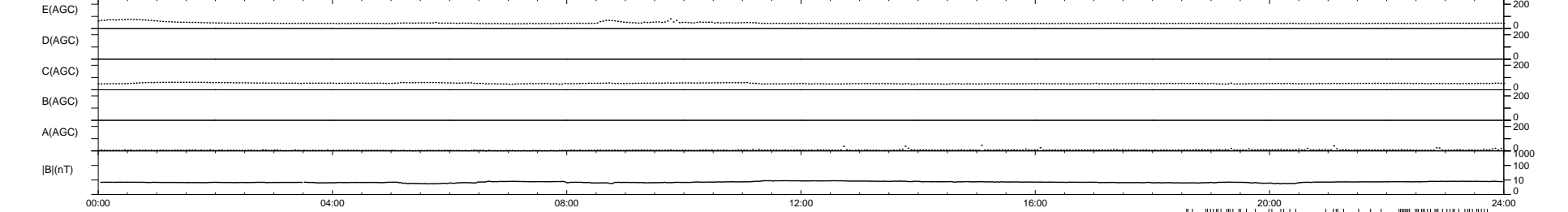
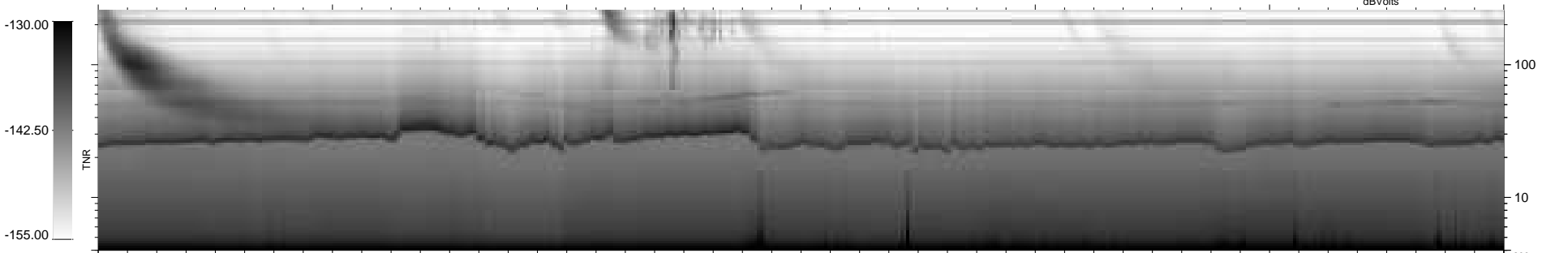
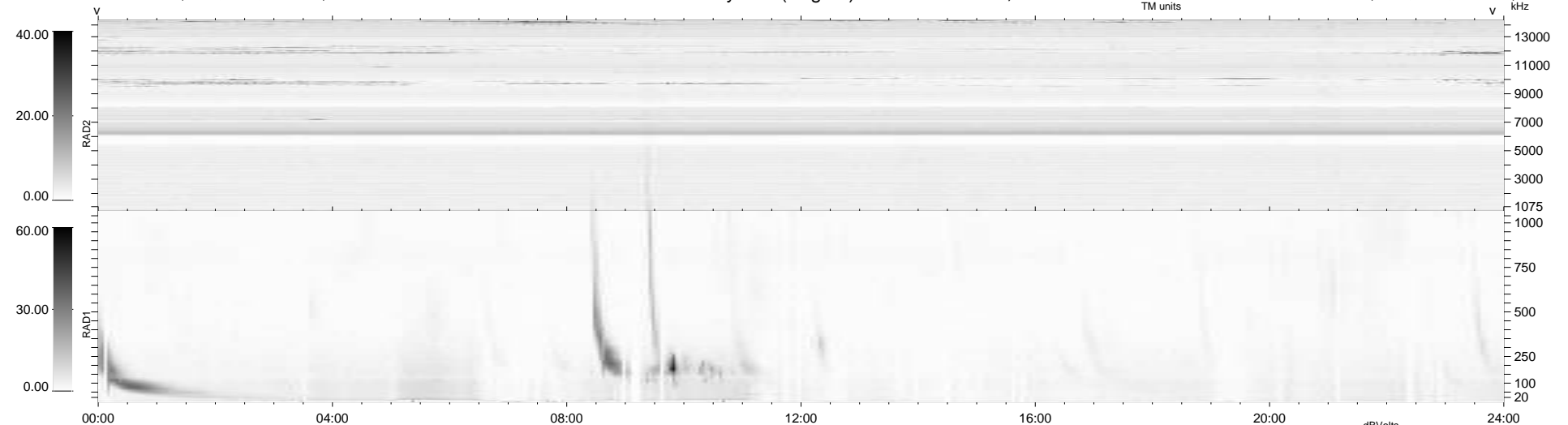
201 bad + 672 good MF/939MF projected (71%) - 66 missing MFs  
 Avg interval = 180 secs  
 Re = 256.92 (243.09, -81.96, 14.04 GSE)

windlib 2.0b

LZ version =

### WIND/WAVES Summary Plot (Page 1) for 20-APR-2016, DOY = 111

DAILY 2017-03-21 14:11:45  
 Re = 256.52 (241.96, -84.06, 13.81 GSE)



```

RAD2
Antenna Ey .....
Mode LIN(1) .....
SUM/SEP SEP .....
Toggle OFF .....

RAD1
Antenna Ex .....
Mode LIS(2,4) .....
SUM/SEP SUM .....
Toggle OFF .....

TNR
Antenna ExEy .....
Mode A-32 .....
Sweep ACE .....
  
```