

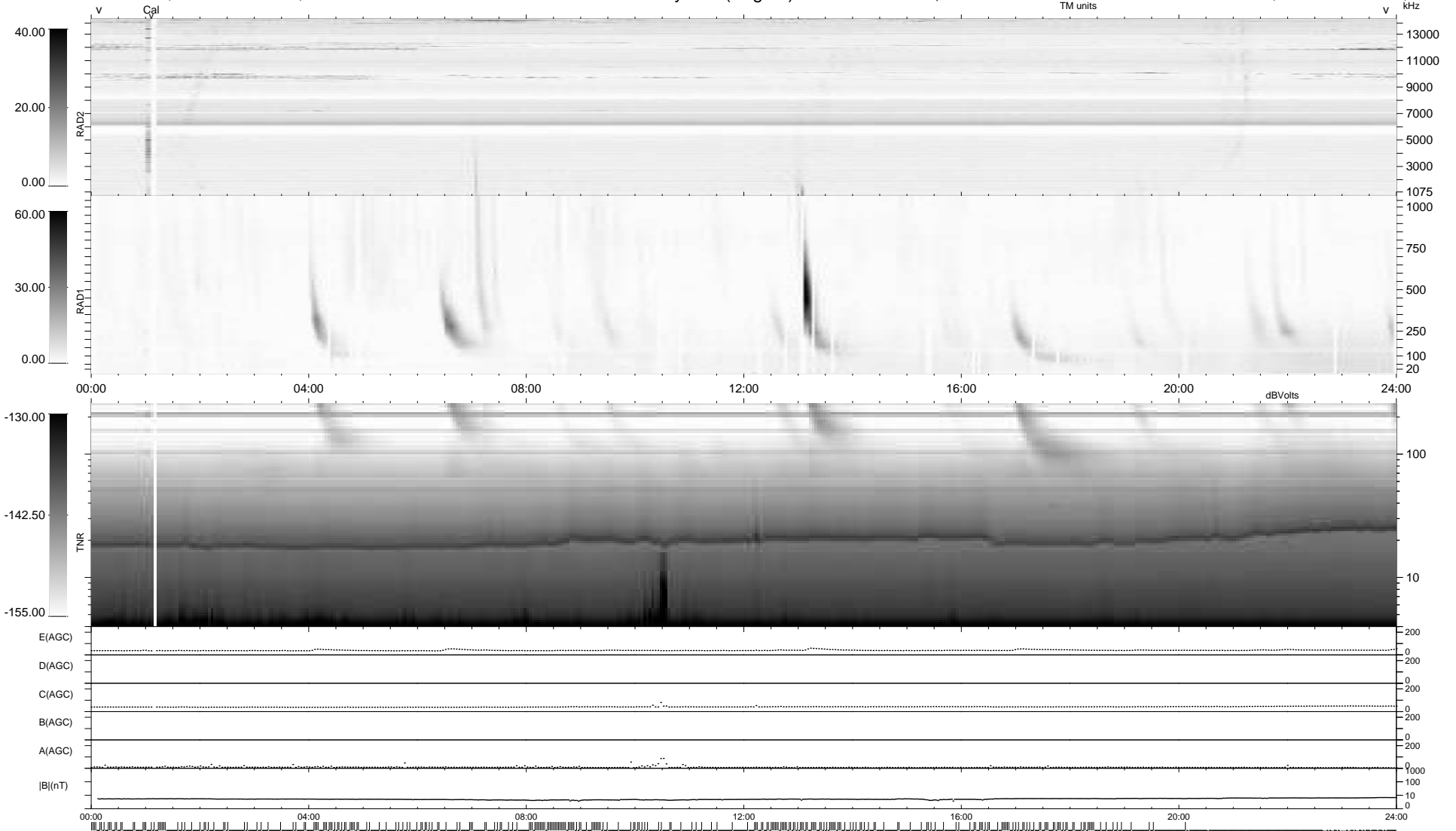
25 bad + 624 good MF/939MF projected (66%) - 290 missing MFs
Avg interval = 180 secs
Re = 257.33 (244.24, -79.78, 14.26 GSE)

windlib 2.0b

LZ version =

WIND/WAVES Summary Plot (Page 1) for 19-APR-2016, DOY = 110

DAILY 2017-03-21 14:11:08
Re = 256.93 (243.10, -81.95, 14.04 GSE)



RAD2
Antenna Ey
Mode LIN(1)
SUM/SEP SEP
Toggle OFF
RAD1
Antenna
Mode
SUM/SEP
Toggle
TNR
Antenna ExEy
Mode A-32
Sweep ACE