

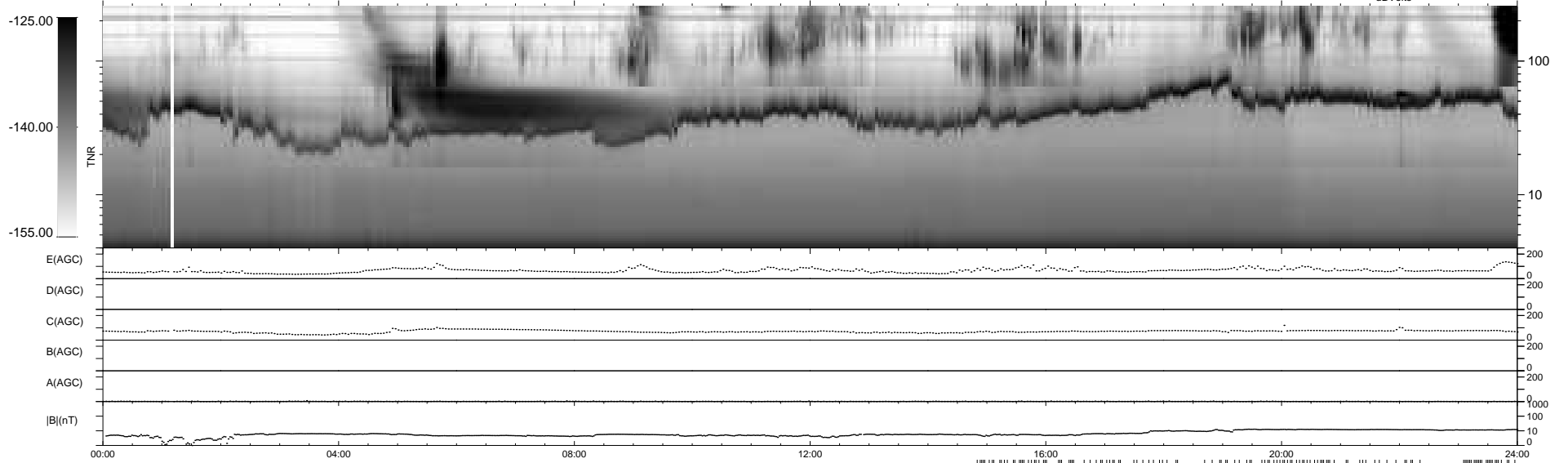
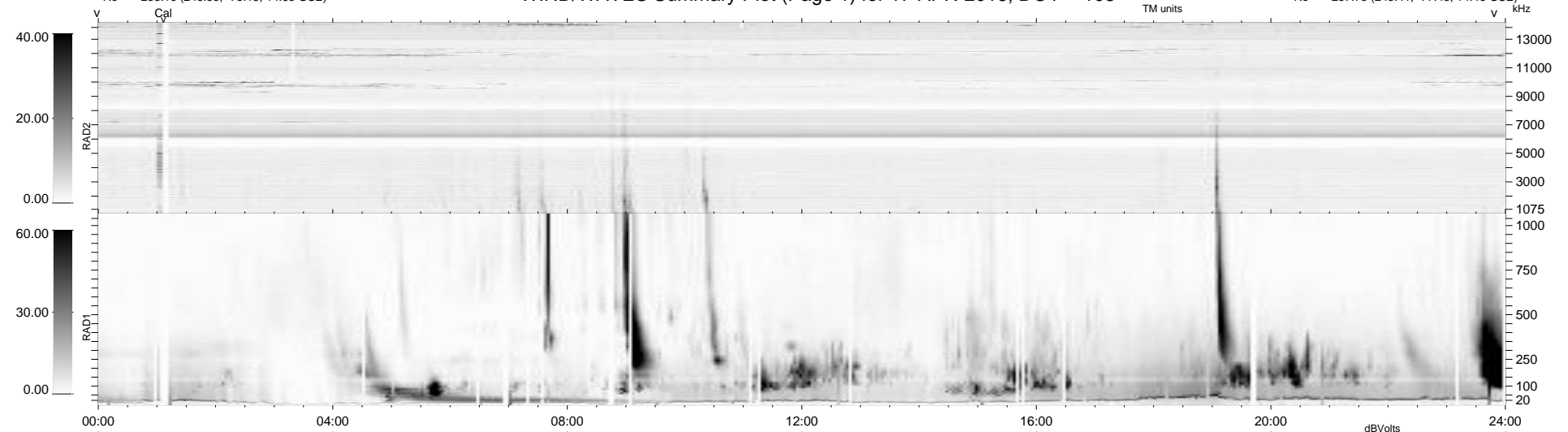
194 bad + 615 good MF/939MF projected (65%) - 130 missing MFs
 Avg interval = 180 secs
 Re = -258.16 (246.55, -75.15, 14.65 GSE)

windlib 2.0b

LZ version =

WIND/WAVES Summary Plot (Page 1) for 17-APR-2016, DOY = 108

DAILY 2017-03-21 14:10:05
 Re = 257.75 (245.41, -77.48, 14.46 GSE)



```

RAD2
Antenna Ey .....
Mode LIN(1) .....
SUM/SEP SEP .....
Toggle OFF .....

RAD1
Antenna Ex .....
Mode LIS(2,4) .....
SUM/SEP SUM .....
Toggle OFF .....

TNR
Antenna ExEy .....
Mode A-32 .....
Sweep ACE .....
  
```