

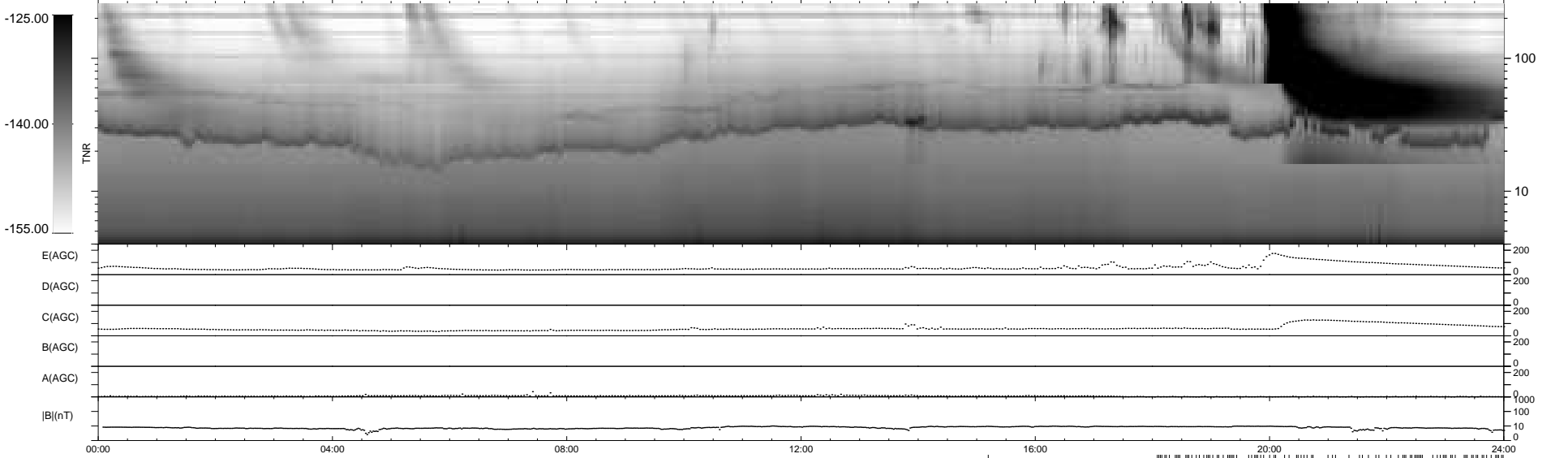
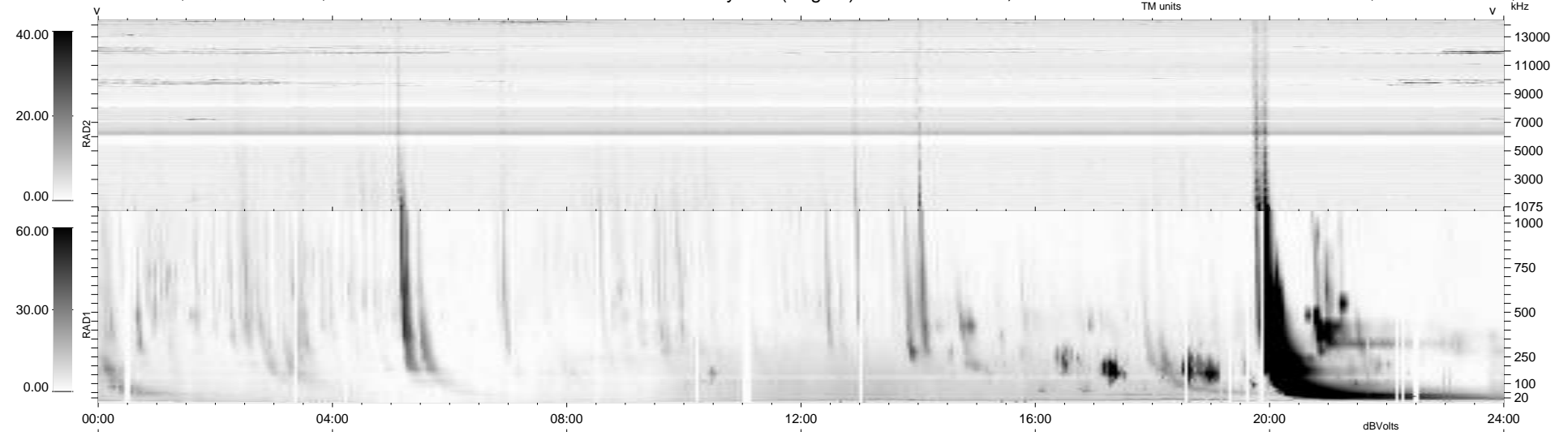
222 bad + 618 good MF/939MF projected (65%) - 99 missing MFs  
 Avg interval = 180 secs  
 Re = 258.58 (247.69, -72.75, 14.83 GSE)

windlib 2.0b

LZ version =

### WIND/WAVES Summary Plot (Page 1) for 16-APR-2016, DOY = 107

DAILY 2017-03-21 14:09:31  
 Re = 258.17 (246.56, -75.14, 14.65 GSE)



RAD2  
 Antenna Ey  
 Mode LIN(1)  
 SUM/SEP SEP  
 Toggle OFF

RAD1  
 Antenna Ex  
 Mode LIS(2/4)  
 SUM/SEP SUM  
 Toggle OFF

TNR  
 Antenna ExEy  
 Mode A-32  
 Sweep ACE