

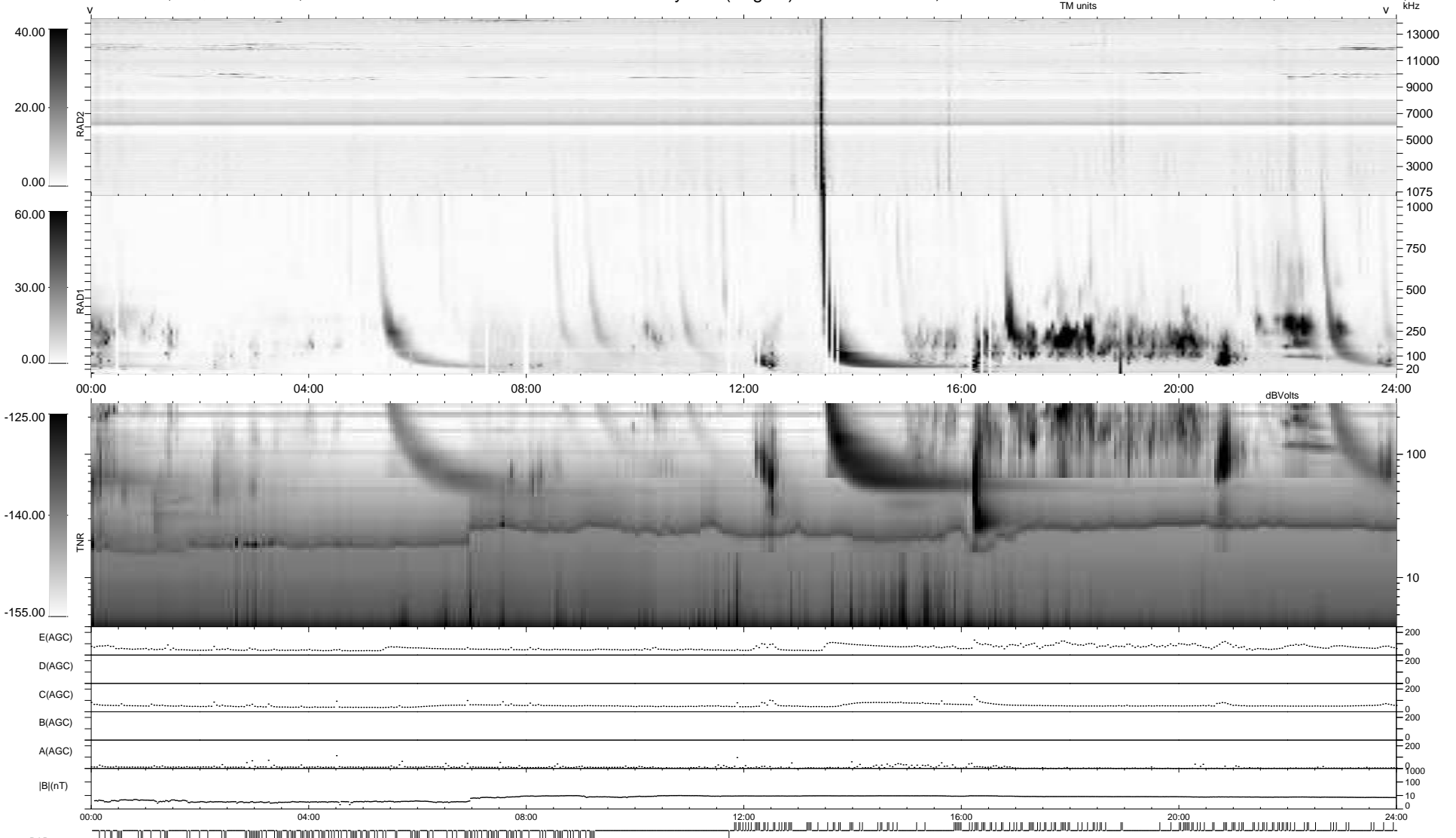
136 bad + 649 good MF/939MF projected (69%) - 154 missing MFs
 Avg interval = 180 secs
 Re = 259.39 (249.92, -67.77, 15.14 GSE)

windlib 2.0b

LZ version =

WIND/WAVES Summary Plot (Page 1) for 14-APR-2016, DOY = 105

DAILY 2017-03-21 14:08:25
 Re = 258.99 (248.83, -70.27, 14.99 GSE)



RAD2
 Antenna Ey
 Mode LIN(1)
 SUM/SEP SEP
 Toggle OFF

RAD1
 Antenna Ex
 Mode LIS(2/4)
 SUM/SEP SUM
 Toggle OFF

TNR
 Antenna ExEy
 Mode A-32
 Sweep ACE