

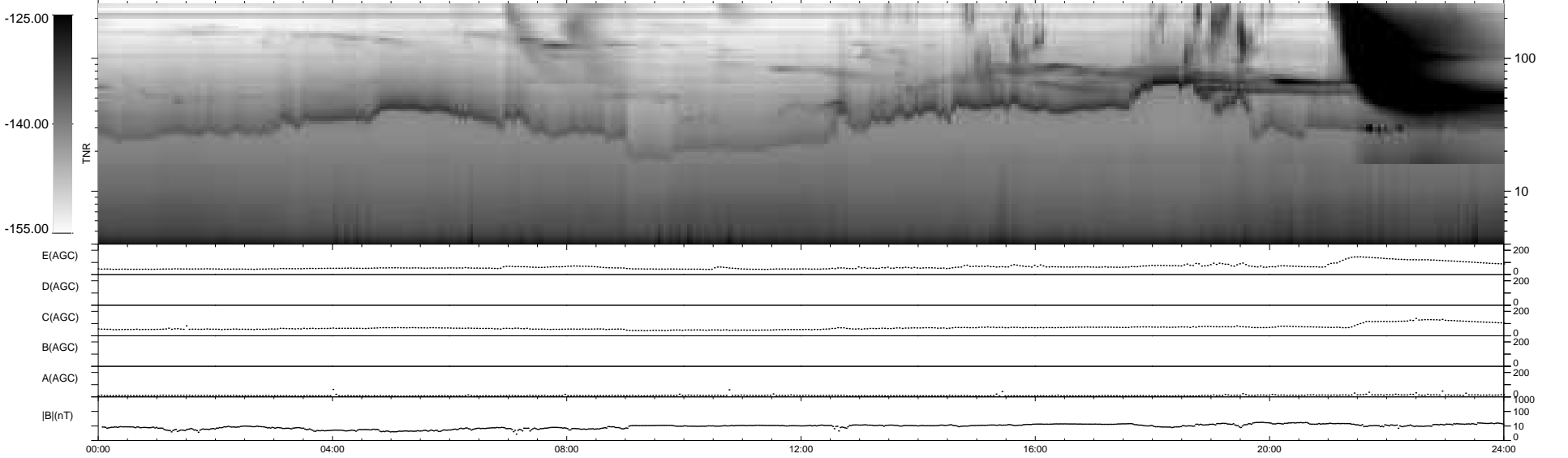
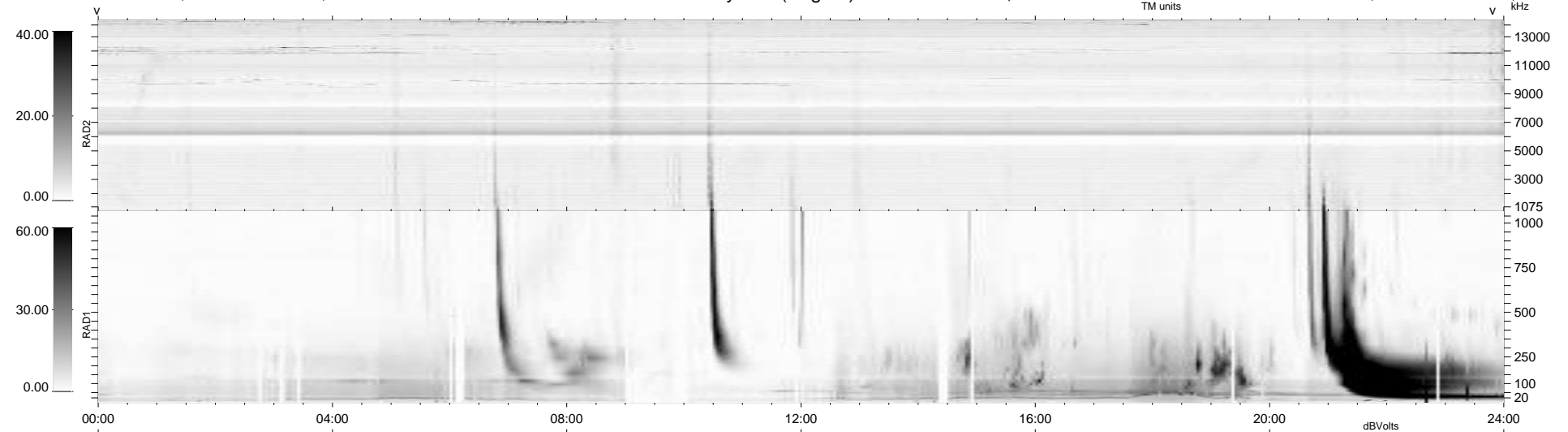
292 bad + 647 good MF/939MF projected (68%) - 0 missing MFs
 Avg interval = 180 secs
 Re = 260.15 (252.03, -62.60, 15.41 GSE)

windlib 2.0b

LZ version =

WIND/WAVES Summary Plot (Page 1) for 12-APR-2016, DOY = 103

DAILY 2017-03-21 14:07:19
 Re = 259.78 (251.01, -65.19, 15.28 GSE)



```

RAD2
Antenna  Ey .....
Mode     LIN(1) .....
SUM/SEP  SEP .....
Toggle   OFF .....

RAD1
Antenna  Ex .....
Mode     LIS(2,4) .....
SUM/SEP  SUM .....
Toggle   OFF .....

TNR
Antenna  ExEy .....
Mode     A-32 .....
Sweep    ACE .....
  
```