

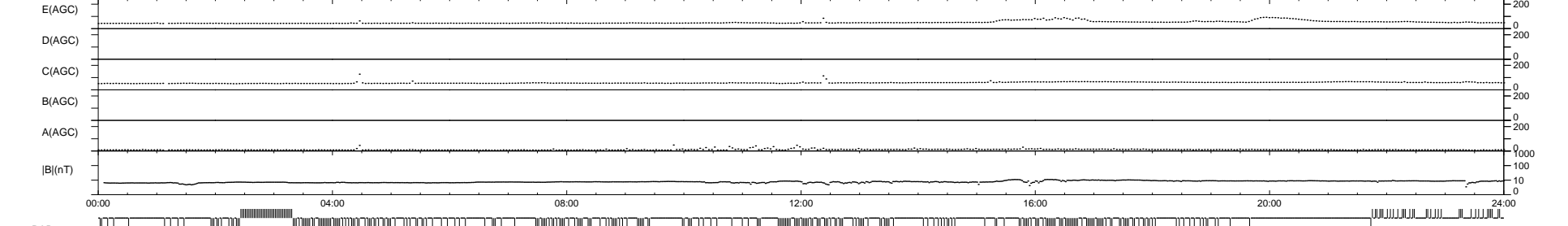
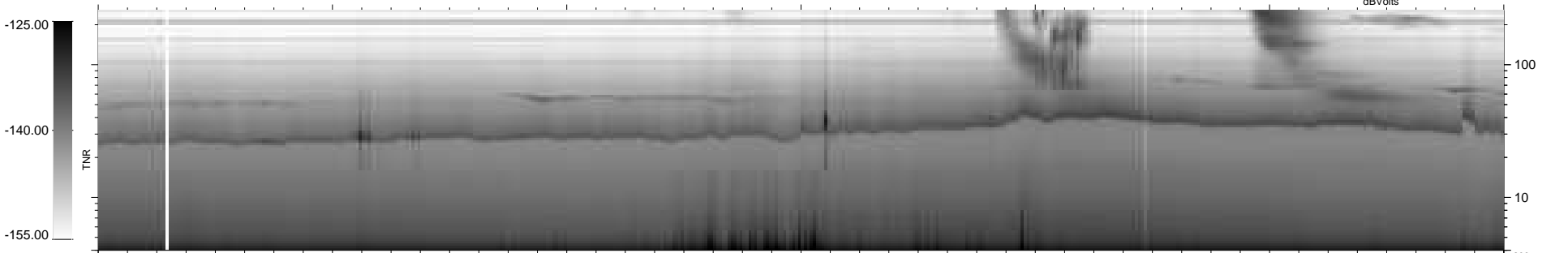
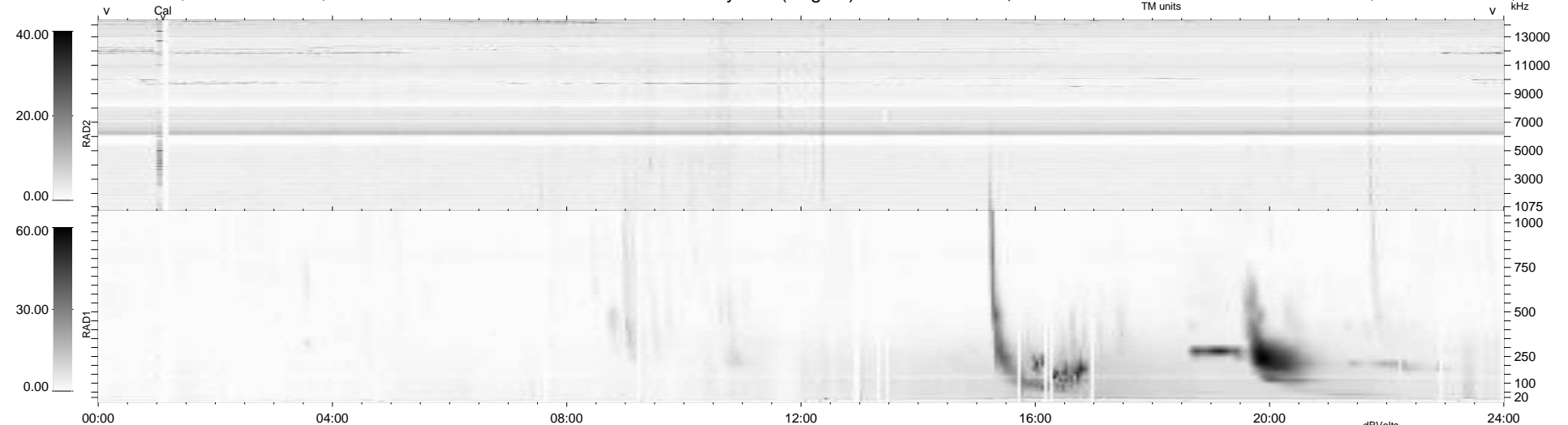
278 bad + 591 good MF/939MF projected (62%) - 70 missing MFs
 Avg interval = 180 secs
 Re = 260.48 (253.01, -59.97, 15.53 GSE)

windlib 2.0b

LZ version =

WIND/WAVES Summary Plot (Page 1) for 11-APR-2016, DOY = 102

DAILY 2017-03-21 14:06:51
 Re = 260.15 (252.04, -62.59, 15.41 GSE)



RAD2
 Antenna Ey
 Mode LIN(1)
 SUM/SEP SEP
 Toggle OFF
 RAD1
 Antenna Ex
 Mode LIS(2/4)
 SUM/SEP SUM
 Toggle OFF
 TNR
 Antenna ExEy
 Mode A-32
 Sweep ACE