

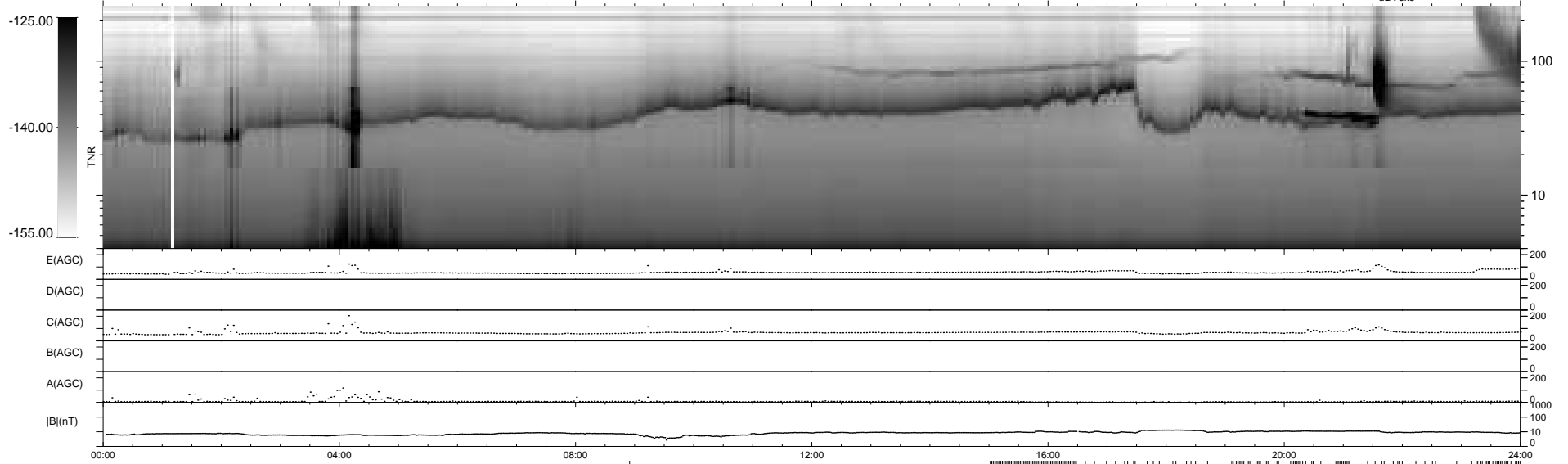
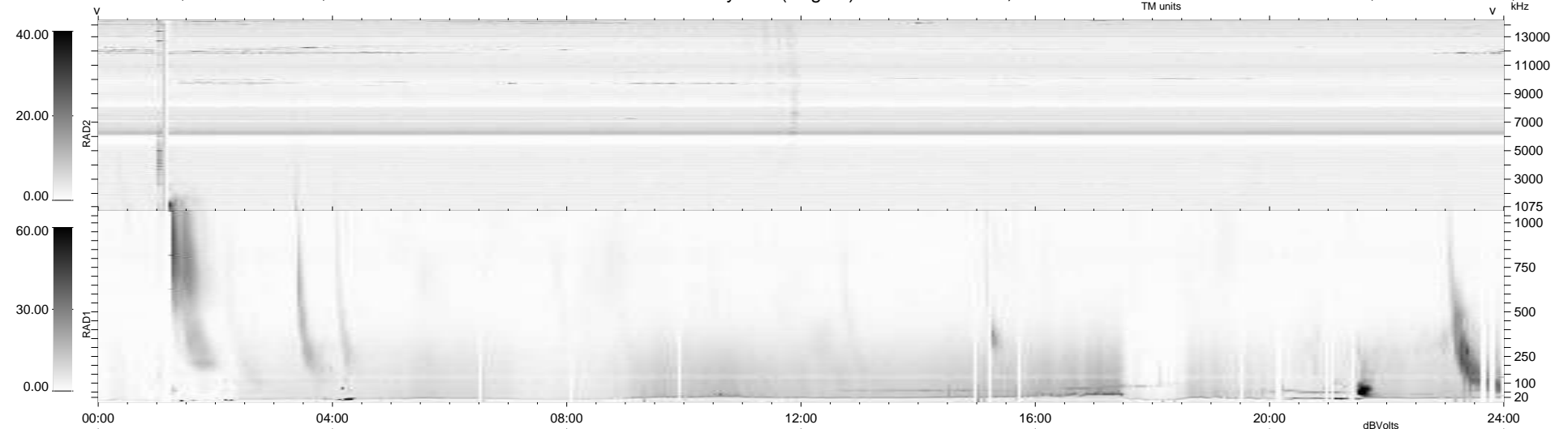
190 bad + 594 good MF/939MF projected (63%) - 155 missing MFs
 Avg interval = 180 secs
 Re = 261.38 (256.27, -48.88, 15.88 GSE)

windlib 2.0b

LZ version =

WIND/WAVES Summary Plot (Page 1) for 07-APR-2016, DOY = 98

DAILY 2017-03-21 14:04:38
 Re = 261.24 (255.58, -51.71, 15.81 GSE)



00:00 04:00 08:00 12:00 16:00 20:00 24:00

RAD2
 Antenna Ey
 Mode LIN(1)
 SUM/SEP SEP
 Toggle OFF
 RAD1
 Antenna Ex
 Mode LIS(2,4)
 SUM/SEP SUM
 Toggle OFF
 TNR
 Antenna ExEy
 Mode A-32
 Sweep ACE