

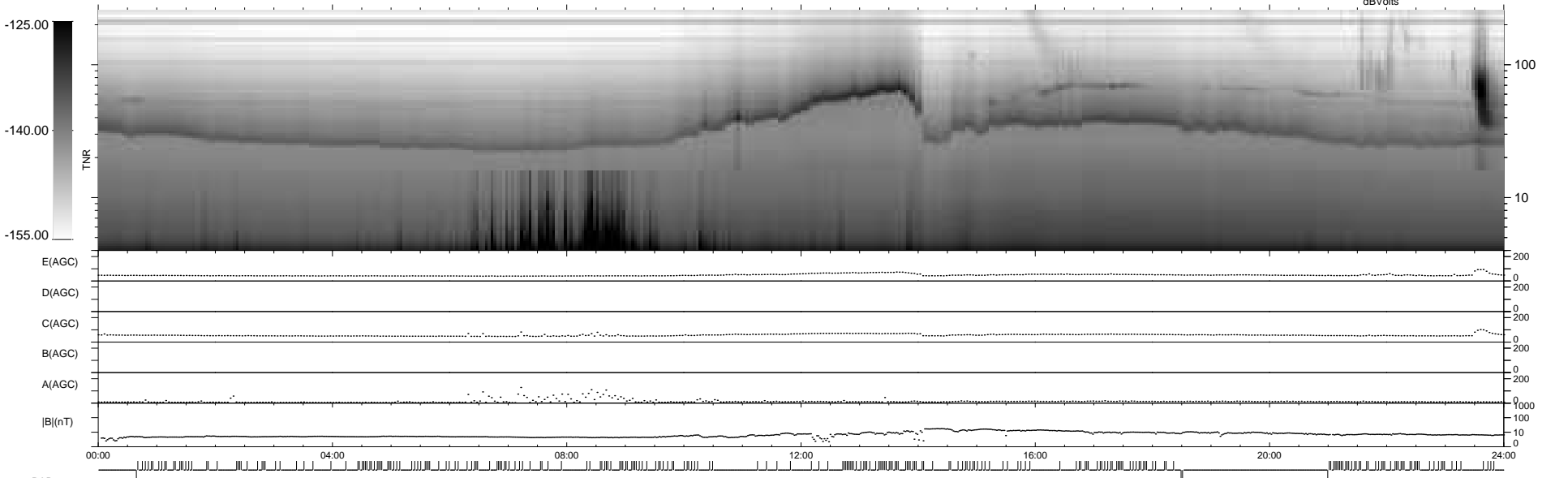
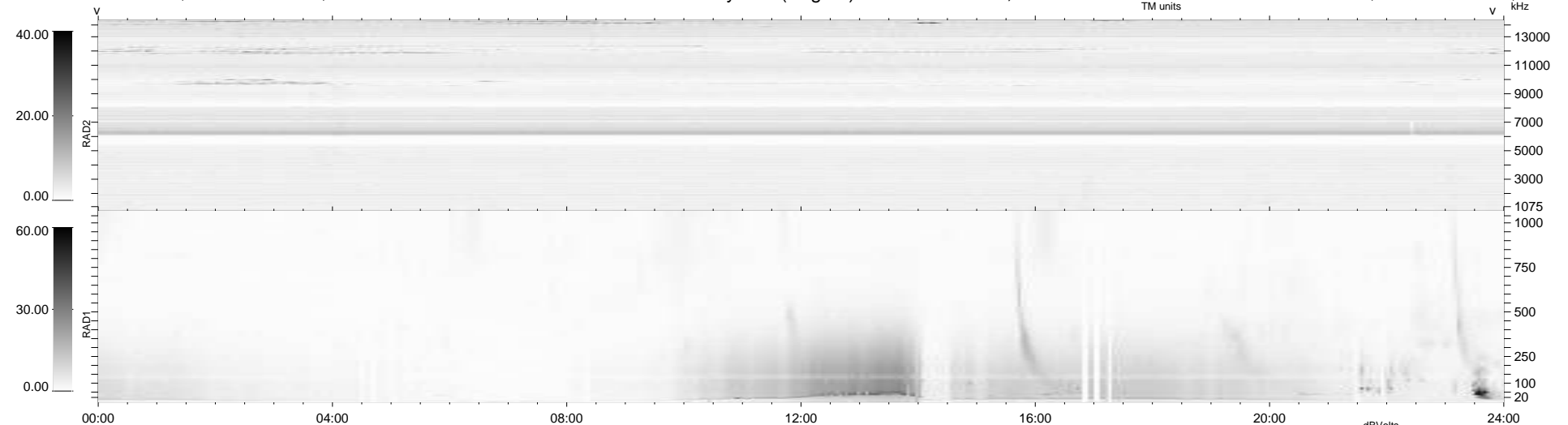
4 bad + 665 good MF/939MF projected (70%) - 270 missing MFs
 Avg interval = 180 secs
 Re = 261.30 (258.63, -33.61, 16.00 GSE)

windlib 2.0b

LZ version =

WIND/WAVES Summary Plot (Page 1) for 02-APR-2016, DOY = 93

DAILY 2017-03-21 13:59:44
 Re = 261.40 (258.31, -36.79, 16.01 GSE)



RAD2
 Antenna Ey
 Mode LIN(1)
 SUM/SEP SEP
 Toggle OFF
 RAD1
 Antenna Ex
 Mode LIS(2,4)
 SUM/SEP SUM
 Toggle OFF
 TNR
 Antenna ExEy
 Mode A-32
 Sweep ACE