

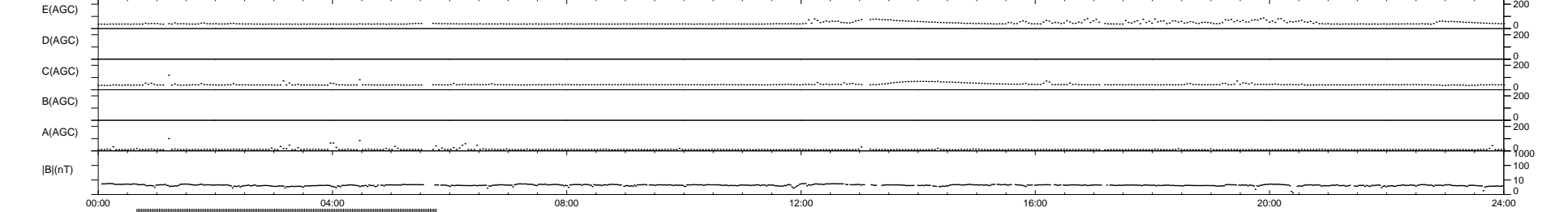
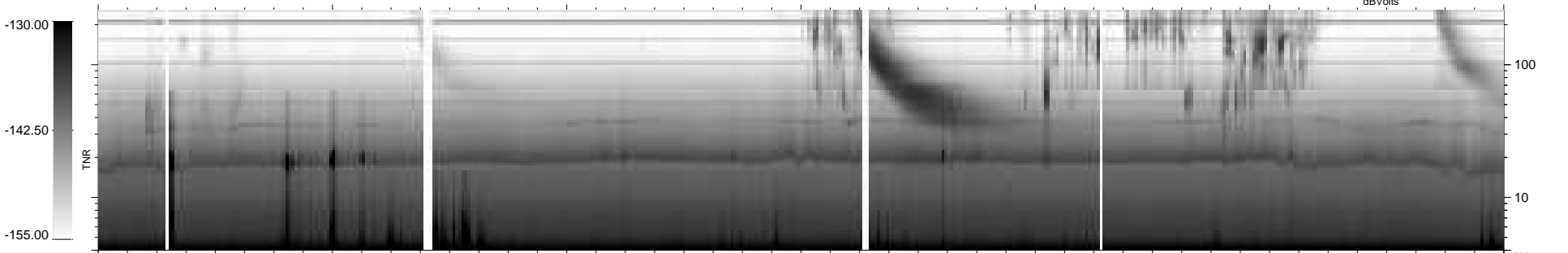
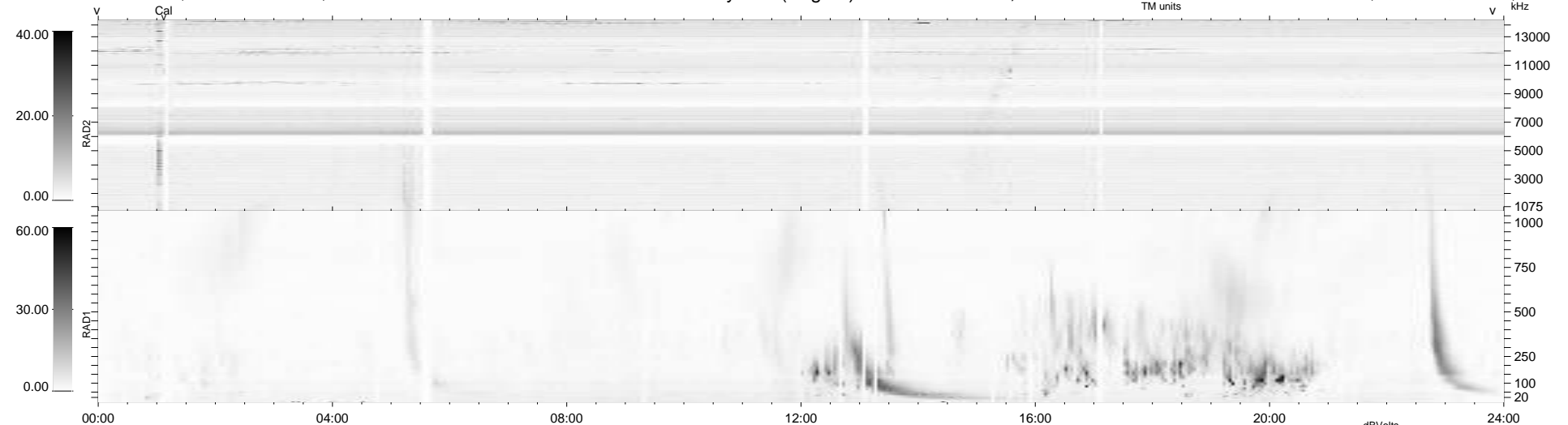
30 bad + 708 good MF/939MF projected (75%) - 201 missing MFs
 Avg interval = 180 secs
 Re = 260.85 (259.30, -23.60, 15.86 GSE)

windlib 2.0b

LZ version =

WIND/WAVES Summary Plot (Page 1) for 30-MAR-2016, DOY = 90

DAILY 2017-03-21 13:57:33
 Re = 261.01 (259.13, -26.98, 15.92 GSE)



```

RAD2
Antenna Ey .....
Mode LIN(1) .....
SUM/SEP SEP .....
Toggle OFF .....

RAD1
Antenna Ex .....
Mode LIS(2,4) .....
SUM/SEP SUM .....
Toggle OFF .....

TNR
Antenna ExEy .....
Mode A-32 .....
Sweep ACE .....
  
```