

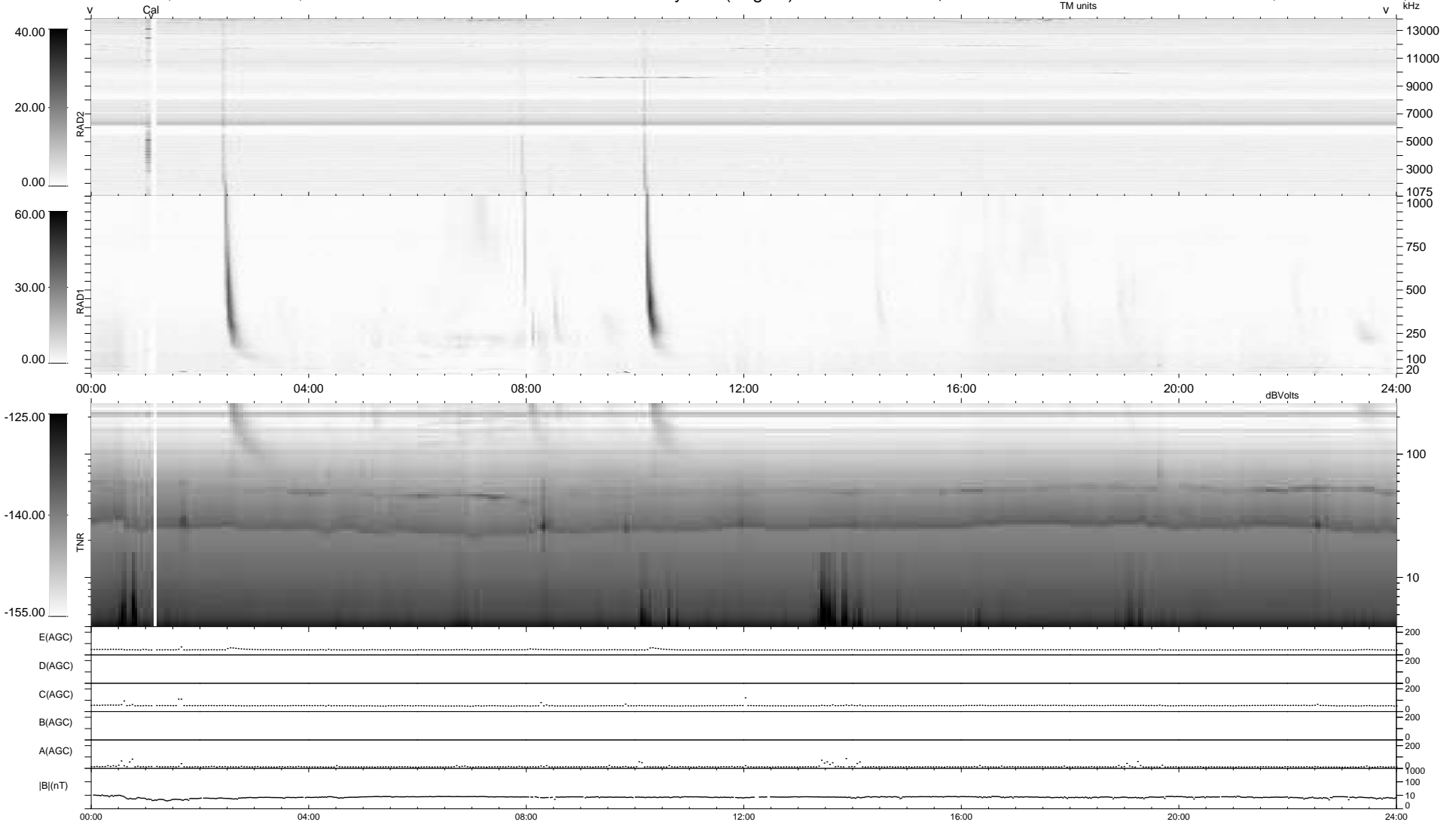
21 bad + 918 good MF/939MF projected (97%) - 0 missing MFs  
 Avg interval = 180 secs  
 Re = 260.53 (259.52, -16.63, 15.67 GSE)

windlib 2.0b

LZ version =

### WIND/WAVES Summary Plot (Page 1) for 28-MAR-2016, DOY = 88

DAILY 2017-03-21 13:56:27  
 Re = 260.69 (259.43, -20.11, 15.78 GSE)



```

RAD2
Antenna Ey .....
Mode LIN(1) .....
SUM/SEP SEP .....
Toggle OFF .....

RAD1
Antenna Ex .....
Mode LIS(2/4) .....
SUM/SEP SUM .....
Toggle OFF .....

TNR
Antenna ExEy .....
Mode A-32 .....
Sweep ACE .....
  
```