

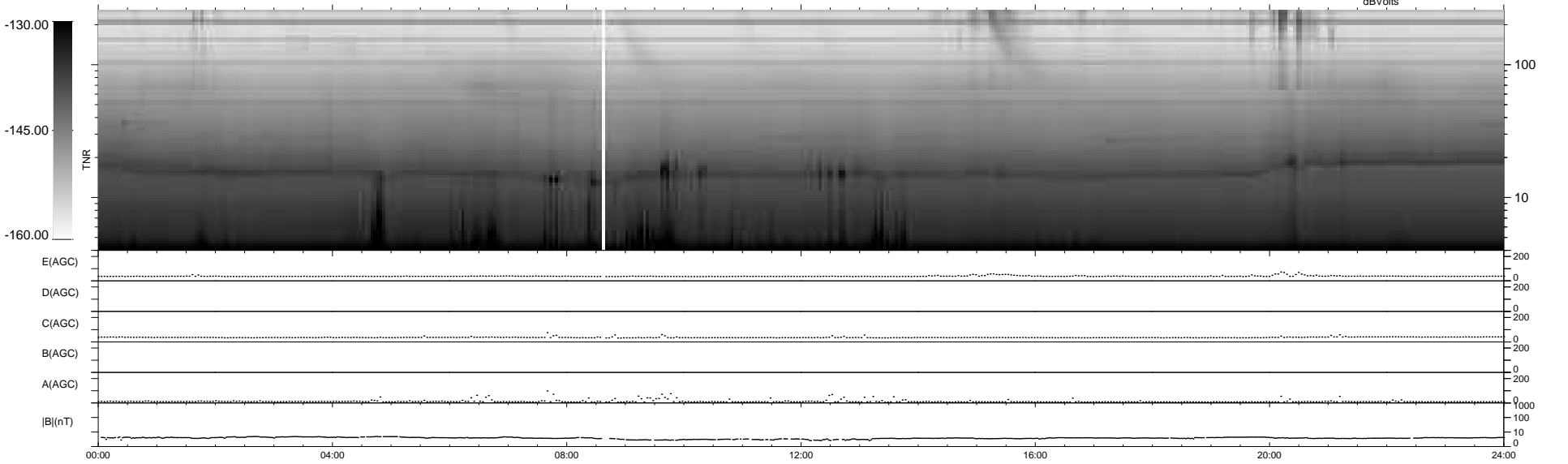
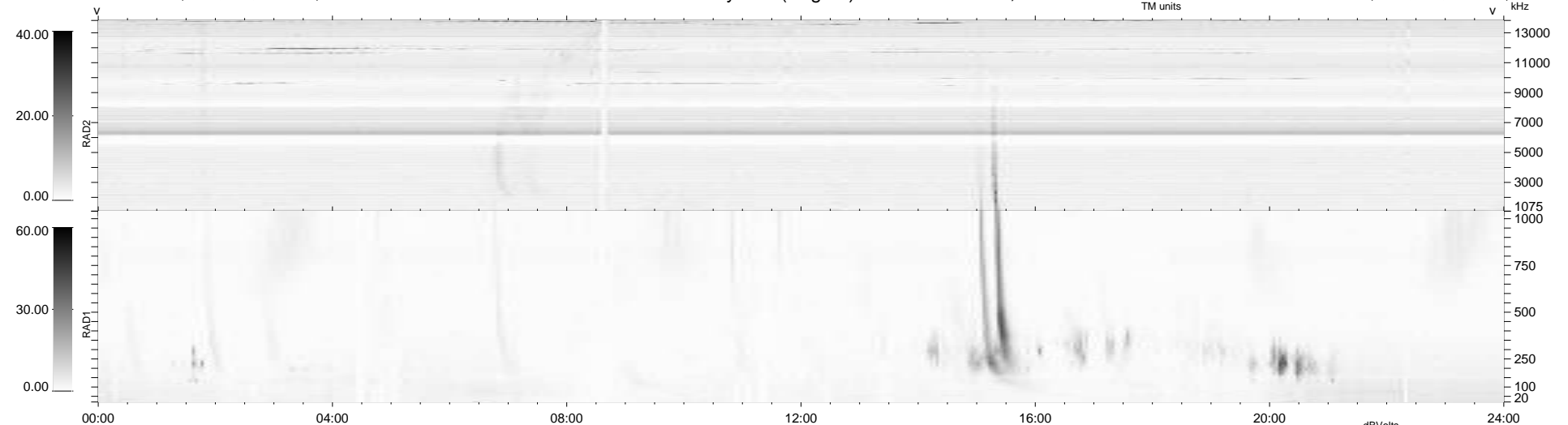
38 bad + 901 good MF/939MF projected (95%) - 0 missing MFs  
 Avg interval = 180 secs  
 Re = 260.12 (259.61, -5.88, 15.26 GSE)

windlib 2.0b

LZ version = v02

### WIND/WAVES Summary Plot (Page 1) for 25-MAR-2016, DOY = 85

DAILY 2017-10-10 08:20:13  
 Re = 260.24 (259.61, -9.46, 15.42 GSE)



```

RAD2
Antenna Ey .....
Mode LIN(1) .....
SUM/SEP SEP .....
Toggle OFF .....

RAD1
Antenna Ex .....
Mode LIS(2,4) .....
SUM/SEP SUM .....
Toggle OFF .....

TNR
Antenna ExEy .....
Mode A-32 .....
Sweep ACE .....
  
```