

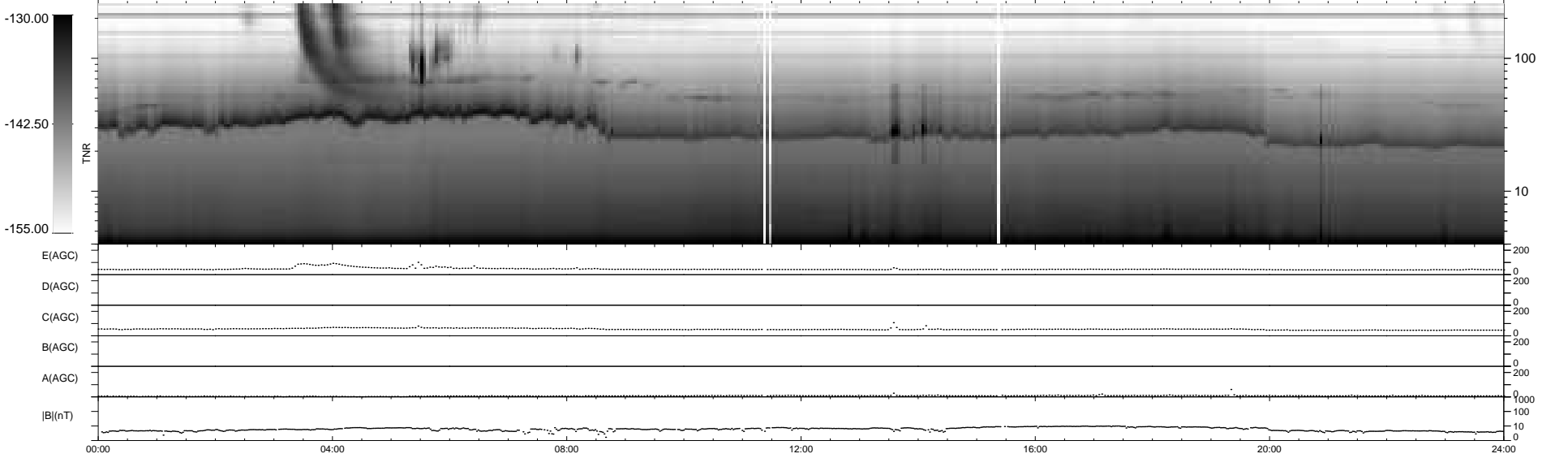
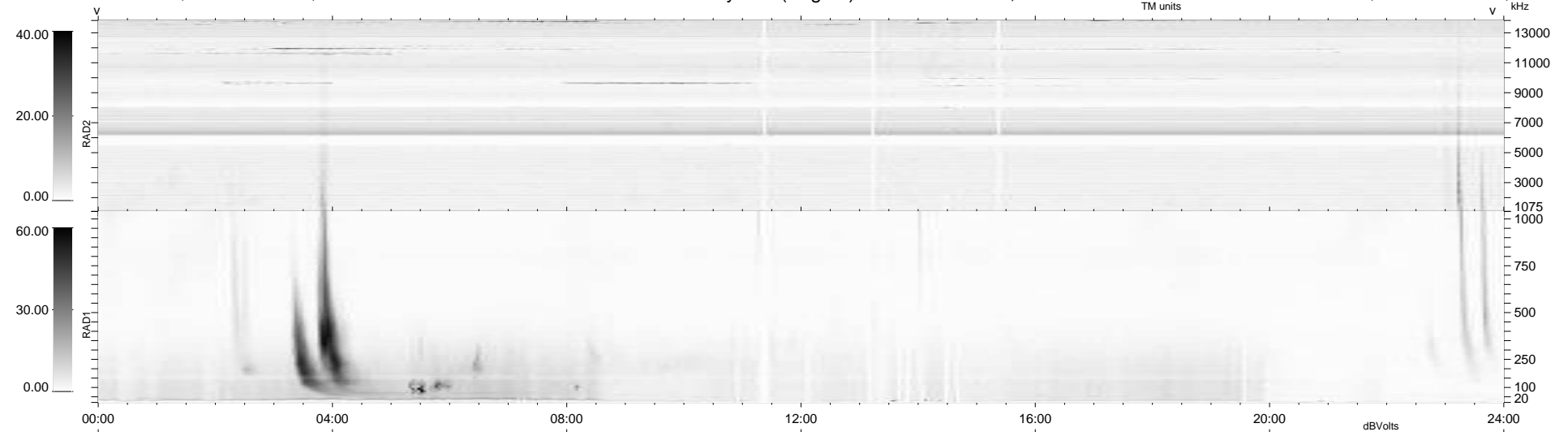
40 bad + 899 good MF/939MF projected (95%) - 0 missing MFs  
 Avg interval = 180 secs  
 Re = 259.96 (259.52, 1.38, 14.91 GSE)

windlib 2.0b

LZ version = v01

### WIND/WAVES Summary Plot (Page 1) for 23-MAR-2016, DOY = 83

DAILY 2017-10-10 08:19:08  
 Re = 260.03 (259.58, -2.23, 15.09 GSE)



RAD2  
 Antenna Ey  
 Mode LIN(1)  
 SUM/SEP SEP  
 Toggle OFF

RAD1  
 Antenna Ex  
 Mode LIS(2,4)  
 SUM/SEP SUM  
 Toggle OFF

TNR  
 Antenna ExEy  
 Mode A-32  
 Sweep ACE