

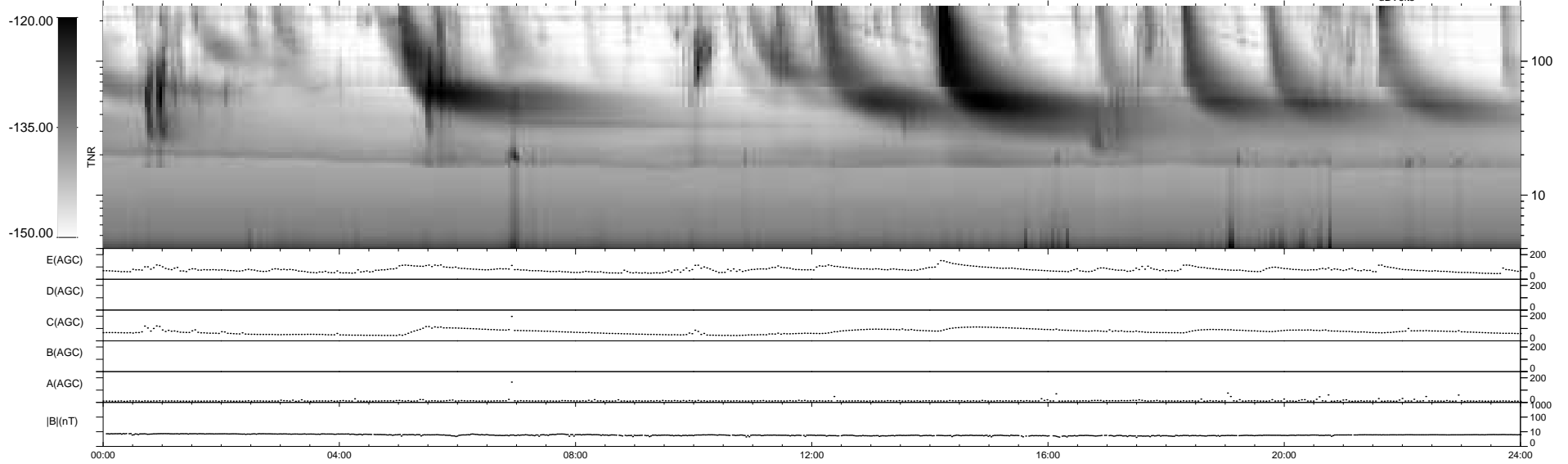
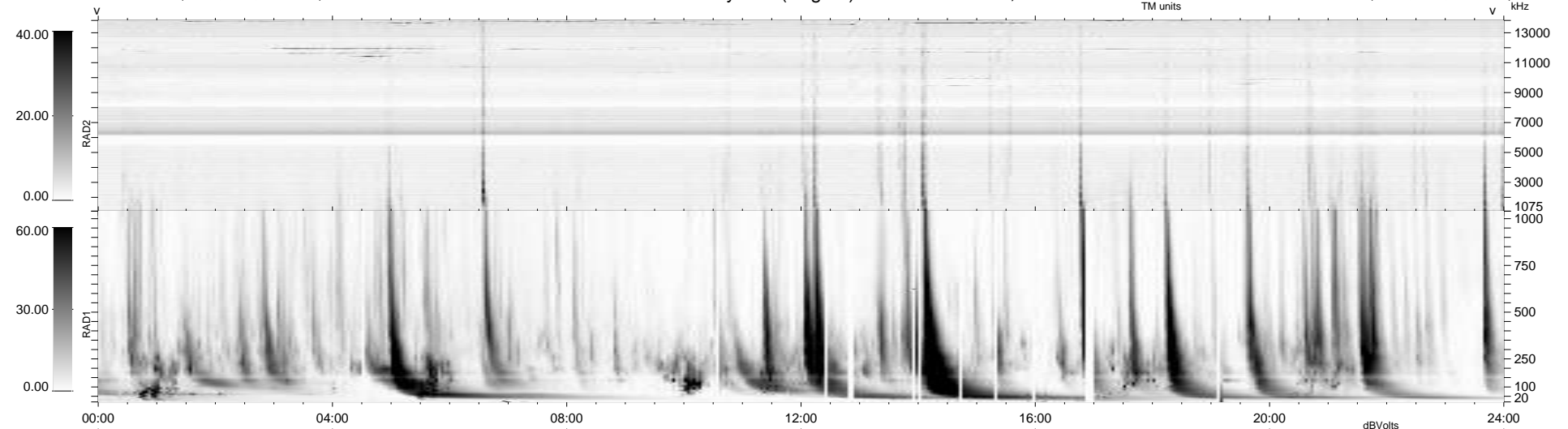
32 bad + 907 good MF/939MF projected (96%) - 0 missing MFs  
 Avg interval = 180 secs  
 Re = 259.94 (258.59, 22.75, 13.51 GSE)

windlib 2.0b

LZ version = v01

### WIND/WAVES Summary Plot (Page 1) for 17-MAR-2016, DOY = 77

DAILY 2016-03-23 22:53:05  
 Re = 259.91 (258.83, 19.31, 13.77 GSE)



RAD2  
 Antenna Ey  
 Mode LIN(1)  
 SUM/SEP SEP  
 Toggle OFF

RAD1  
 Antenna Ex  
 Mode LIS(2,4)  
 SUM/SEP SUM  
 Toggle OFF

TNR  
 Antenna ExEy  
 Mode A-32  
 Sweep ACE