

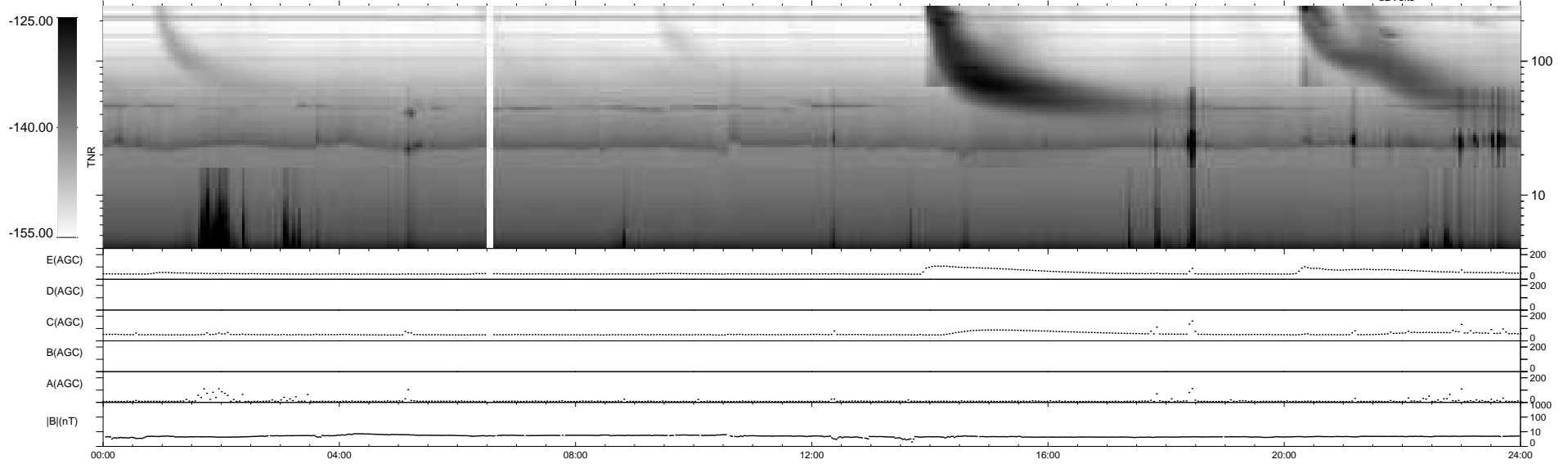
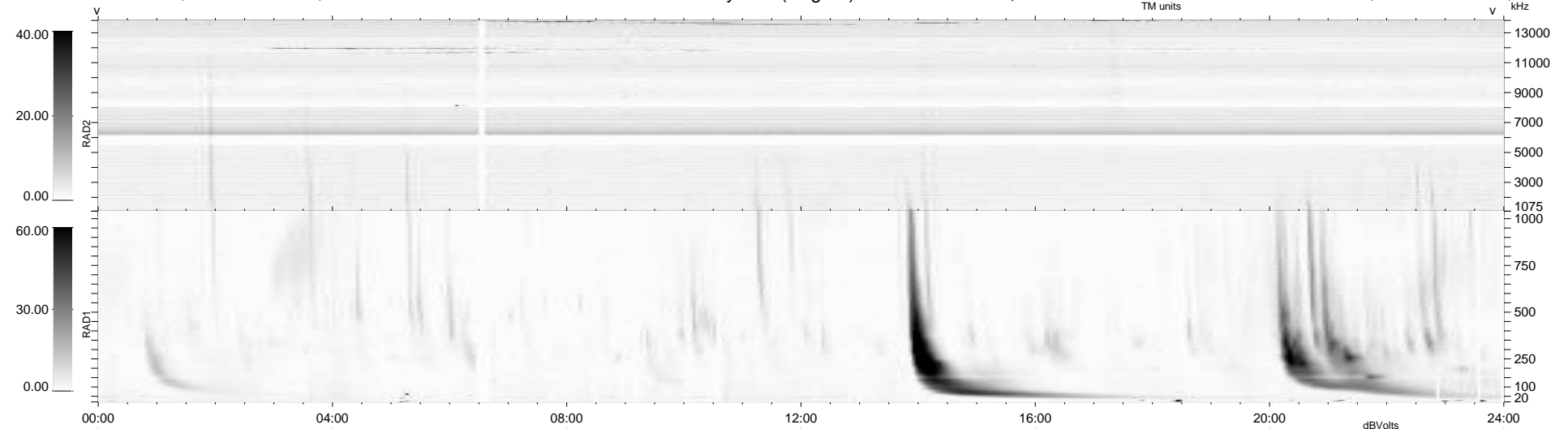
43 bad + 897 good MF/940MF projected (95%) - 0 missing MFs
Avg interval = 180 secs
Re = 259.93 (257.13, 35.97, 12.37 GSE)

windlib 2.0b

LZ version = v02

WIND/WAVES Summary Plot (Page 1) for 13-MAR-2016, DOY = 73

DAILY 2016-03-15 11:52:05
Re = 259.97 (257.58, 32.79, 12.67 GSE)



RAD2
Antenna Ey
Mode LIN(1)
SUM/SEP SEP
Toggle OFF

RAD1
Antenna Ex
Mode LIS(2,4)
SUM/SEP SUM
Toggle OFF

TNR
Antenna ExEy
Mode A-32
Sweep ACE