

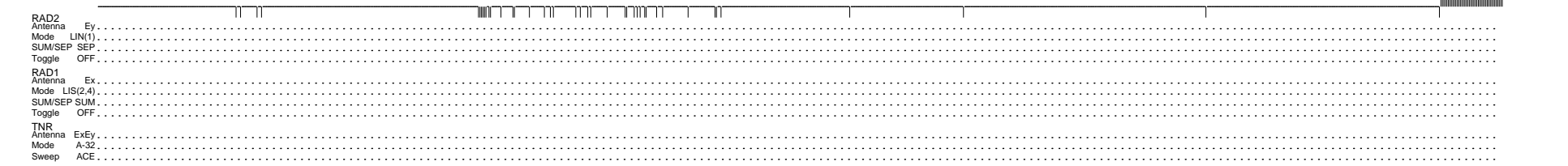
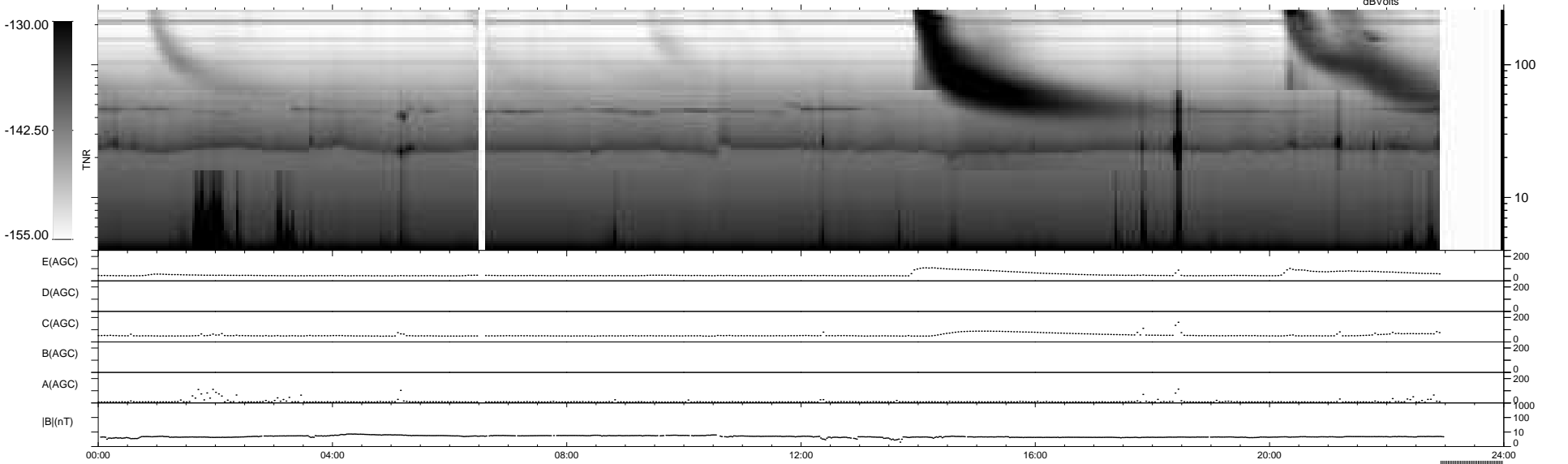
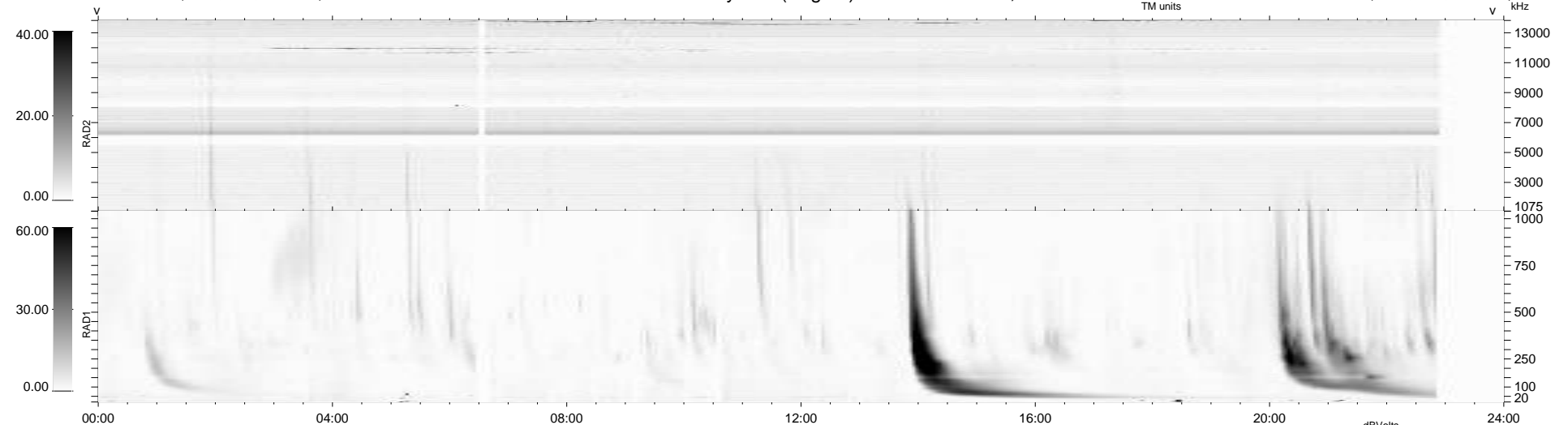
41 bad + 856 good MF/939MF projected (91%) - 42 missing MFs
 Avg interval = 180 secs
 Re = 259.93 (257.13, 35.97, 12.37 GSE)

windlib 2.0b

LZ version = v01

WIND/WAVES Summary Plot (Page 1) for 13-MAR-2016, DOY = 73

DAILY 2016-03-15 03:52:04
 Re = 259.97 (257.58, 32.79, 12.67 GSE)



```

RAD2
Antenna Ey .....
Mode LIN(1) .....
SUM/SEP SEP .....
Toggle OFF .....

RAD1
Antenna Ex .....
Mode LIS(2,4) .....
SUM/SEP SUM .....
Toggle OFF .....

TNR
Antenna ExEy .....
Mode A-32 .....
Sweep ACE .....
  
```