

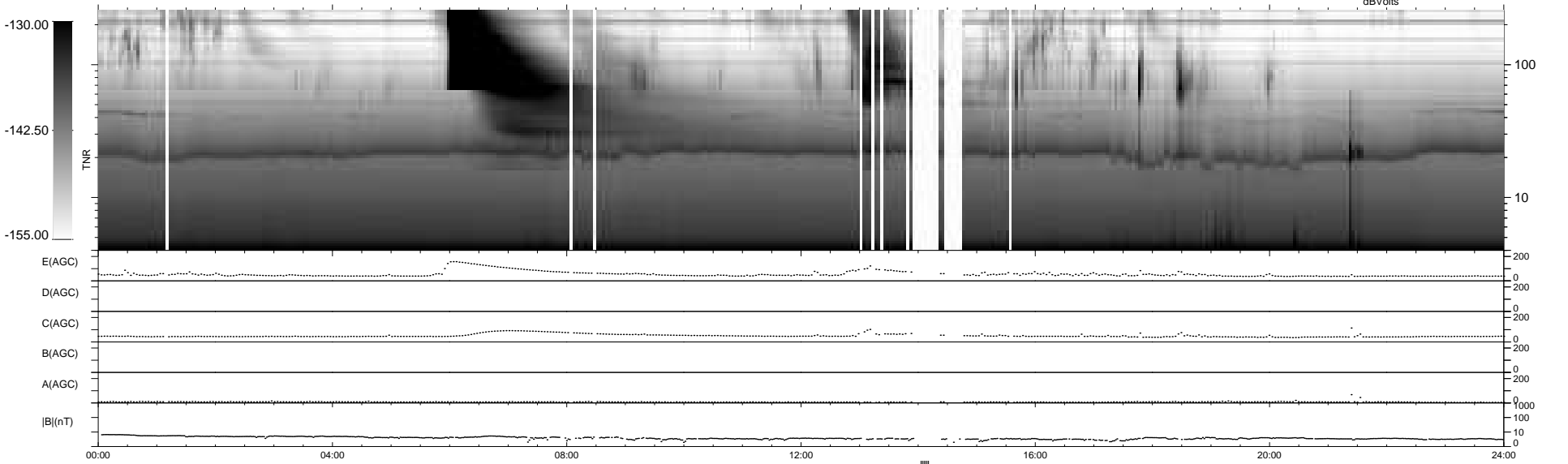
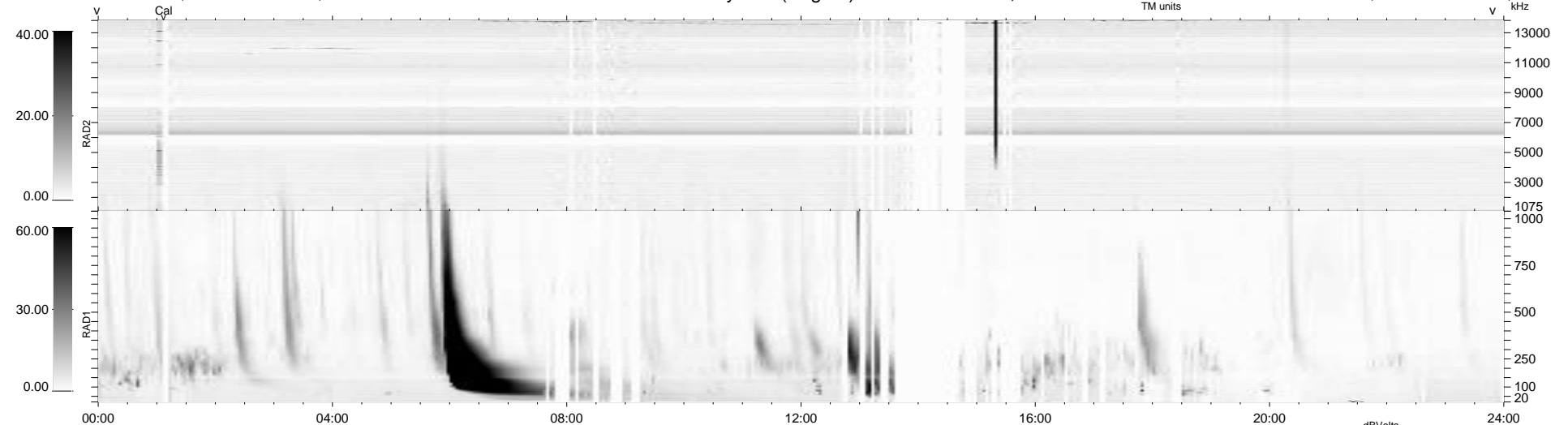
94 bad + 839 good MF/939MF projected (89%) - 6 missing MFs  
 Avg interval = 180 secs  
 Re = 259.00 (253.71, 50.94, 10.74 GSE)

windlib 2.0b

LZ version = v02

### WIND/WAVES Summary Plot (Page 1) for 08-MAR-2016, DOY = 68

DAILY 2016-03-10 12:52:05  
 Re = 259.29 (254.55, 48.09, 11.08 GSE)



```

RAD2
Antenna Ey .....
Mode LIN(1) .....
SUM/SEP SEP .....
Toggle OFF .....

RAD1
Antenna Ex .....
Mode LIS(2/4) .....
SUM/SEP SUM .....
Toggle OFF .....

TNR
Antenna ExEy .....
Mode A-32 .....
Sweep ACE .....
  
```