

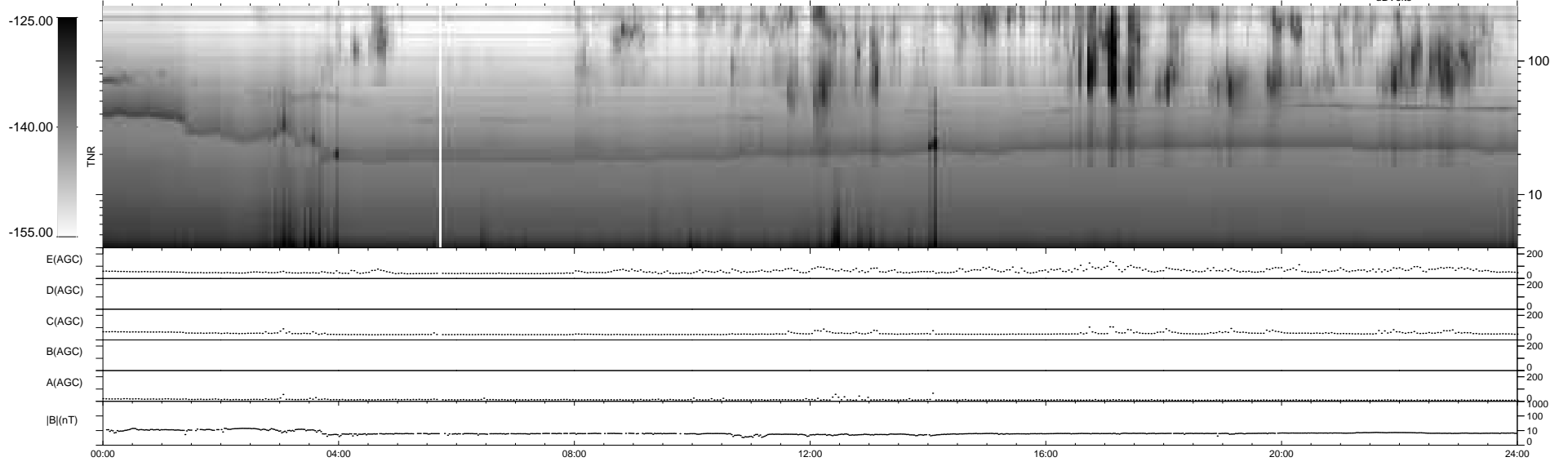
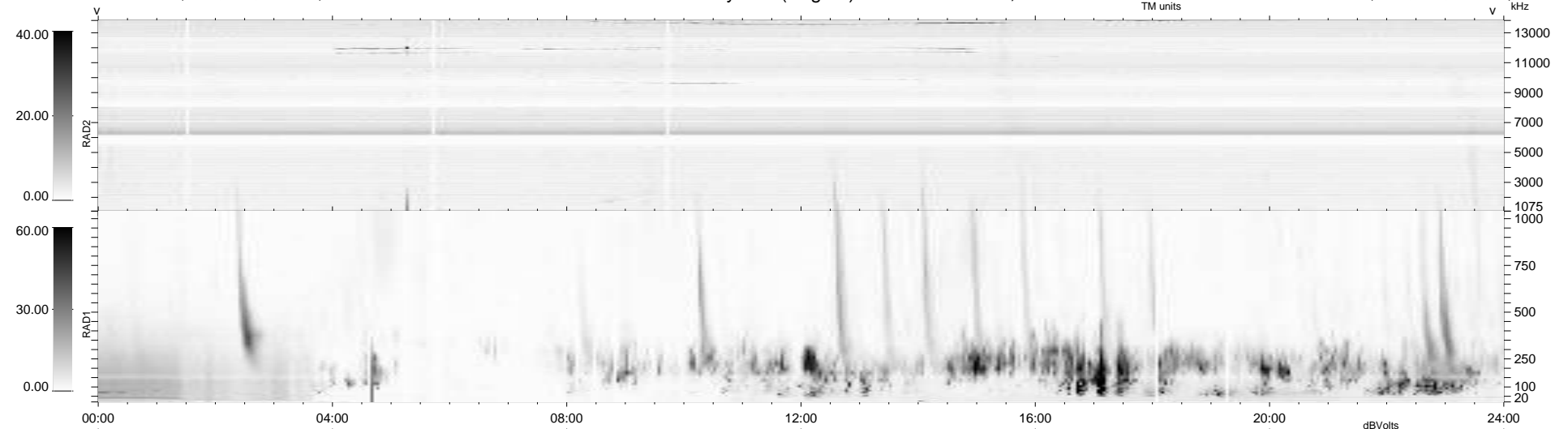
41 bad + 898 good MF/939MF projected (95%) - 0 missing MFs
 Avg interval = 180 secs
 Re = -258.65 (252.79, 53.75, 10.38 GSE)

windlib 2.0b

LZ version = v01

WIND/WAVES Summary Plot (Page 1) for 07-MAR-2016, DOY = 67

DAILY 2016-03-09 02:52:04
 Re = 259.00 (253.71, 50.96, 10.73 GSE)



RAD2
 Antenna Ey
 Mode LIN(1)
 SUM/SEP SEP
 Toggle OFF
 RAD1
 Antenna Ex
 Mode LIS(2,4)
 SUM/SEP SUM
 Toggle OFF
 TNR
 Antenna ExEy
 Mode A-32
 Sweep ACE