

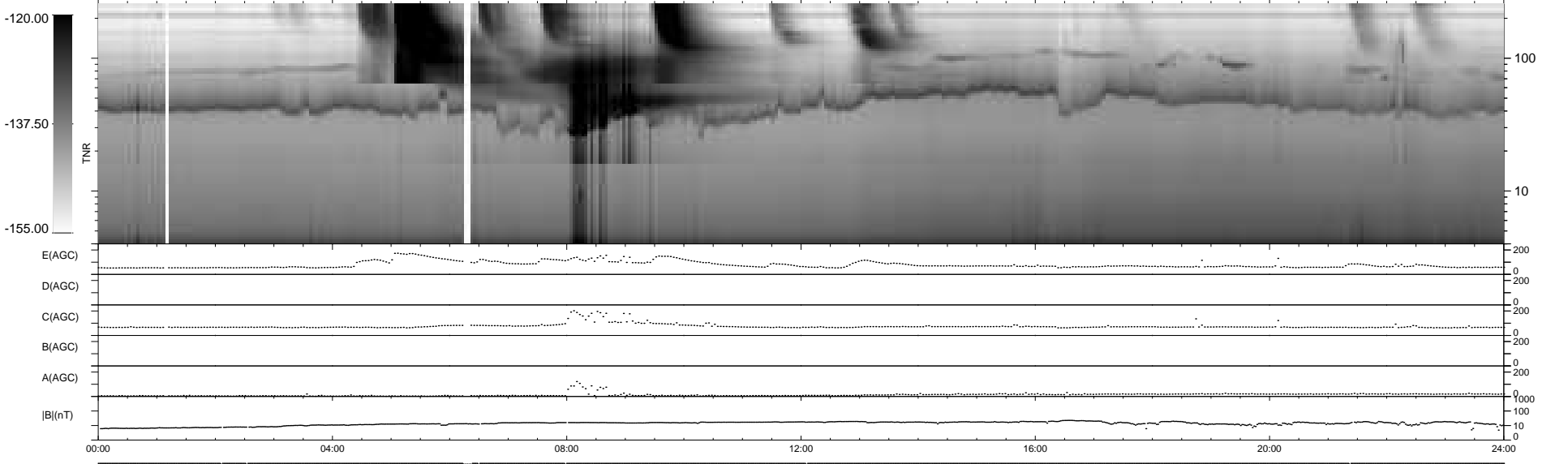
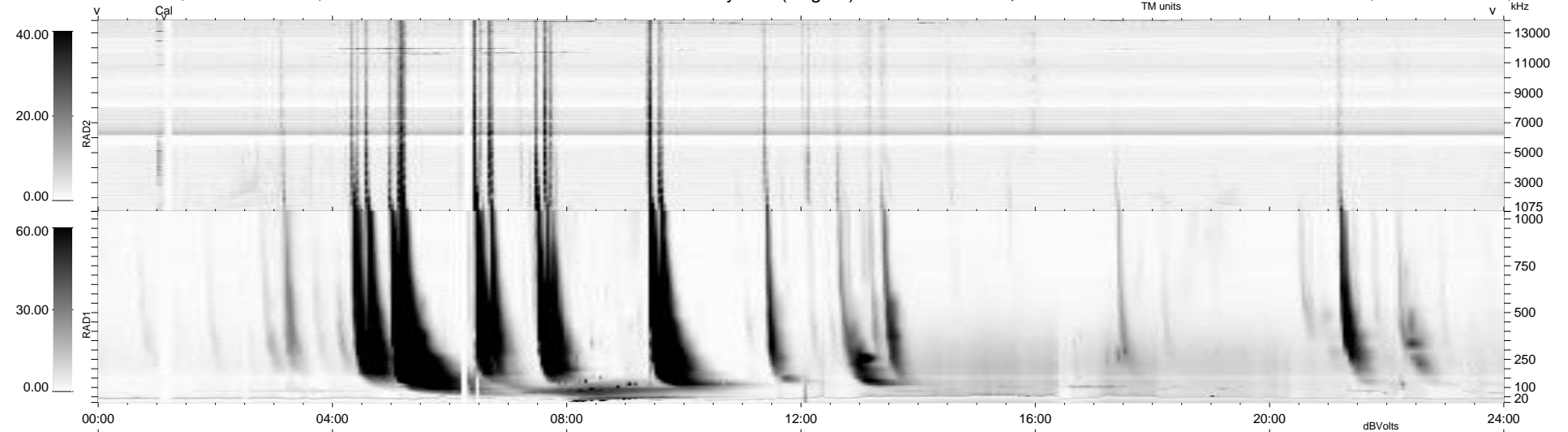
12 bad + 928 good MF/940MF projected (98%) - 0 missing MFs
 Avg interval = 180 secs
 Re = - 258.25 (251.79, 56.52, 10.00 GSE)

windlib 2.0b

LZ version = v01

WIND/WAVES Summary Plot (Page 1) for 06-MAR-2016, DOY = 66

DAILY 2016-03-08 03:52:04
 Re = 258.64 (252.78, 53.77, 10.37 GSE)



RAD2
 Antenna Ey
 Mode LIN(1)
 SUM/SEP SEP
 Toggle OFF

RAD1
 Antenna Ex
 Mode LIS(2,4)
 SUM/SEP SUM
 Toggle OFF

TNR
 Antenna ExEy
 Mode A-32
 Sweep ACE