

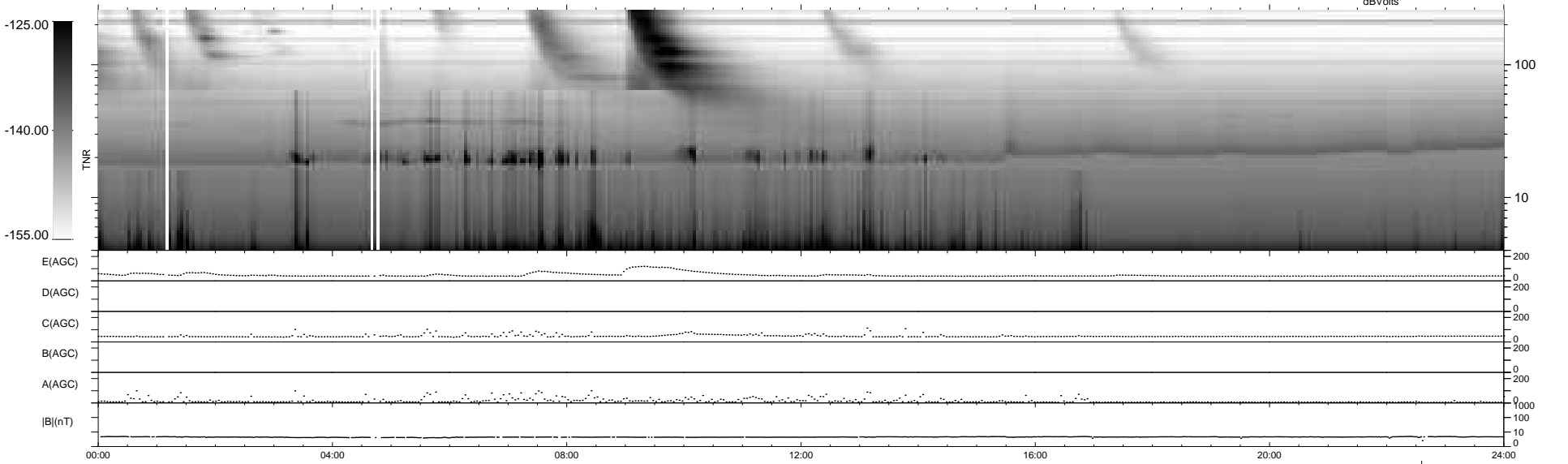
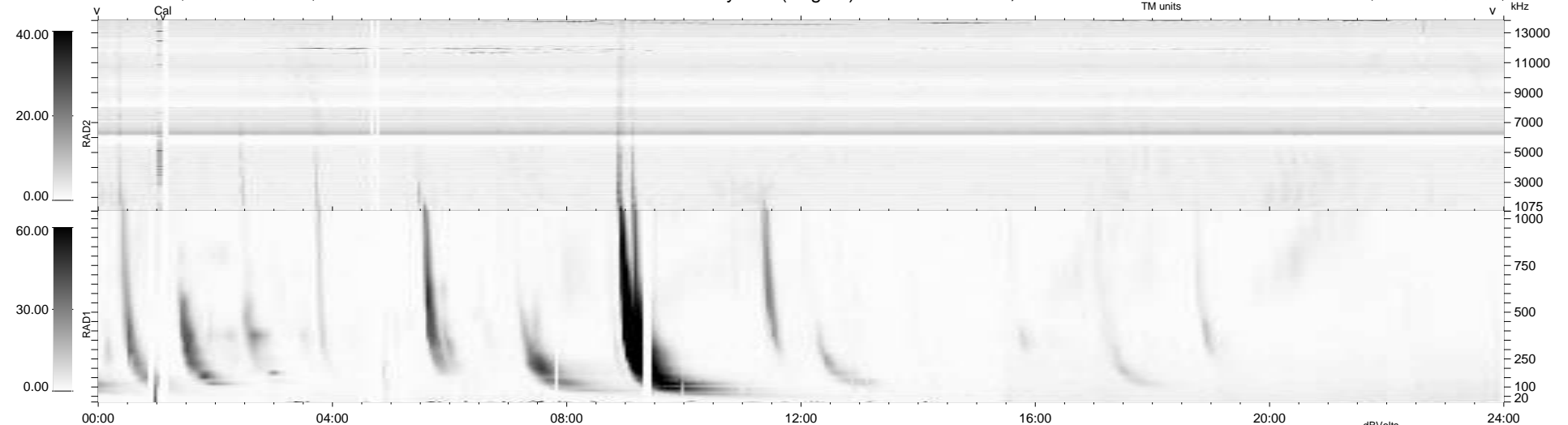
36 bad + 902 good MF/939MF projected (96%) - 1 missing MF
 Avg interval = 180 secs
 Re = 257.33 (249.60, 61.91, 9.22 GSE)

windlib 2.0b

LZ version = v01

WIND/WAVES Summary Plot (Page 1) for 04-MAR-2016, DOY = 64

DAILY 2016-03-05 18:52:06
 Re = 257.80 (250.72, 59.26, 9.62 GSE)



RAD2 Antenna Ey
 Mode LIN(1)
 SUM/SEP SEP
 Toggle OFF
 RAD1 Antenna Ex
 Mode LIS(2,4)
 SUM/SEP SUM
 Toggle OFF
 TNR Antenna ExEy
 Mode A-32
 Sweep ACE