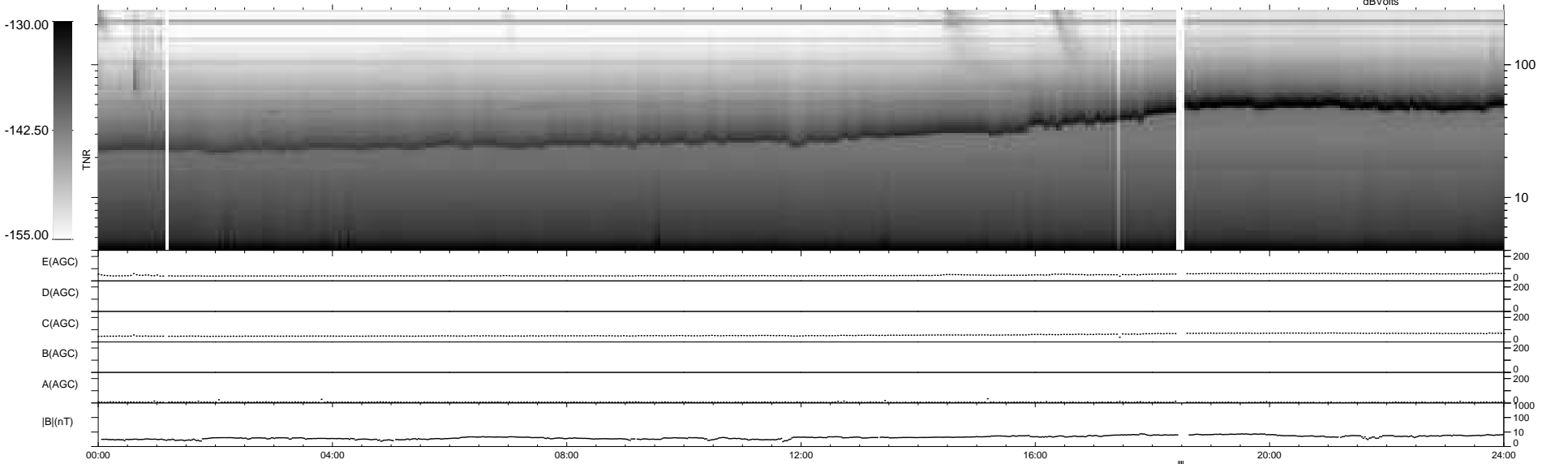
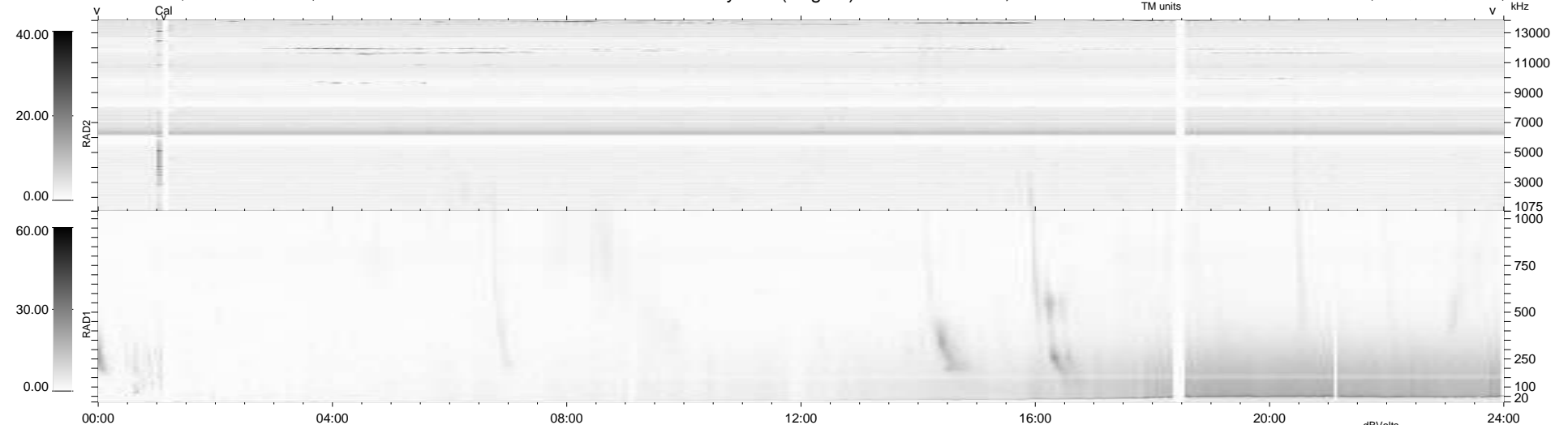


7 bad + 928 good MF/939MF projected (98%) - 4 missing MFs
 Avg interval = 180 secs
 Re = 255.24 (244.72, 72.12, 7.51 GSE)

windlib 2.0b LZ version = v01
 DAILY 2016-03-01 07:52:05
 Re = 255.78 (245.98, 69.67, 7.95 GSE)

WIND/WAVES Summary Plot (Page 1) for 29-FEB-2016, DOY = 60



```

RAD2
Antenna Ey .....
Mode LIN(1) .....
SUM/SEP SEP .....
Toggle OFF .....

RAD1
Antenna Ex .....
Mode LIS(2,4) .....
SUM/SEP SUM .....
Toggle OFF .....

TNR
Antenna ExEy .....
Mode A-32 .....
Sweep ACE .....
  
```