

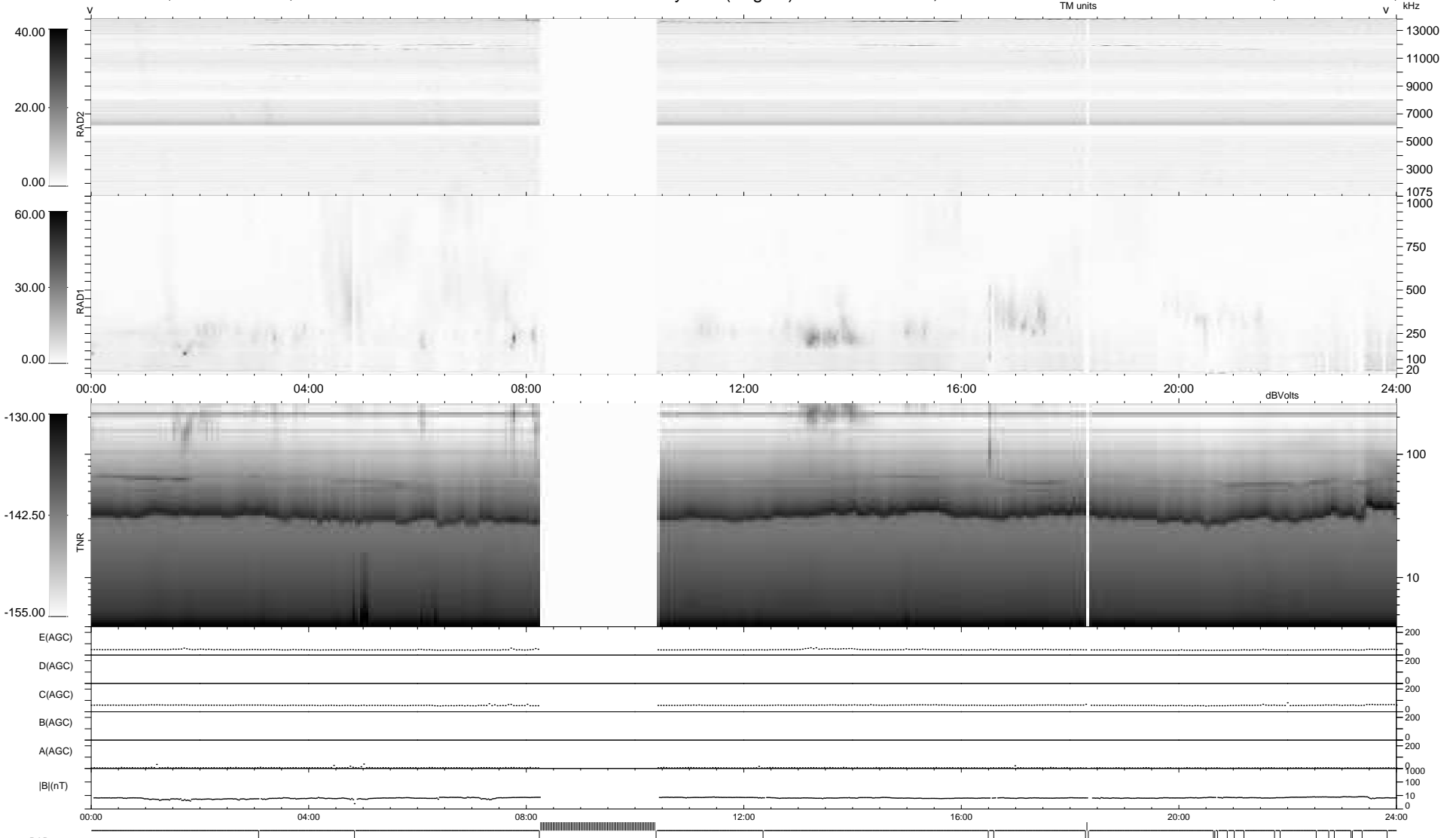
24 bad + 831 good MF/939MF projected (88%) - 84 missing MFs
 Avg interval = 180 secs
 Re = 252.52 (238.28, 83.44, 5.15 GSE)

windlib 2.0b

LZ version = v01

WIND/WAVES Summary Plot (Page 1) for 24-FEB-2016, DOY = 55

DAILY 2016-02-25 02:52:06
 Re = 253.05 (239.56, 81.35, 5.64 GSE)



RAD2 Antenna Ey
 Mode LIN(1)
 SUM/SEP SEP
 Toggle OFF
 RAD1 Antenna Ex
 Mode LIS(2,4)
 SUM/SEP SUM
 Toggle OFF
 TNR Antenna ExEy
 Mode A-32
 Sweep ACE