

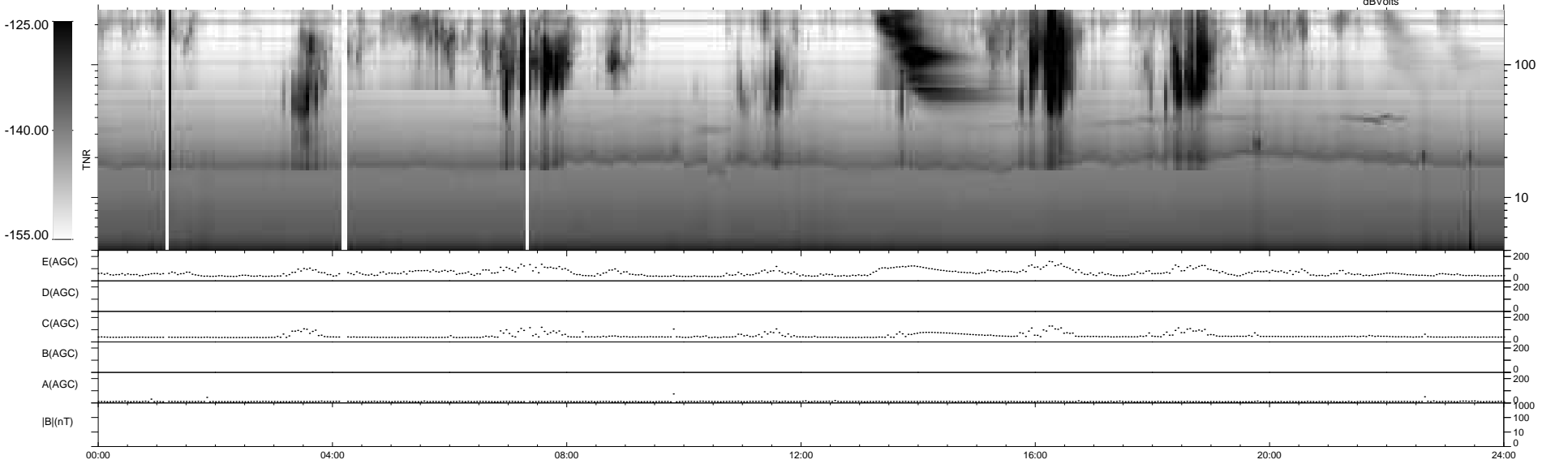
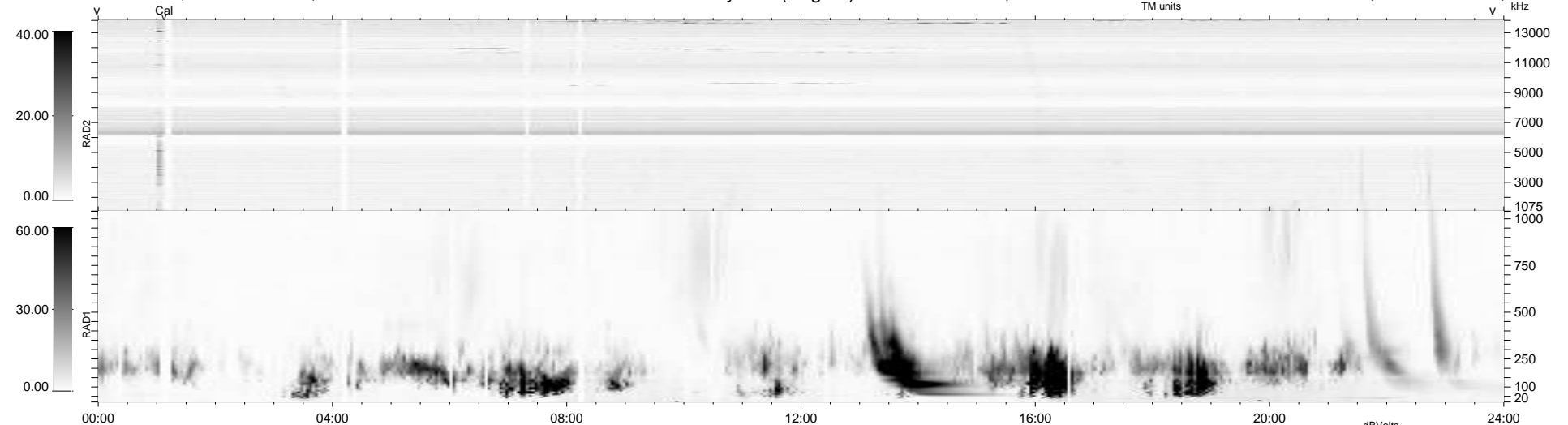
32 bad + 908 good MF/940MF projected (96%) - 0 missing MFs
 Avg interval = 180 secs
 Re = 249.80 (232.08, 92.36, 2.67 GSE)

windlib 2.0b

LZ version = v01

WIND/WAVES Summary Plot (Page 1) for 19-FEB-2016, DOY = 50

DAILY 2016-02-20 08:52:06
 Re = 250.35 (233.28, 90.83, 3.16 GSE)



RAD2 Antenna Ey
 Mode LIN(1)
 SUM/SEP SEP
 Toggle OFF
 RAD1 Antenna Ex
 Mode LIS(2,4)
 SUM/SEP SUM
 Toggle OFF
 TNR Antenna ExEy
 Mode A-32
 Sweep ACE