

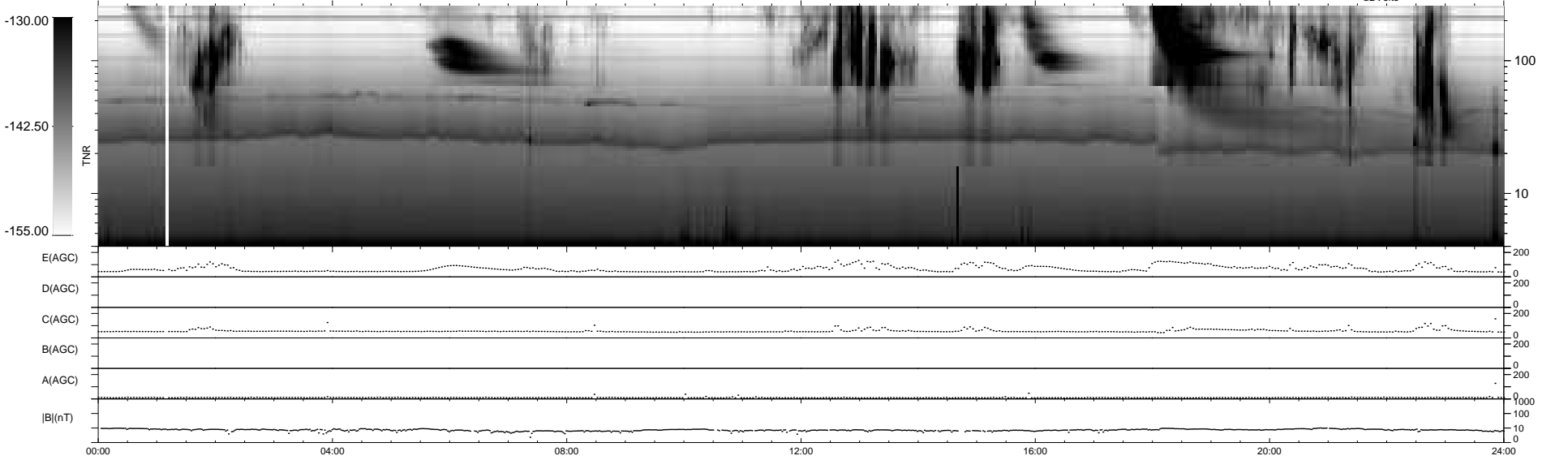
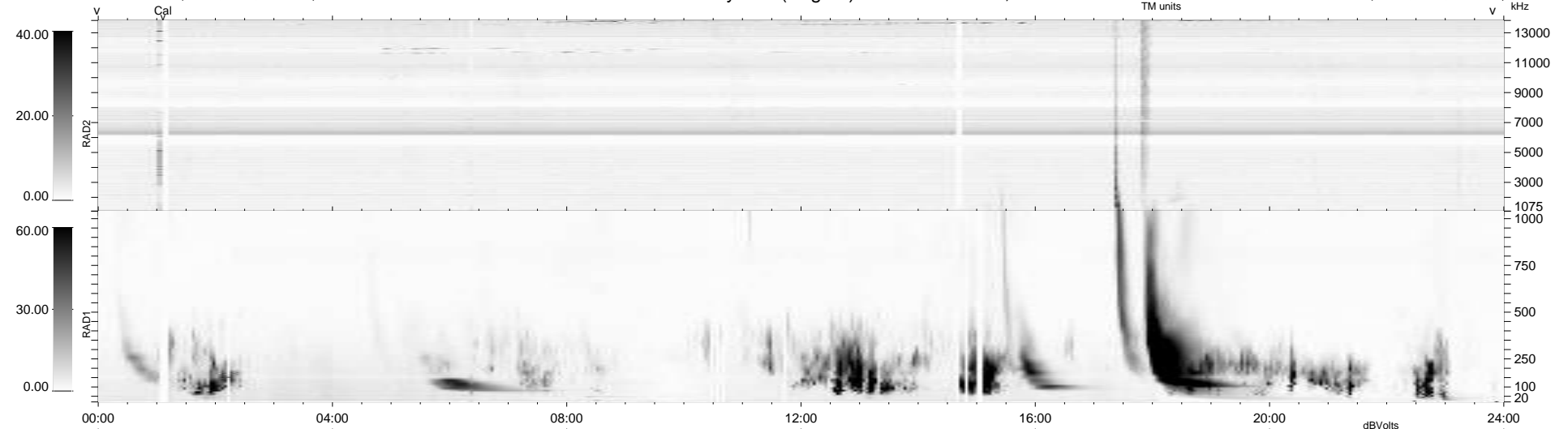
18 bad + 921 good MF/939MF projected (98%) - 0 missing MFs  
 Avg interval = 180 secs  
 Re = 248.62 (229.73, 95.04, 1.67 GSE)

windlib 2.0b

LZ version = v01

### WIND/WAVES Summary Plot (Page 1) for 17-FEB-2016, DOY = 48

DAILY 2016-02-18 16:52:12  
 Re = 249.22 (230.89, 93.78, 2.16 GSE)



```

RAD2
Antenna Ey .....
Mode LIN(1) .....
SUM/SEP SEP .....
Toggle OFF .....

RAD1
Antenna Ex .....
Mode LIS(2,4) .....
SUM/SEP SUM .....
Toggle OFF .....

TNR
Antenna ExEy .....
Mode A-32 .....
Sweep ACE .....
  
```