

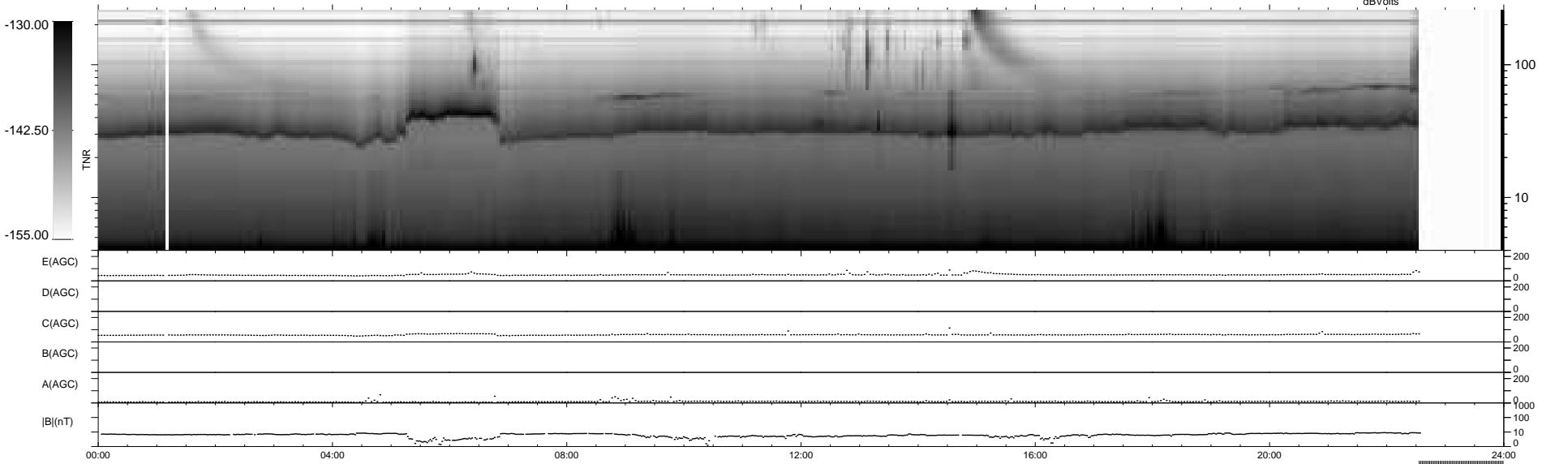
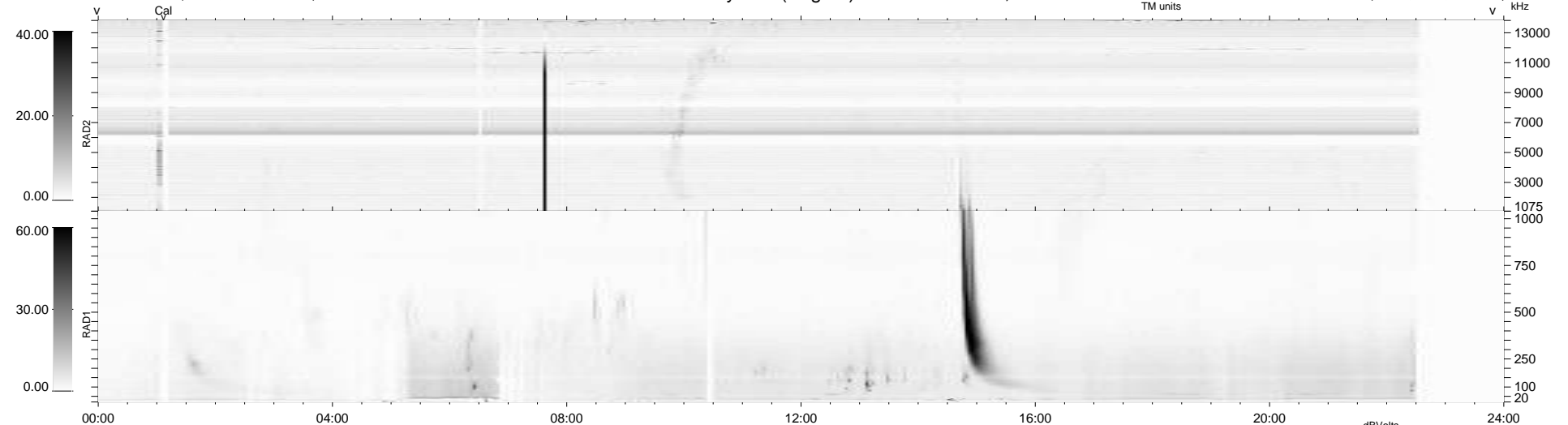
31 bad + 851 good MF/939MF projected (90%) - 57 missing MFs
 Avg interval = 180 secs
 Re = -247.30 (227.43, 97.13, 0.67 GSE)

windlib 2.0b

LZ version = v01

WIND/WAVES Summary Plot (Page 1) for 15-FEB-2016, DOY = 46

DAILY 2016-02-17 02:52:05
 Re = 247.98 (228.57, 96.17, 1.17 GSE)



```

RAD2
Antenna Ey .....
Mode LIN(1) .....
SUM/SEP SEP .....
Toggle OFF .....

RAD1
Antenna Ex .....
Mode LIS(2,4) .....
SUM/SEP SUM .....
Toggle OFF .....

TNR
Antenna ExEy .....
Mode A-32 .....
Sweep ACE .....
  
```