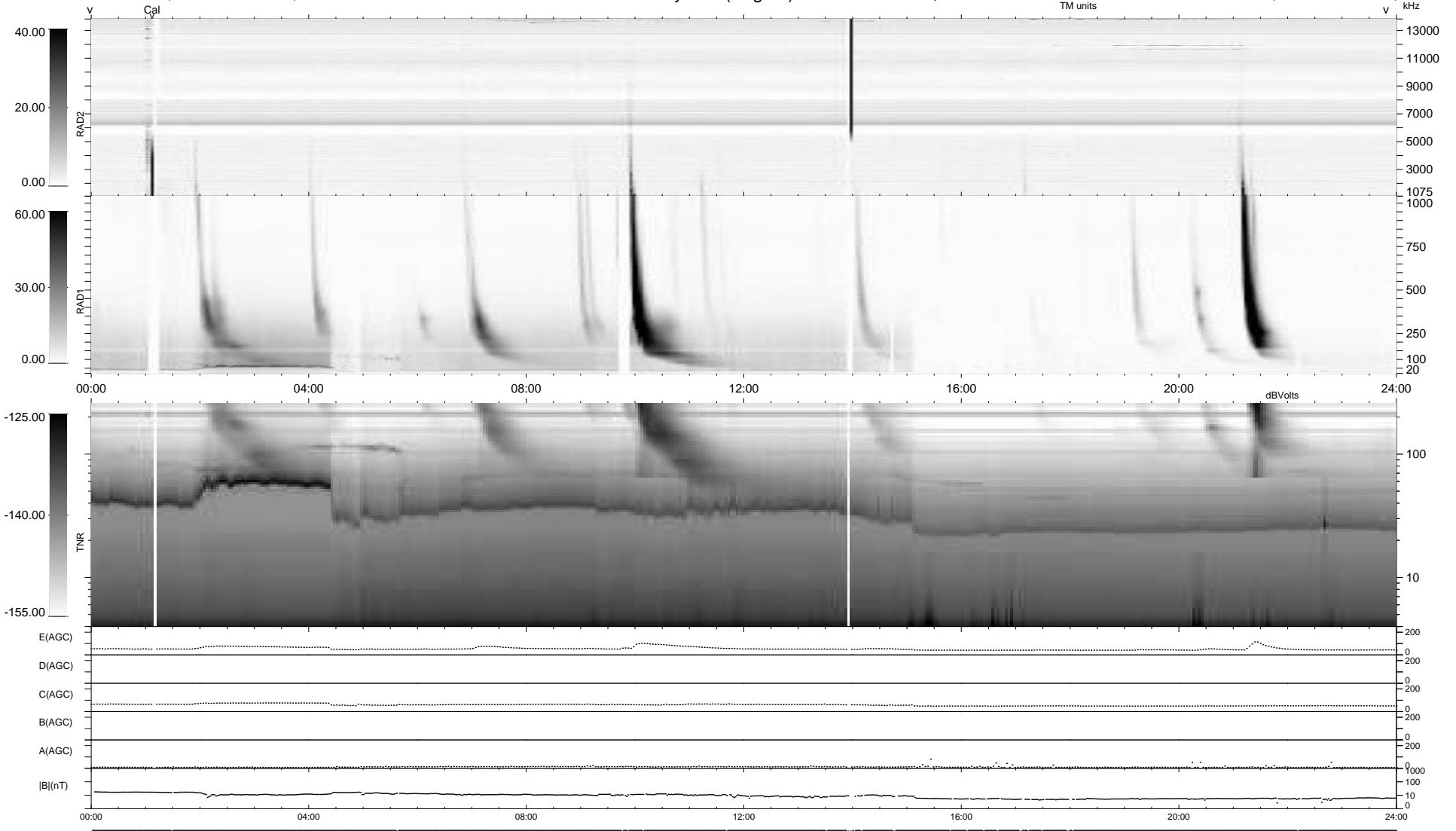


27 bad + 912 good MF/939MF projected (97%) - 0 missing MFs
 Avg interval = 180 secs
 Re = -245.78 (225.13, 98.60, -0.31 GSE)

windlib 2.0b LZ version = v01
 DAILY 2016-02-14 18:52:06
 Re = 246.56 (226.27, 97.95, 0.18 GSE)

WIND/WAVES Summary Plot (Page 1) for 13-FEB-2016, DOY = 44



RAD2
 Antenna Ey
 Mode LIN(1)
 SUM/SEP SEP
 Toggle OFF

RAD1
 Antenna Ex
 Mode LIS(2,4)
 SUM/SEP SUM
 Toggle OFF

TNR
 Antenna ExEy
 Mode A-32
 Sweep ACE