

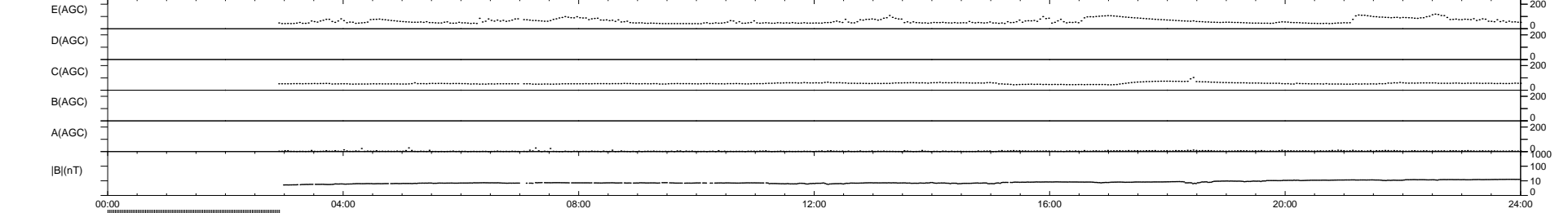
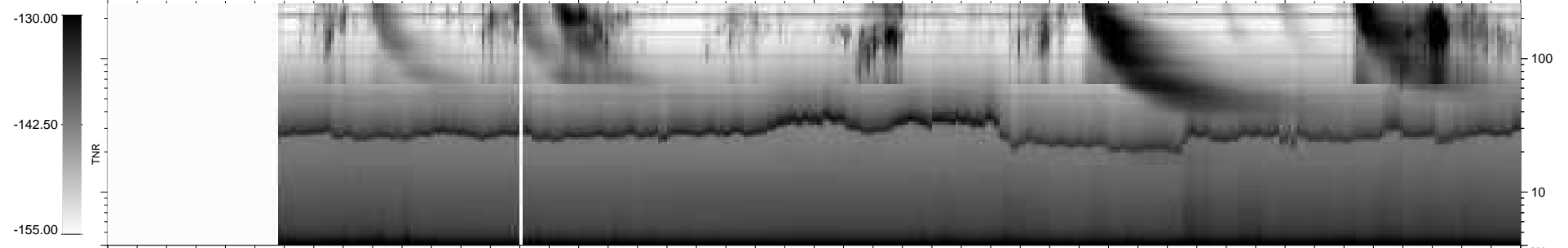
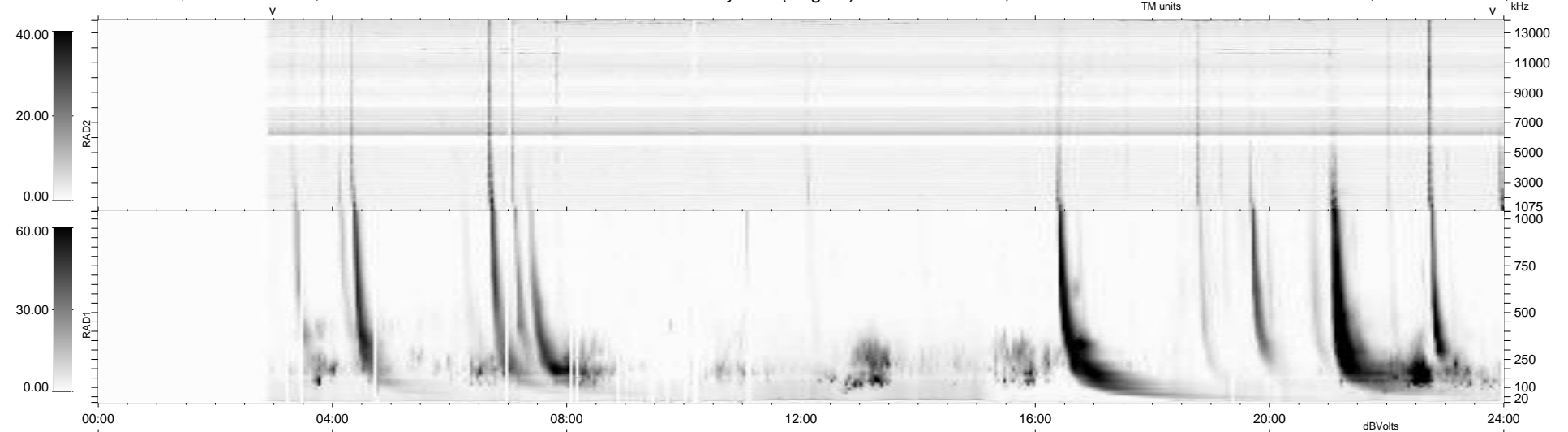
25 bad + 799 good MF/939MF projected (85%) - 115 missing MFs
Avg interval = 180 secs
Re = 244.11 (222.94, 99.43, -1.22 GSE)

windlib 2.0b

LZ version = v01

WIND/WAVES Summary Plot (Page 1) for 11-FEB-2016, DOY = 42

DAILY 2016-02-12 09:52:09
Re = 244.91 (223.96, 99.11, -0.80 GSE)



RAD2 Antenna Mode SUM/SEP Toggle
RAD1 Antenna Mode SUM/SEP Toggle
TNR Antenna Mode Sweep