

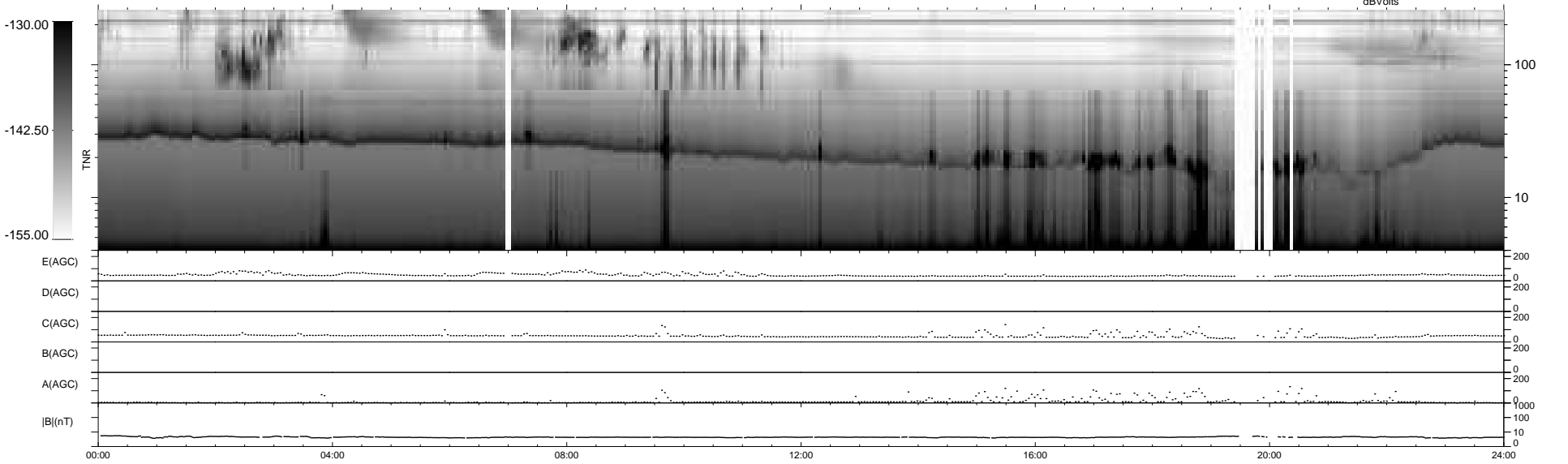
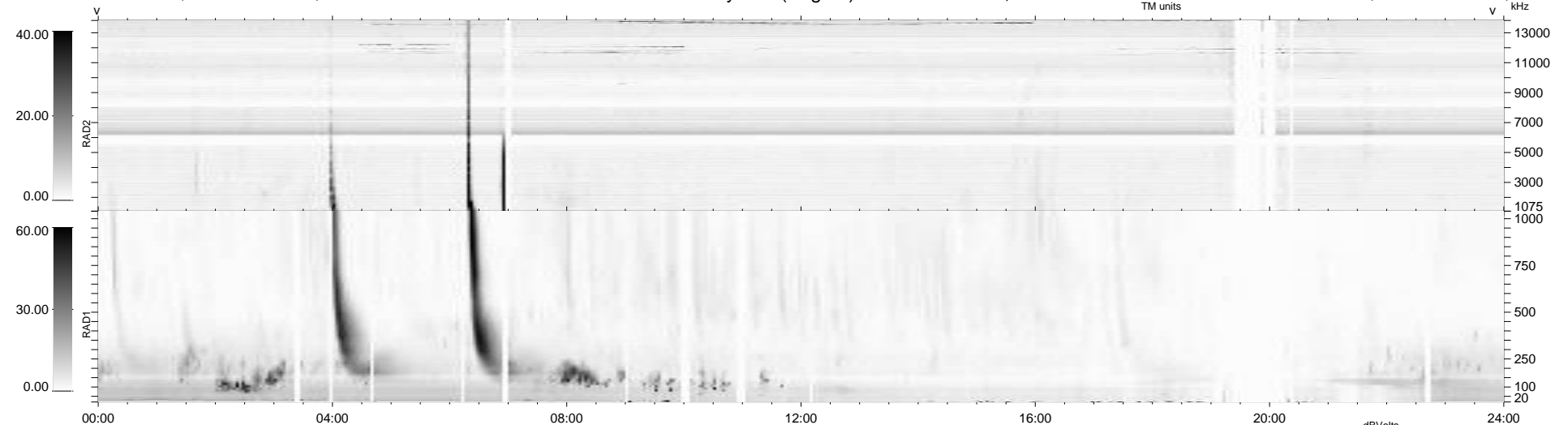
65 bad + 874 good MF/939MF projected (93%) - 0 missing MFs
 Avg interval = 180 secs
 Re = -242.99 (221.60, 99.68, -1.77 GSE)

windlib 2.0b

LZ version = v02

WIND/WAVES Summary Plot (Page 1) for 10-FEB-2016, DOY = 41

DAILY 2016-02-12 11:52:05
 Re = 243.99 (222.79, 99.47, -1.29 GSE)



```

RAD2
Antenna Ey .....
Mode LIN(1) .....
SUM/SEP SEP .....
Toggle OFF .....

RAD1
Antenna Ex .....
Mode LIS(2,4) .....
SUM/SEP SUM .....
Toggle OFF .....

TNR
Antenna ExEy .....
Mode A-32 .....
Sweep ACE .....
  
```