

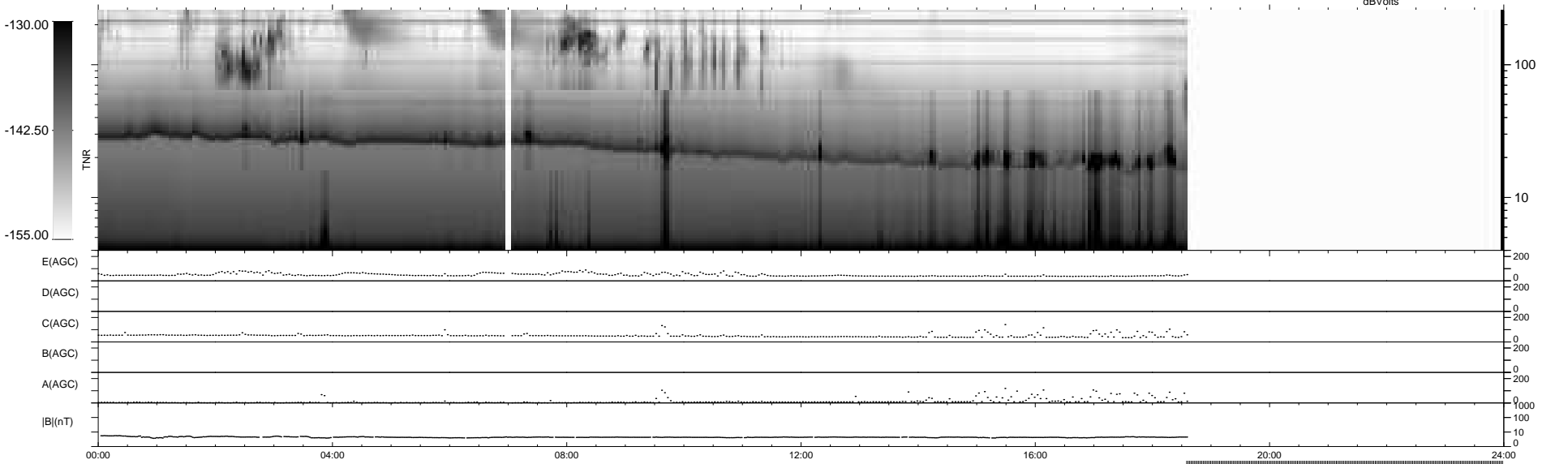
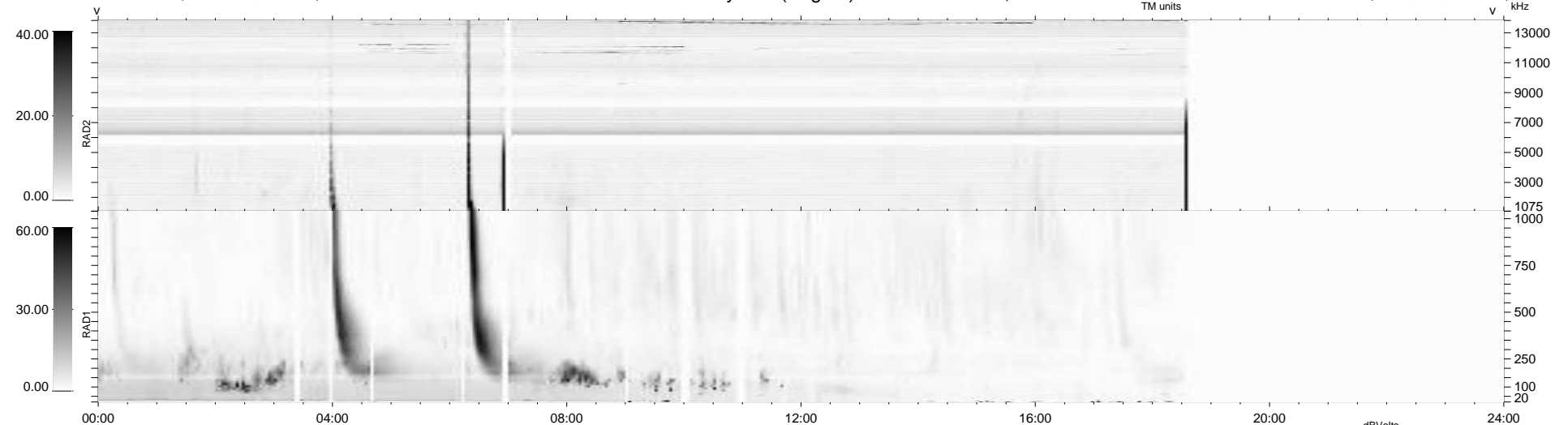
32 bad + 695 good MF/939MF projected (74%) - 212 missing MFs  
 Avg interval = 180 secs  
 Re = -242.99 (221.60, 99.68, -1.77 GSE)

windlib 2.0b

LZ version = v01

### WIND/WAVES Summary Plot (Page 1) for 10-FEB-2016, DOY = 41

DAILY 2016-02-12 02:52:09  
 Re = 243.99 (222.79, 99.47, -1.29 GSE)



RAD2  
 Antenna Ey .....  
 Mode LIN(1) .....  
 SUM/SEP SEP .....  
 Toggle OFF .....  
 RAD1  
 Antenna Ex .....  
 Mode LIS(2,4) .....  
 SUM/SEP SUM .....  
 Toggle OFF .....  
 TNR  
 Antenna ExEy .....  
 Mode A-32 .....  
 Sweep ACE .....