

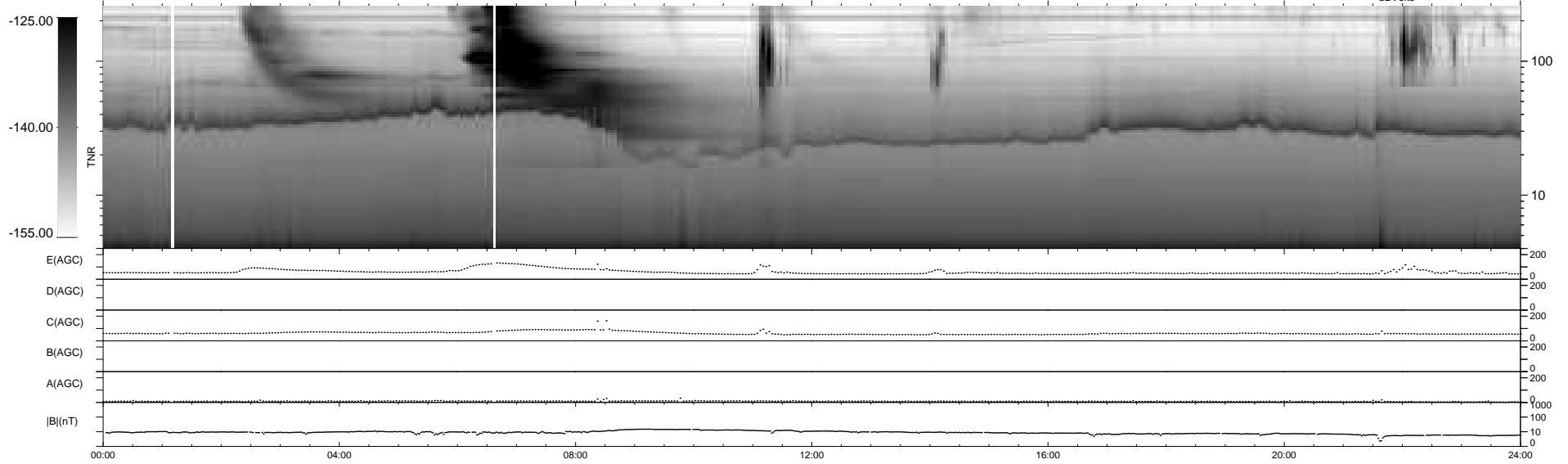
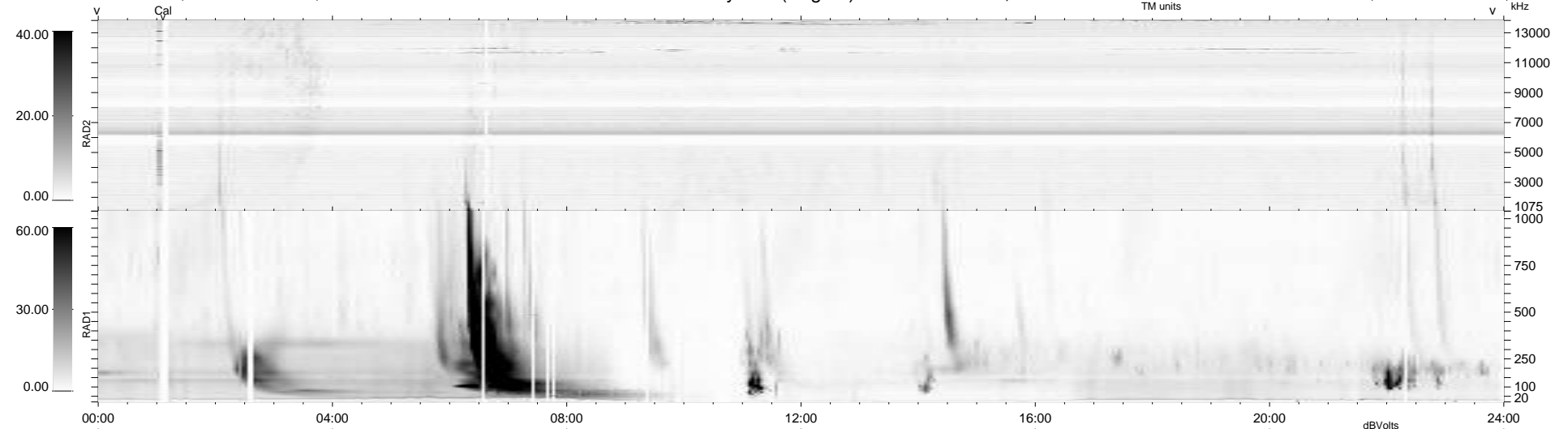
31 bad + 908 good MF/939MF projected (96%) - 0 missing MFs
 Avg interval = 180 secs
 Re = 241.92 (220.39, 99.75, -2.25 GSE)

windlib 2.0b

LZ version = v01

WIND/WAVES Summary Plot (Page 1) for 09-FEB-2016, DOY = 40

DAILY 2016-02-10 19:52:04
 Re = 242.99 (221.59, 99.68, -1.77 GSE)



```

RAD2
Antenna Ey .....
Mode LIN(1) .....
SUM/SEP SEP .....
Toggle OFF .....

RAD1
Antenna Ex .....
Mode LIS(2,4) .....
SUM/SEP SUM .....
Toggle OFF .....

TNR
Antenna ExEy .....
Mode A-32 .....
Sweep ACE .....
  
```