

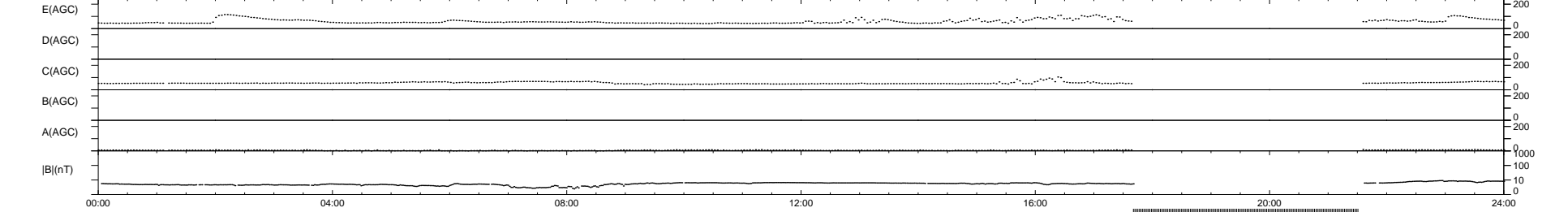
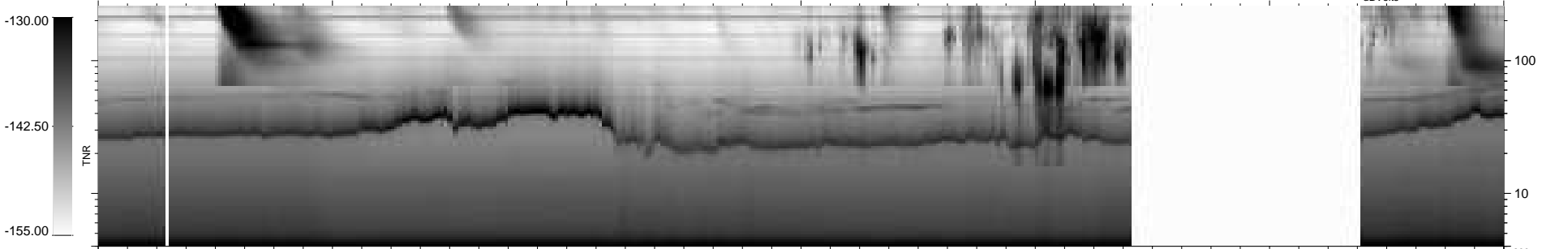
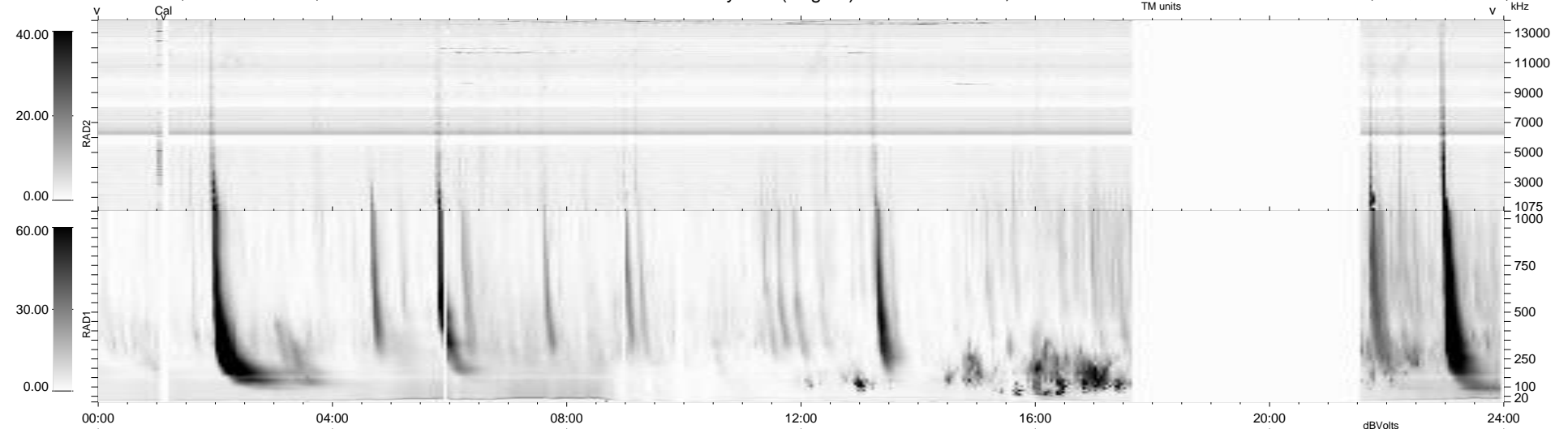
29 bad + 759 good MF/939MF projected (80%) - 151 missing MFs  
 Avg interval = 180 secs  
 Re = -239.59 (217.91, 99.53, -3.21 GSE)

windlib 2.0b

LZ version = v01

### WIND/WAVES Summary Plot (Page 1) for 07-FEB-2016, DOY = 38

DAILY 2016-02-08 09:52:05  
 Re = 240.78 (219.15, 99.70, -2.74 GSE)



RAD2  
 Antenna Ey  
 Mode LIN(1)  
 SUM/SEP SEP  
 Toggle OFF

RAD1  
 Antenna Ex  
 Mode LIS(2,4)  
 SUM/SEP SUM  
 Toggle OFF

TNR  
 Antenna ExEy  
 Mode A-32  
 Sweep ACE