

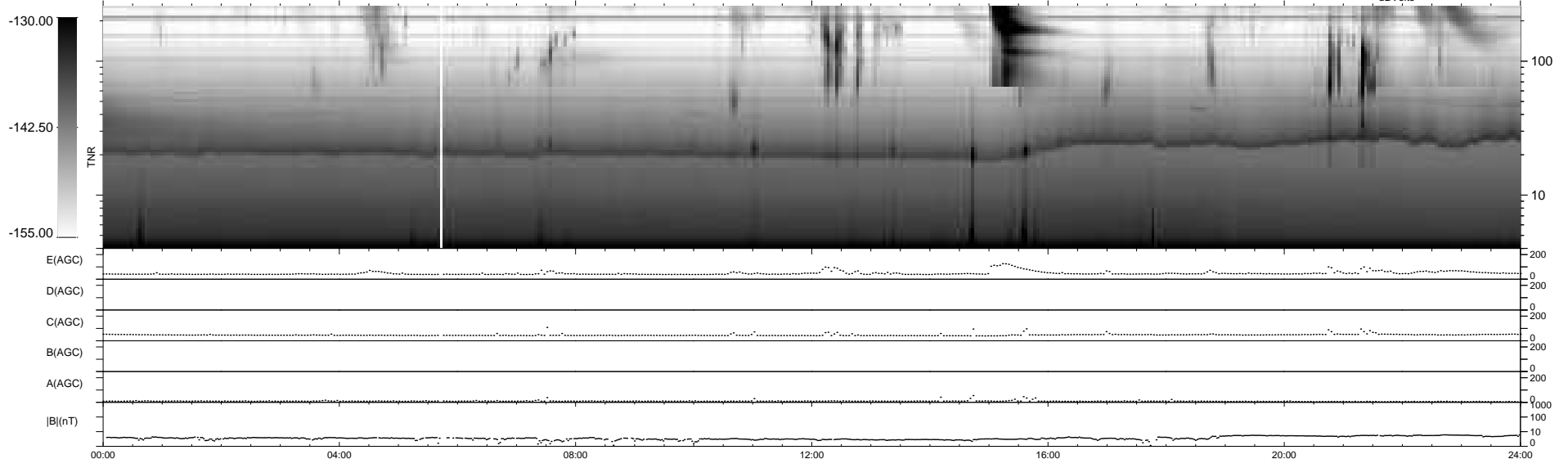
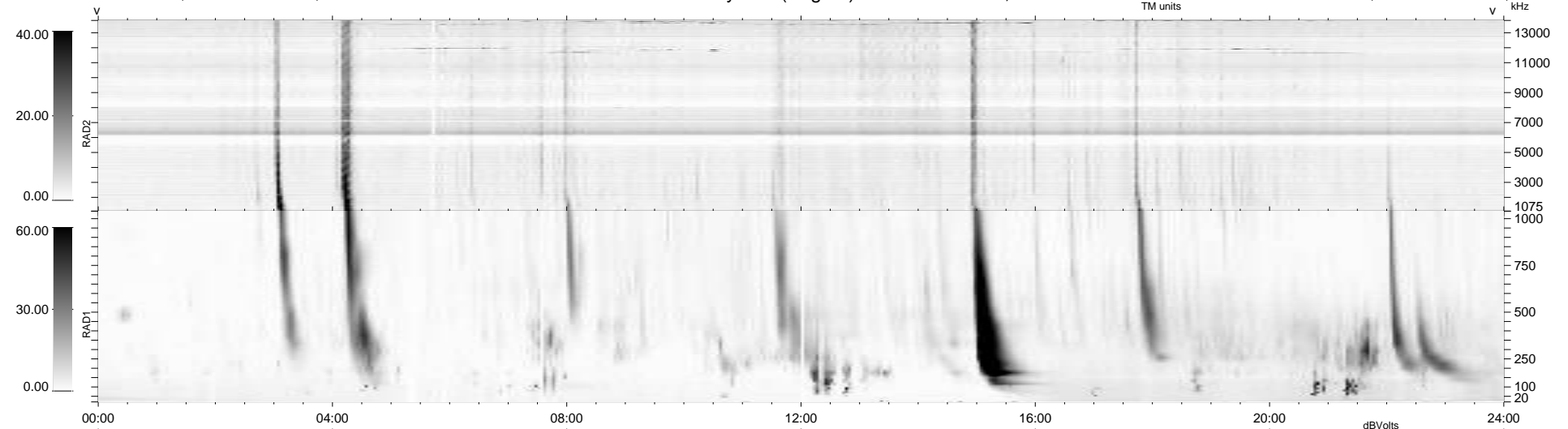
35 bad + 904 good MF/939MF projected (96%) - 0 missing MFs
 Avg interval = 180 secs
 Re = 238.33 (216.65, 99.24, -3.69 GSE)

windlib 2.0b

LZ version = v01

WIND/WAVES Summary Plot (Page 1) for 06-FEB-2016, DOY = 37

DAILY 2016-02-07 18:52:06
 Re = 239.58 (217.90, 99.53, -3.22 GSE)



RAD2
 Antenna Ey
 Mode LIN(1)
 SUM/SEP SEP
 Toggle OFF

RAD1
 Antenna Ex
 Mode LIS(2,4)
 SUM/SEP SUM
 Toggle OFF

TNR
 Antenna ExEy
 Mode A-32
 Sweep ACE