

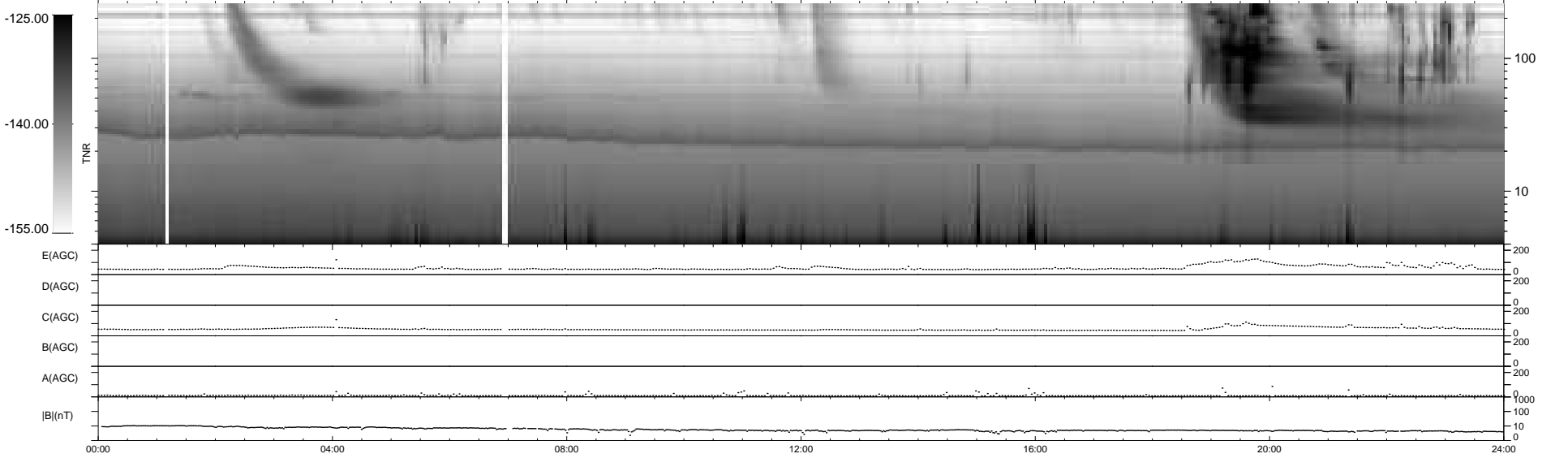
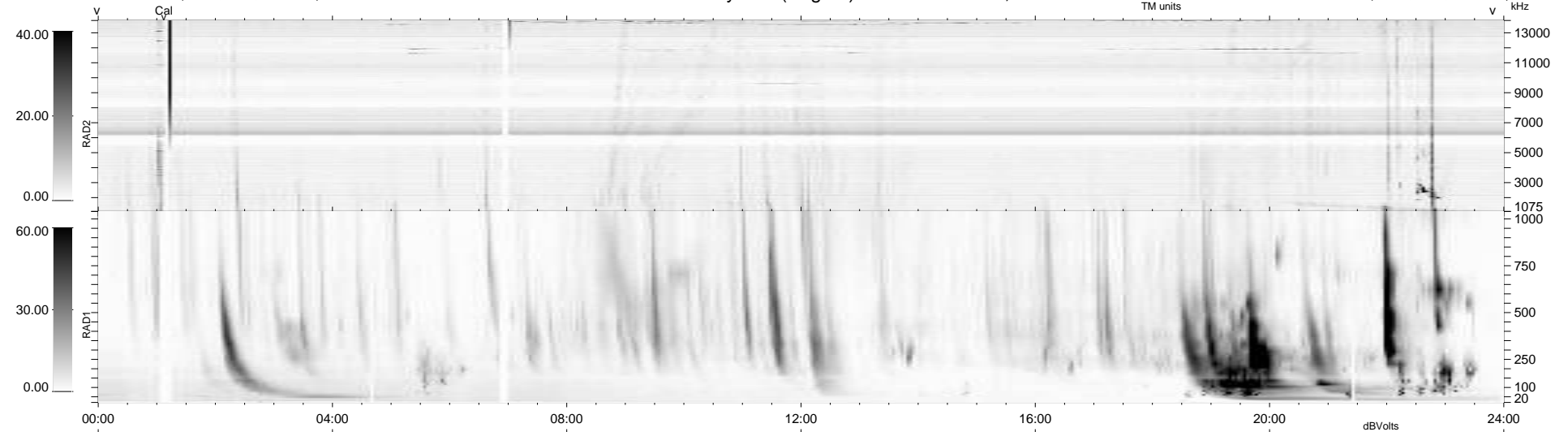
17 bad + 922 good MF/939MF projected (98%) - 0 missing MFs  
 Avg interval = 180 secs  
 Re = 237.03 (215.39, 98.85, -4.17 GSE)

windlib 2.0b

LZ version = v01

### WIND/WAVES Summary Plot (Page 1) for 05-FEB-2016, DOY = 36

DAILY 2016-02-06 18:52:07  
 Re = 238.32 (216.65, 99.24, -3.70 GSE)



RAD2  
 Antenna Ey .....  
 Mode LIN(1) .....  
 SUM/SEP SEP .....  
 Toggle OFF .....  
 RAD1  
 Antenna Ex .....  
 Mode LIS(2,4) .....  
 SUM/SEP SUM .....  
 Toggle OFF .....  
 TNR  
 Antenna ExEy .....  
 Mode A-32 .....  
 Sweep ACE .....