

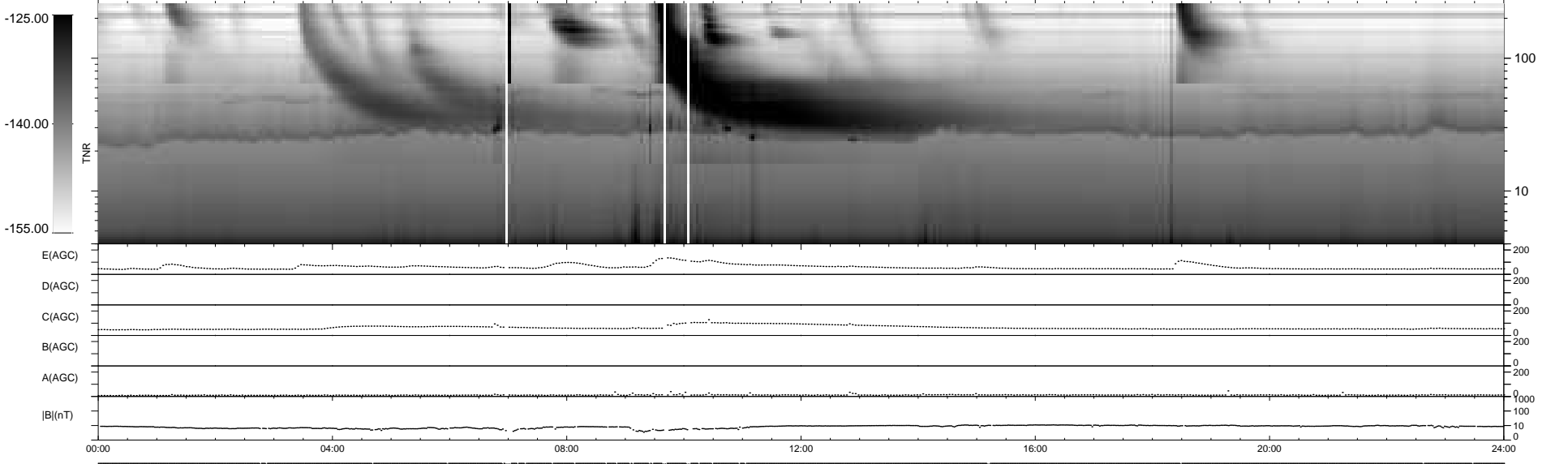
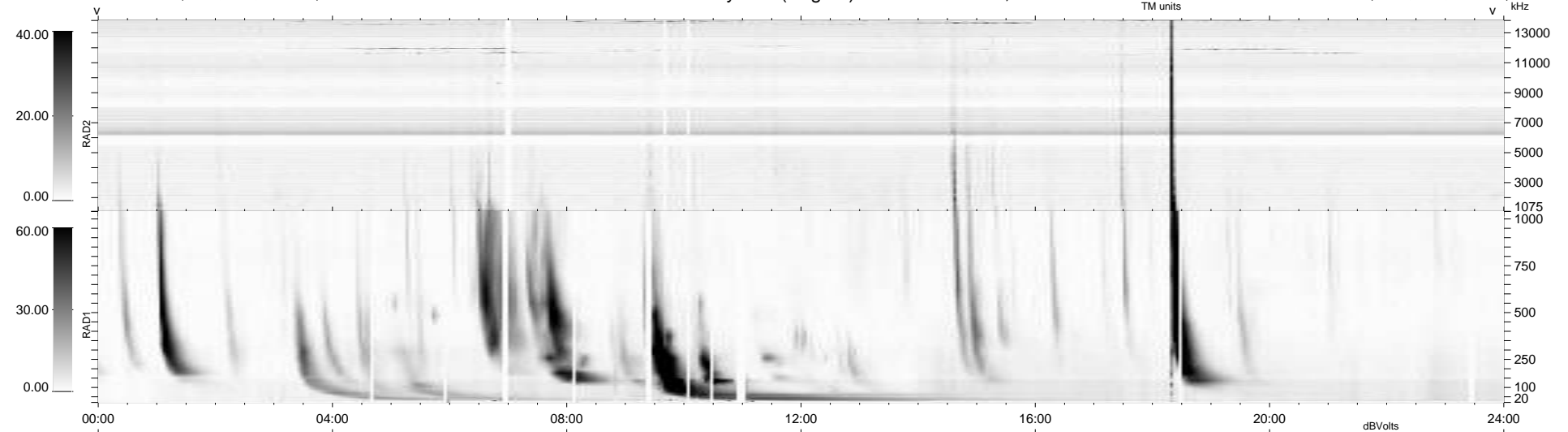
34 bad + 906 good MF/940MF projected (96%) - 0 missing MFs
 Avg interval = 180 secs
 Re = -235.69 (214.14, 98.35, -4.65 GSE)

windlib 2.0b

LZ version = v02

WIND/WAVES Summary Plot (Page 1) for 04-FEB-2016, DOY = 35

DAILY 2016-02-08 10:52:04
 Re = 237.02 (215.39, 98.84, -4.18 GSE)



RAD2
 Antenna Ey
 Mode LIN(1)
 SUM/SEP SEP
 Toggle OFF

RAD1
 Antenna Ex
 Mode LIS(2,4)
 SUM/SEP SUM
 Toggle OFF

TNR
 Antenna ExEy
 Mode A-32
 Sweep ACE