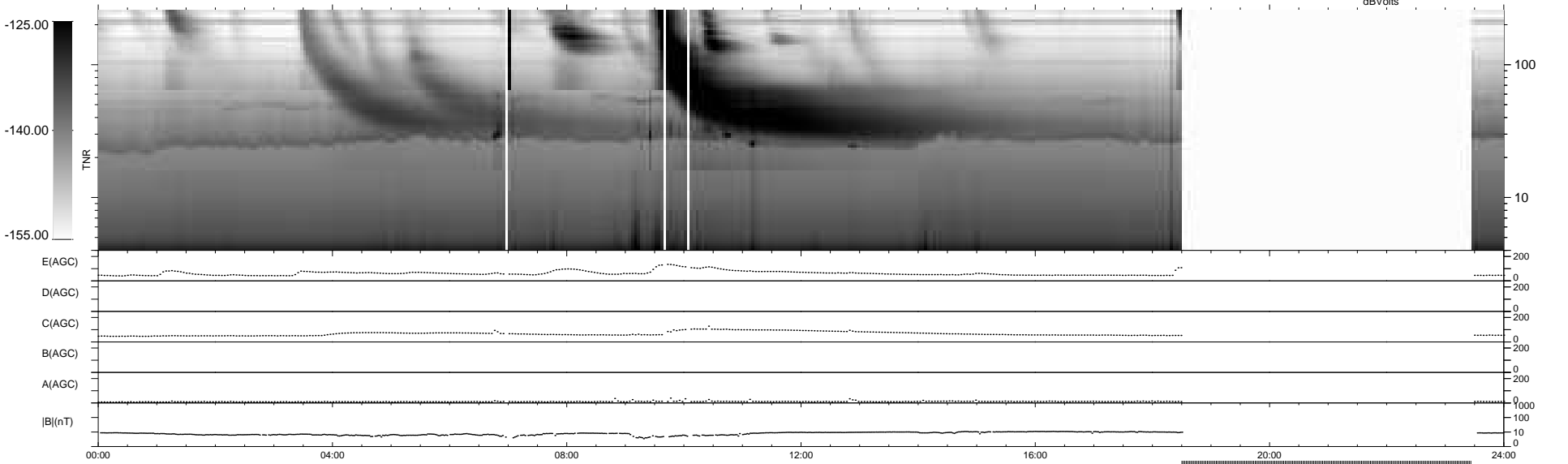
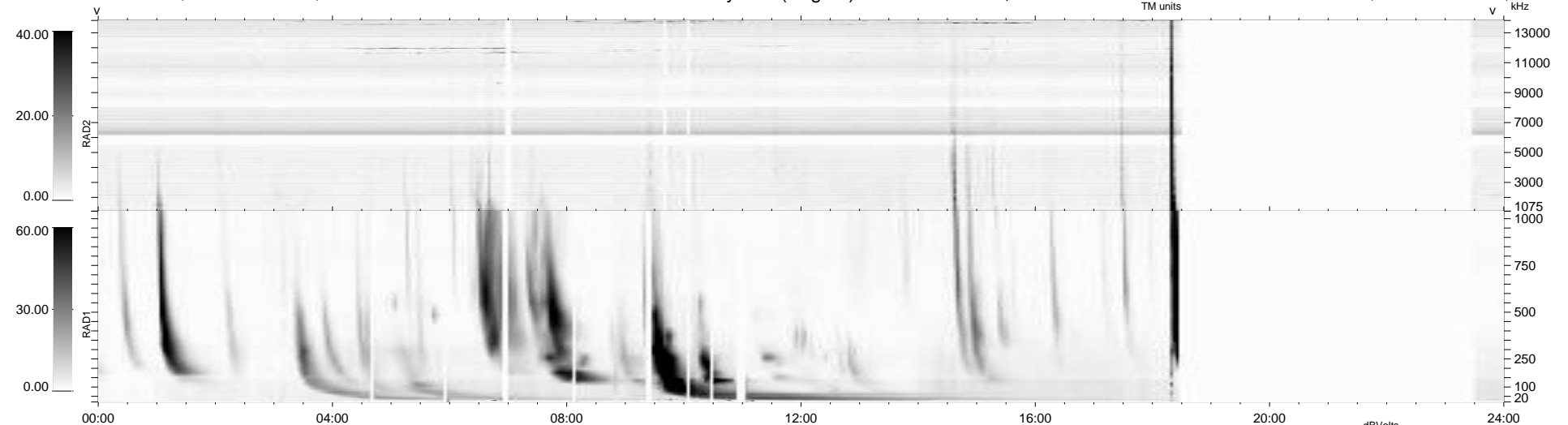


33 bad + 713 good MF/940MF projected (75%) - 194 missing MFs  
 Avg interval = 180 secs  
 Re = -235.69 (214.14, 98.35, -4.65 GSE)

windlib 2.0b LZ version = v01  
 DAILY 2016-02-05 09:52:05  
 Re = 237.02 (215.39, 98.84, -4.18 GSE)

### WIND/WAVES Summary Plot (Page 1) for 04-FEB-2016, DOY = 35



```

RAD2
Antenna Ey .....
Mode LIN(1) .....
SUM/SEP SEP .....
Toggle OFF .....

RAD1
Antenna Ex .....
Mode LIS(2,4) .....
SUM/SEP SUM .....
Toggle OFF .....

TNR
Antenna ExEy .....
Mode A-32 .....
Sweep ACE .....
  
```