

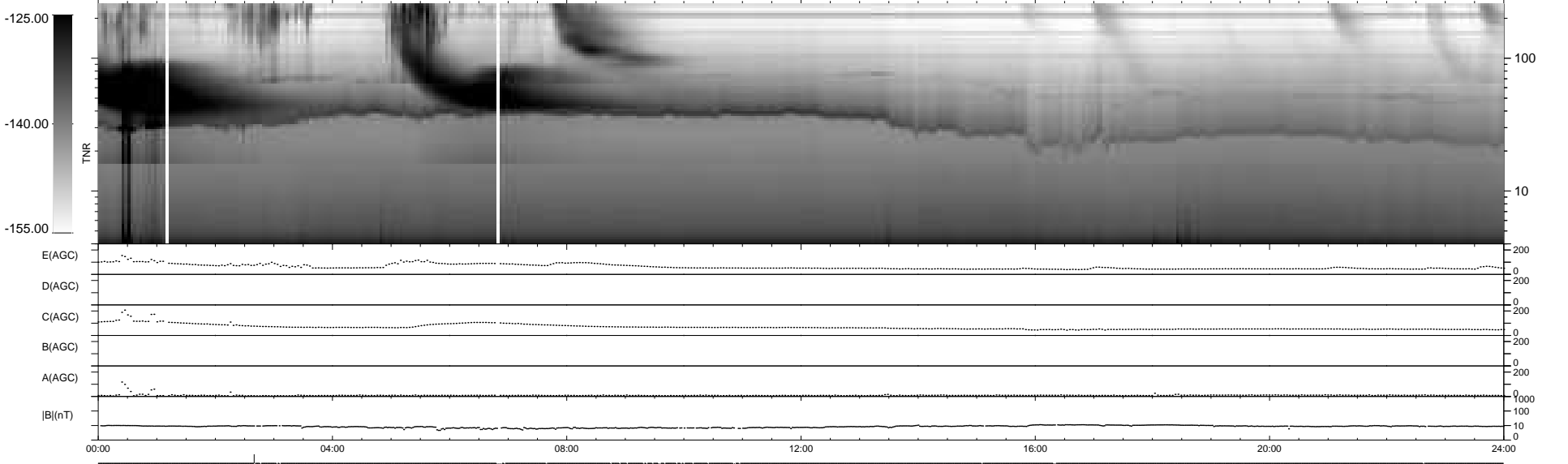
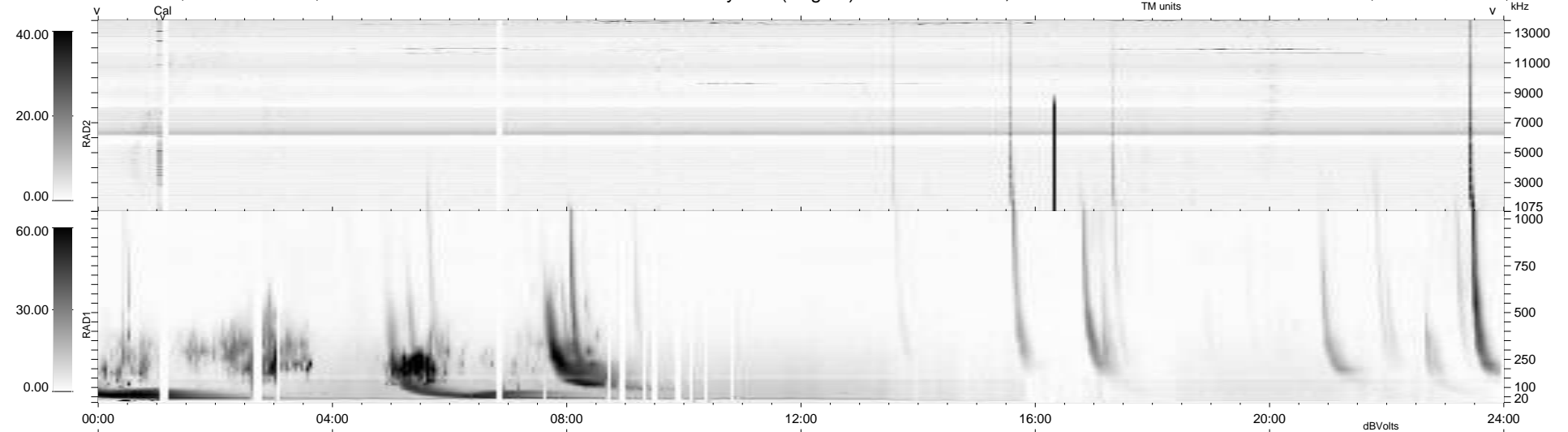
30 bad + 908 good MF/939MF projected (96%) - 1 missing MF  
 Avg interval = 180 secs  
 Re = 234.31 (212.89, 97.75, -5.13 GSE)

windlib 2.0b

LZ version = v01

### WIND/WAVES Summary Plot (Page 1) for 03-FEB-2016, DOY = 34

DAILY 2016-02-04 18:52:05  
 Re = 235.68 (214.13, 98.34, -4.66 GSE)



RAD2  
 Antenna Ey .....  
 Mode LIN(1) .....  
 SUM/SEP SEP .....  
 Toggle OFF .....  
 RAD1  
 Antenna Ex .....  
 Mode LIS(2,4) .....  
 SUM/SEP SUM .....  
 Toggle OFF .....  
 TNR  
 Antenna ExEy .....  
 Mode A-32 .....  
 Sweep ACE .....