

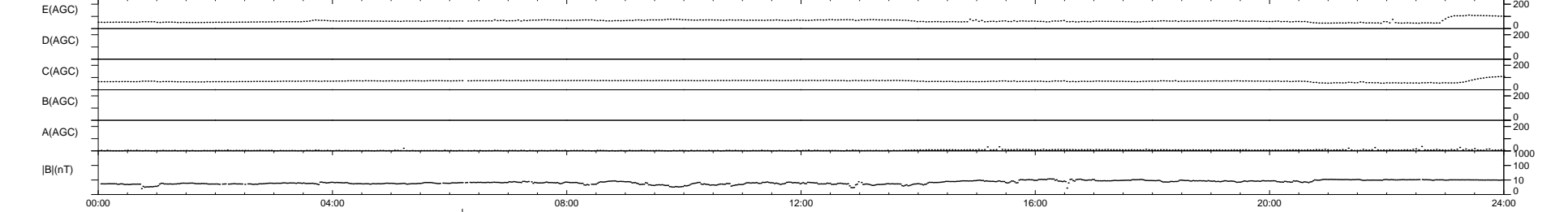
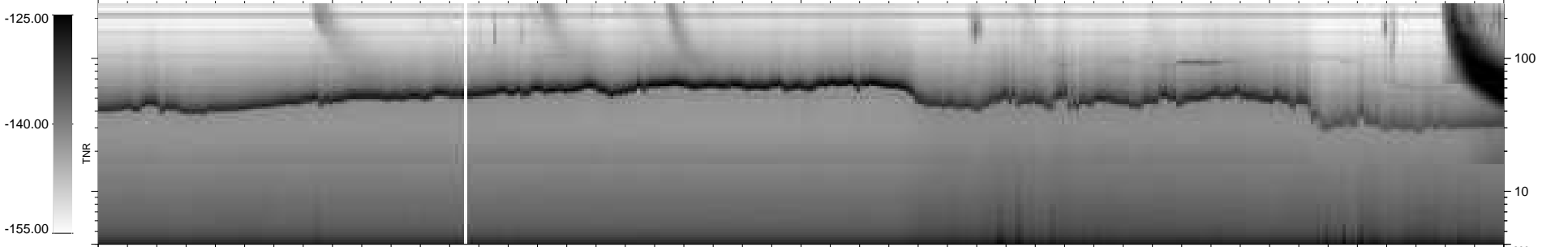
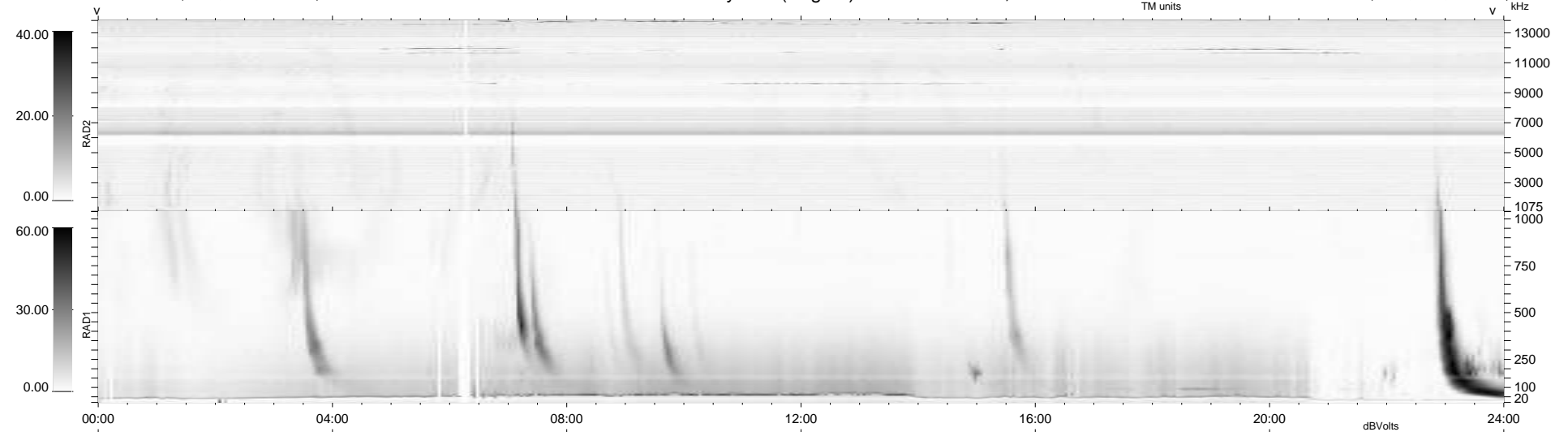
18 bad + 920 good MF/939MF projected (97%) - 1 missing MF
 Avg interval = 180 secs
 Re = 232.92 (211.66, 97.05, -5.60 GSE)

windlib 2.0b

LZ version = v01

WIND/WAVES Summary Plot (Page 1) for 02-FEB-2016, DOY = 33

DAILY 2016-02-03 18:52:06
 Re = 234.30 (212.88, 97.74, -5.13 GSE)



RAD2
 Antenna Ey
 Mode LIN(1)
 SUM/SEP SEP
 Toggle OFF

RAD1
 Antenna Ex
 Mode LIS(2,4)
 SUM/SEP SUM
 Toggle OFF

TNR
 Antenna ExEy
 Mode A-32
 Sweep ACE