

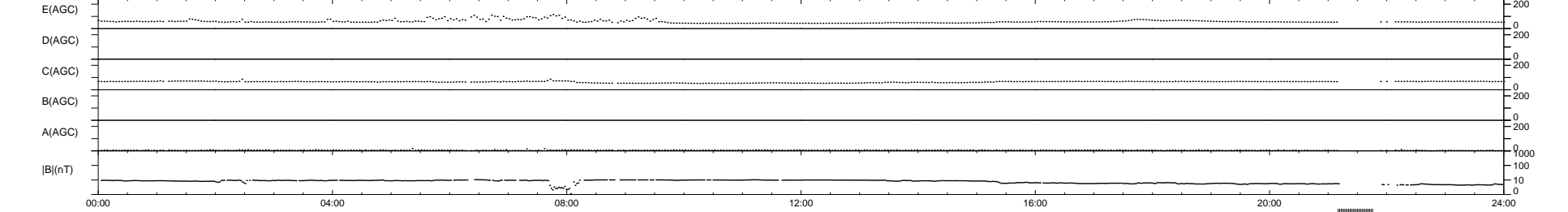
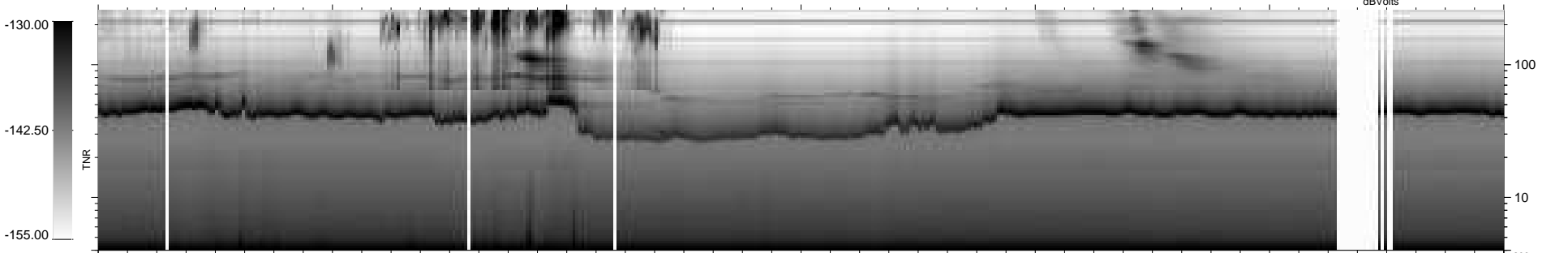
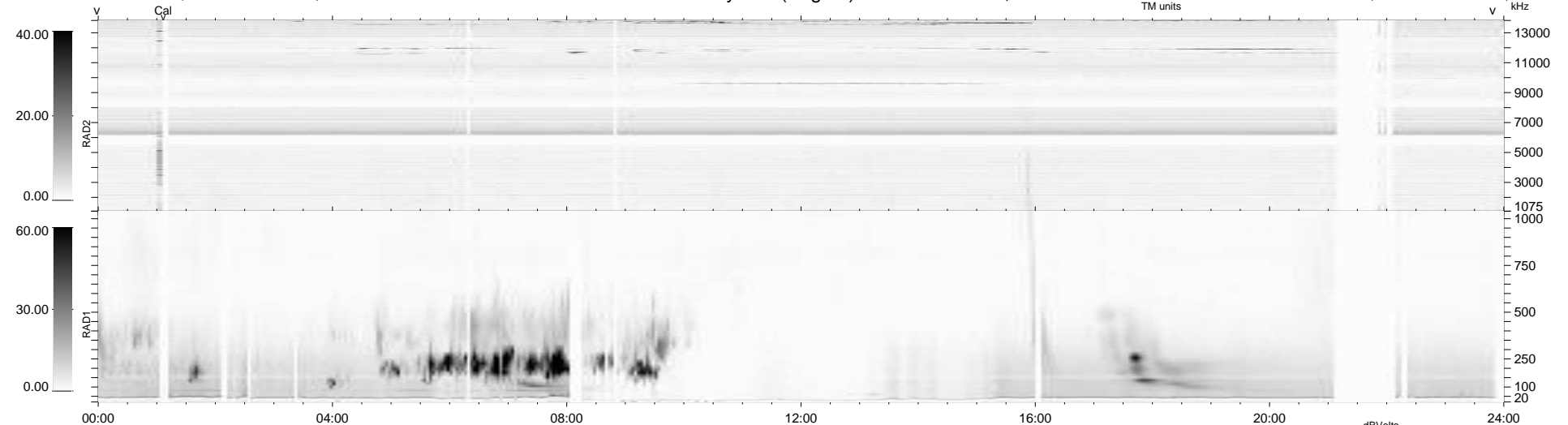
48 bad + 867 good MF/939MF projected (92%) - 24 missing MFs
 Avg interval = 180 secs
 Re = 231.51 (210.46, 96.26, -6.07 GSE)

windlib 2.0b

LZ version = v02

WIND/WAVES Summary Plot (Page 1) for 01-FEB-2016, DOY = 32

DAILY 2016-02-02 11:52:06
 Re = 232.91 (211.65, 97.04, -5.60 GSE)



RAD2
 Antenna Ey
 Mode LIN(1)
 SUM/SEP SEP
 Toggle OFF

RAD1
 Antenna Ex
 Mode LIS(2,4)
 SUM/SEP SUM
 Toggle OFF

TNR
 Antenna ExEy
 Mode A-32
 Sweep ACE