

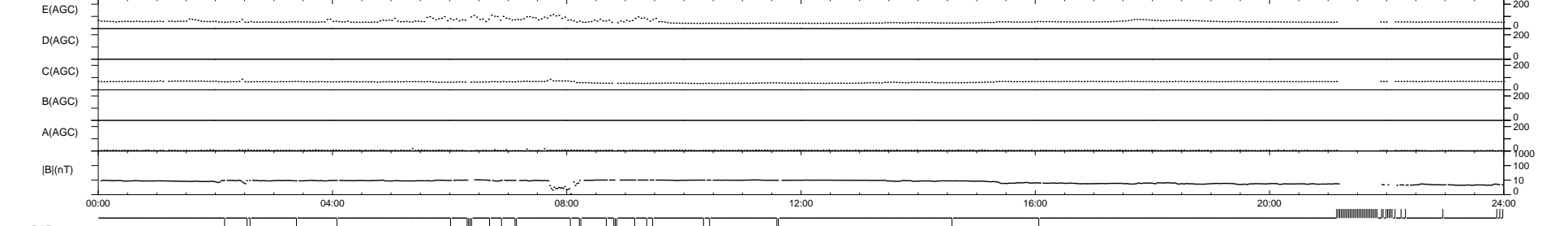
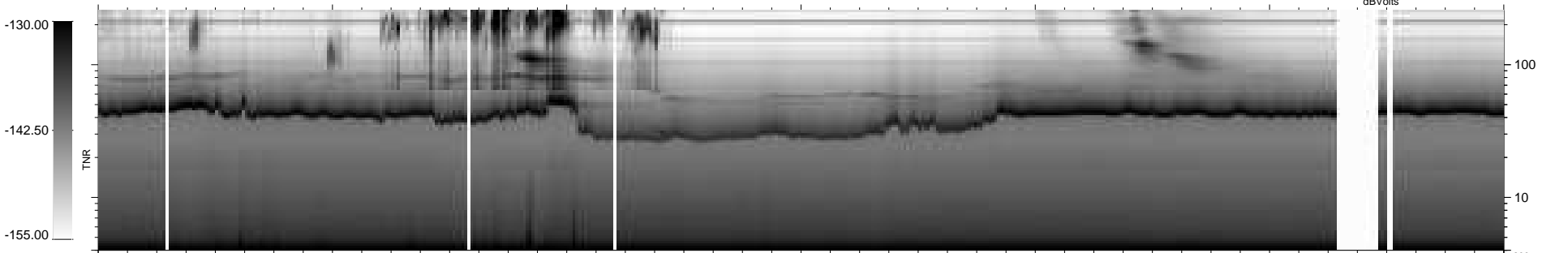
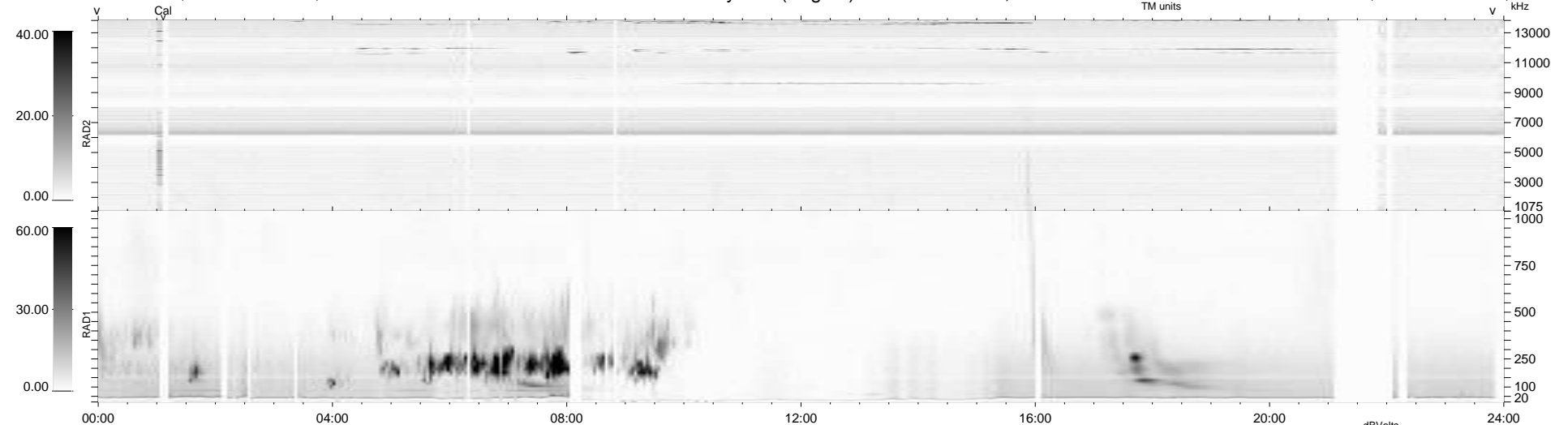
30 bad + 867 good MF/939MF projected (92%) - 42 missing MFs  
 Avg interval = 180 secs  
 Re = 231.51 (210.46, 96.26, -6.07 GSE)

windlib 2.0b

LZ version = v01

### WIND/WAVES Summary Plot (Page 1) for 01-FEB-2016, DOY = 32

DAILY 2016-02-02 09:52:06  
 Re = 232.91 (211.65, 97.04, -5.60 GSE)



RAD2  
 Antenna Ey  
 Mode LIN(1)  
 SUM/SEP SEP  
 Toggle OFF

RAD1  
 Antenna Ex  
 Mode LIS(2,4)  
 SUM/SEP SUM  
 Toggle OFF

TNR  
 Antenna ExEy  
 Mode A-32  
 Sweep ACE