

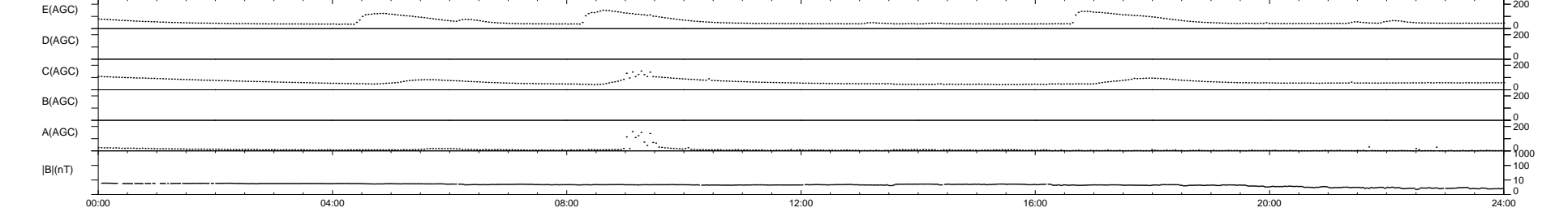
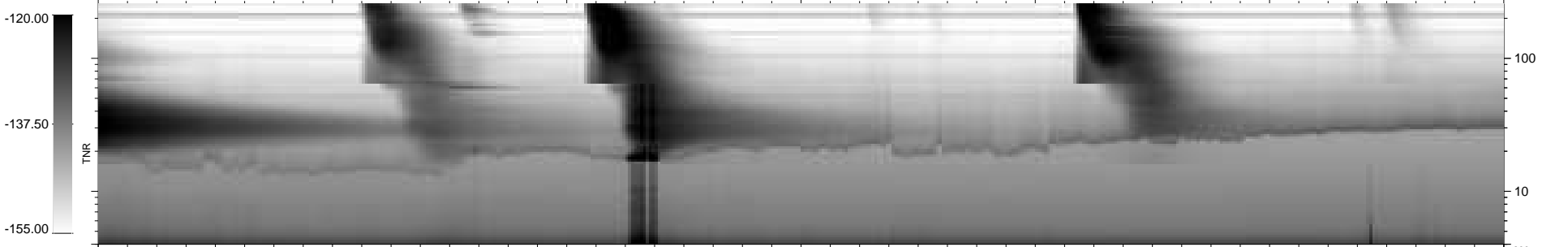
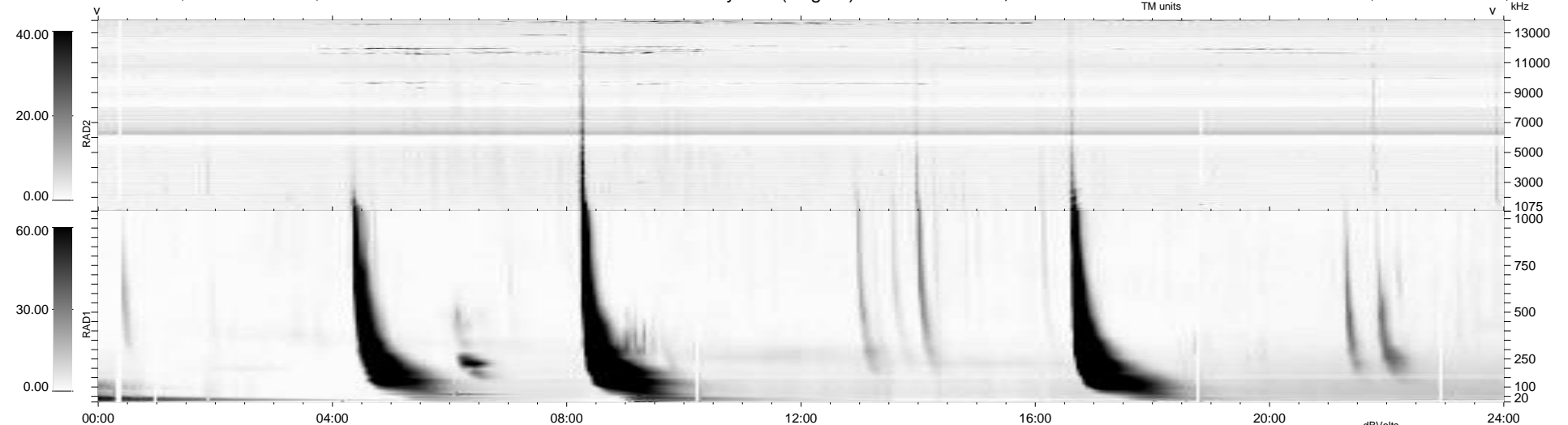
23 bad + 916 good MF/939MF projected (97%) - 0 missing MFs  
 Avg interval = 180 secs  
 Re = -227.24 (207.07, 93.29, -7.44 GSE)

windlib 2.0b

LZ version = v01

### WIND/WAVES Summary Plot (Page 1) for 29-JAN-2016, DOY = 29

DAILY 2016-01-30 19:52:05  
 Re = 228.65 (208.15, 94.37, -6.99 GSE)



```

RAD2
Antenna  Ey
Mode      LIN(1)
SUM/SEP  SEP
Toggle   OFF

RAD1
Antenna  Ex
Mode     LIS(2,4)
SUM/SEP  SUM
Toggle   OFF

TNR
Antenna  ExEy
Mode     A-32
Sweep    ACE
  
```