

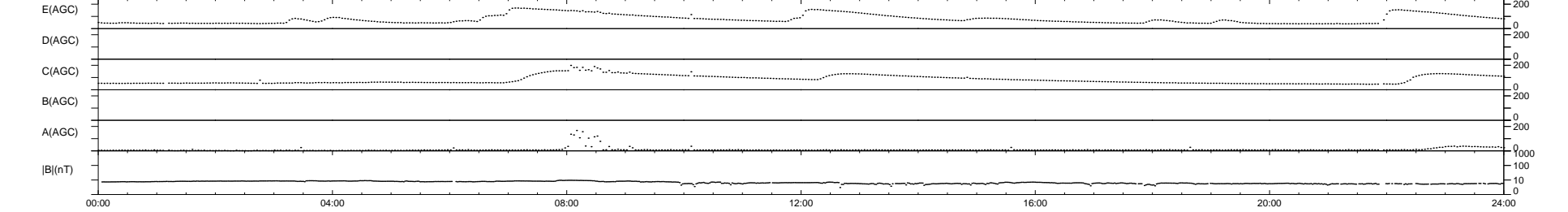
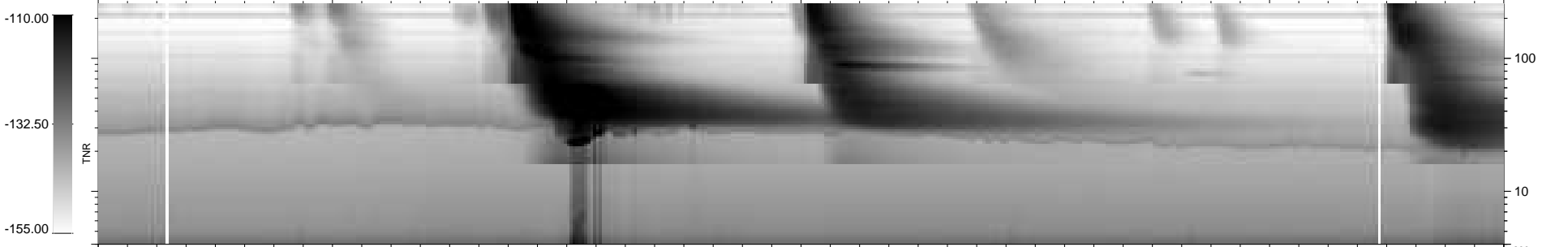
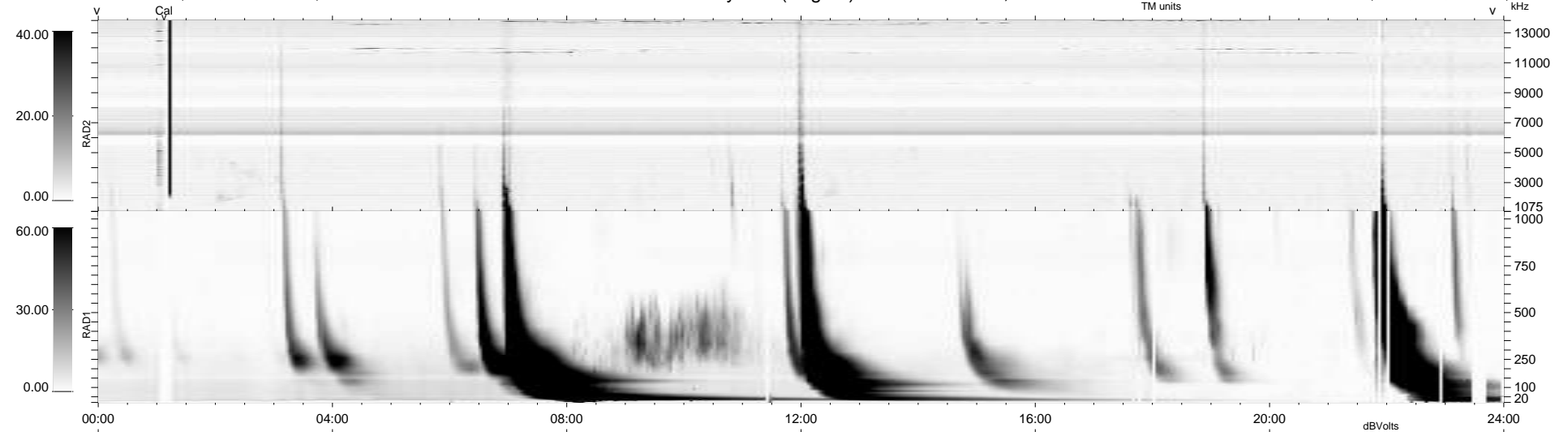
23 bad + 916 good MF/939MF projected (97%) - 0 missing MFs  
 Avg interval = 180 secs  
 Re = 225.82 (206.03, 92.10, -7.88 GSE)

windlib 2.0b

LZ version = v02

### WIND/WAVES Summary Plot (Page 1) for 28-JAN-2016, DOY = 28

DAILY 2016-02-04 17:52:07  
 Re = 227.23 (207.06, 93.28, -7.44 GSE)



```

RAD2
Antenna Ey .....
Mode LIN(1) .....
SUM/SEP SEP .....
Toggle OFF .....

RAD1
Antenna Ex .....
Mode LIS(2,4) .....
SUM/SEP SUM .....
Toggle OFF .....

TNR
Antenna ExEy .....
Mode A-32 .....
Sweep ACE .....
  
```