

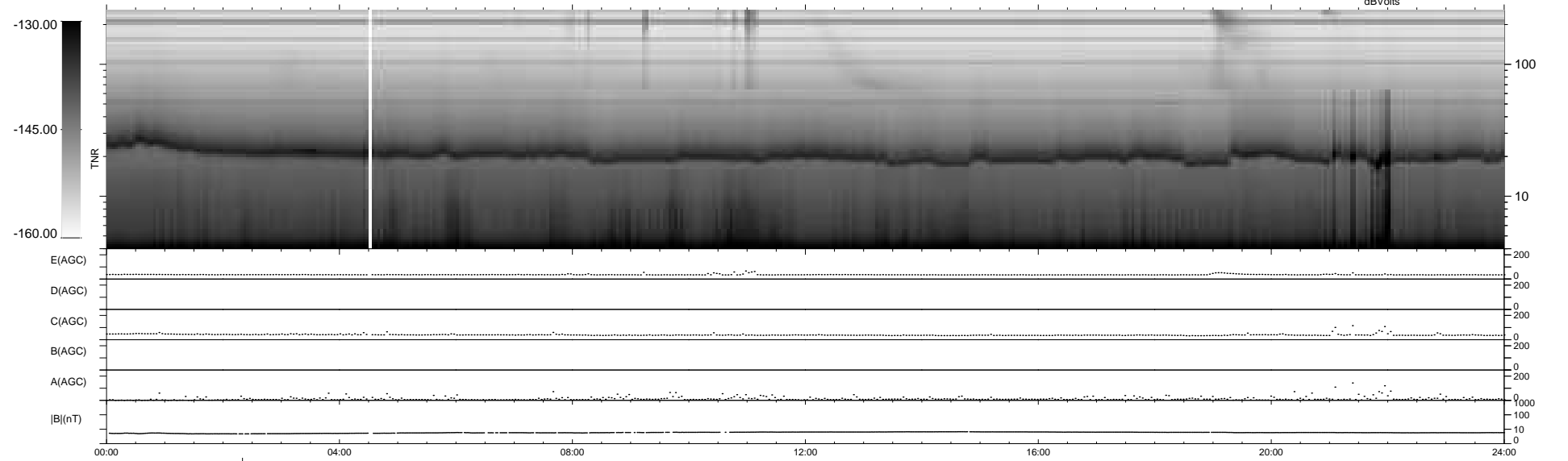
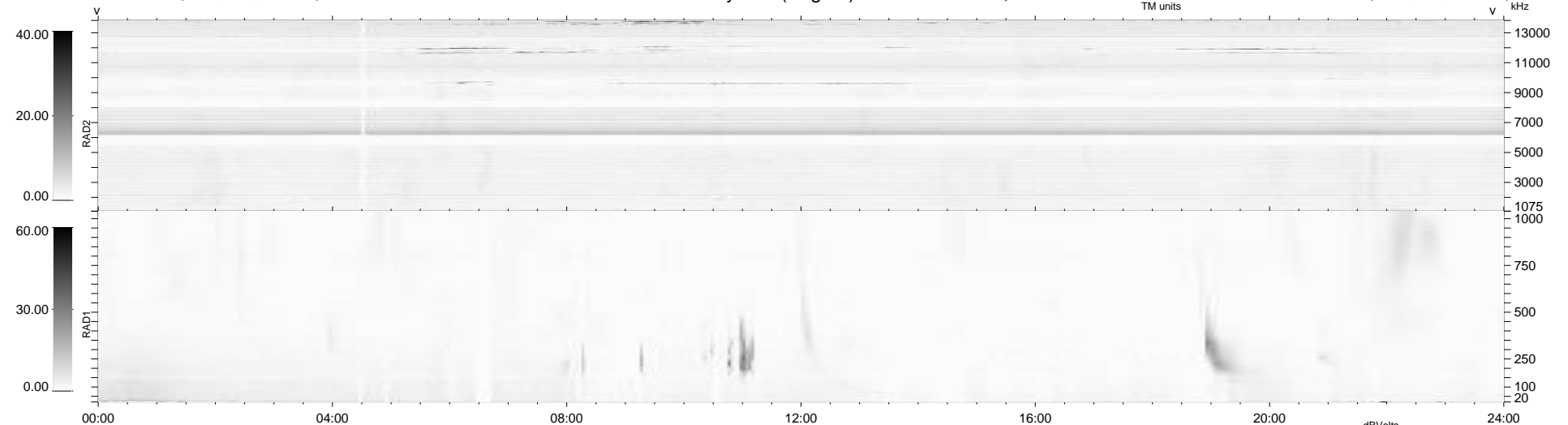
33 bad + 905 good MF/939MF projected (96%) - 1 missing MF
 Avg interval = 180 secs
 Re = -221.66 (203.28, 87.91, -9.13 GSE)

windlib 2.0b

LZ version = v01

WIND/WAVES Summary Plot (Page 1) for 25-JAN-2016, DOY = 25

DAILY 2016-01-27 02:52:06
 Re = 223.02 (204.13, 89.41, -8.73 GSE)



```

RAD2
Antenna Ey .....
Mode LIN(1) .....
SUM/SEP SEP .....
Toggle OFF .....

RAD1
Antenna Ex .....
Mode LIS(2,4) .....
SUM/SEP SUM .....
Toggle OFF .....

TNR
Antenna ExEy .....
Mode A-32 .....
Sweep ACE .....
  
```