

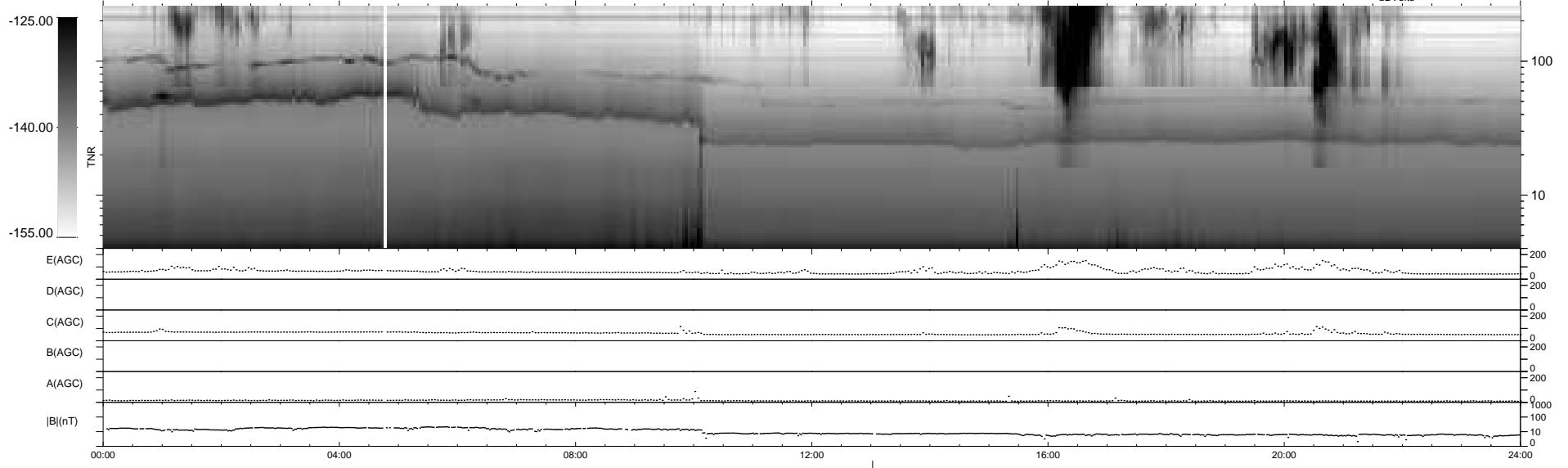
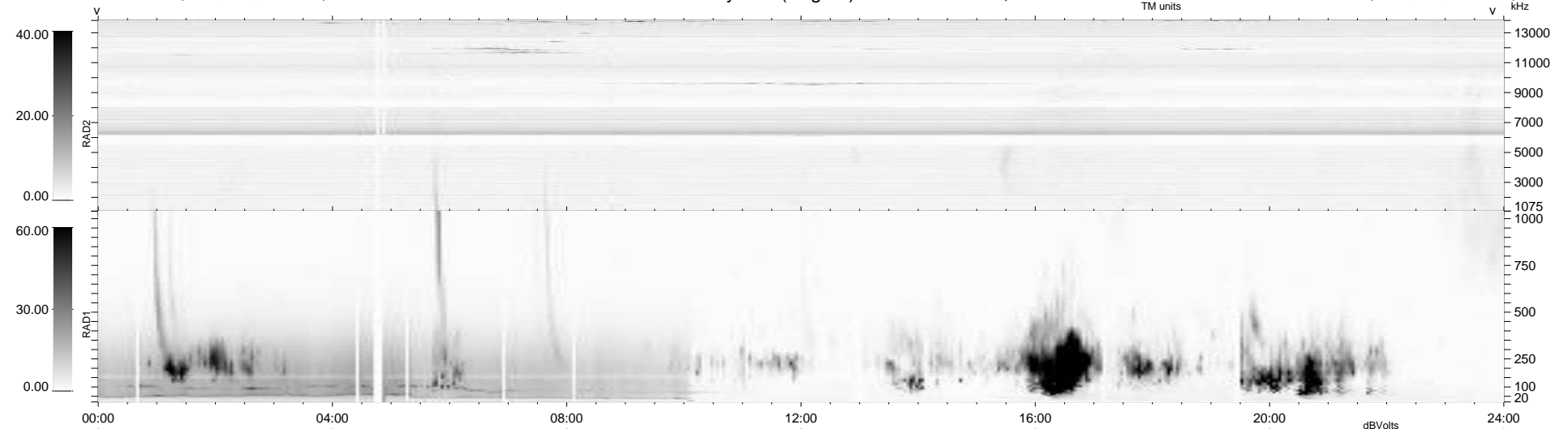
32 bad + 906 good MF/939MF projected (96%) - 1 missing MF
 Avg interval = 180 secs
 Re = - 216.43 (200.55, 80.69, -10.59 GSE)

windlib 2.0b

LZ version = v01

WIND/WAVES Summary Plot (Page 1) for 21-JAN-2016, DOY = 21

DAILY 2016-01-22 18:52:04
 Re = 217.69 (201.12, 82.67, -10.25 GSE)



```

RAD2
Antenna Ey .....
Mode LIN(1) .....
SUM/SEP SEP .....
Toggle OFF .....

RAD1
Antenna Ex .....
Mode LIS(2,4) .....
SUM/SEP SUM .....
Toggle OFF .....

TNR
Antenna ExEy .....
Mode A-32 .....
Sweep ACE .....
  
```