

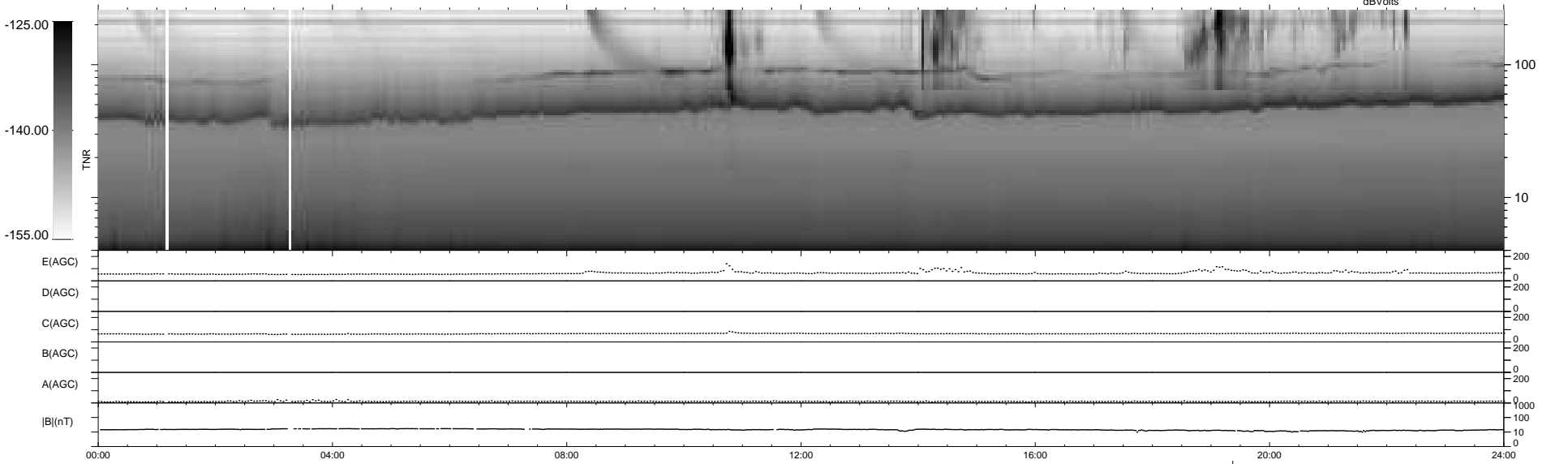
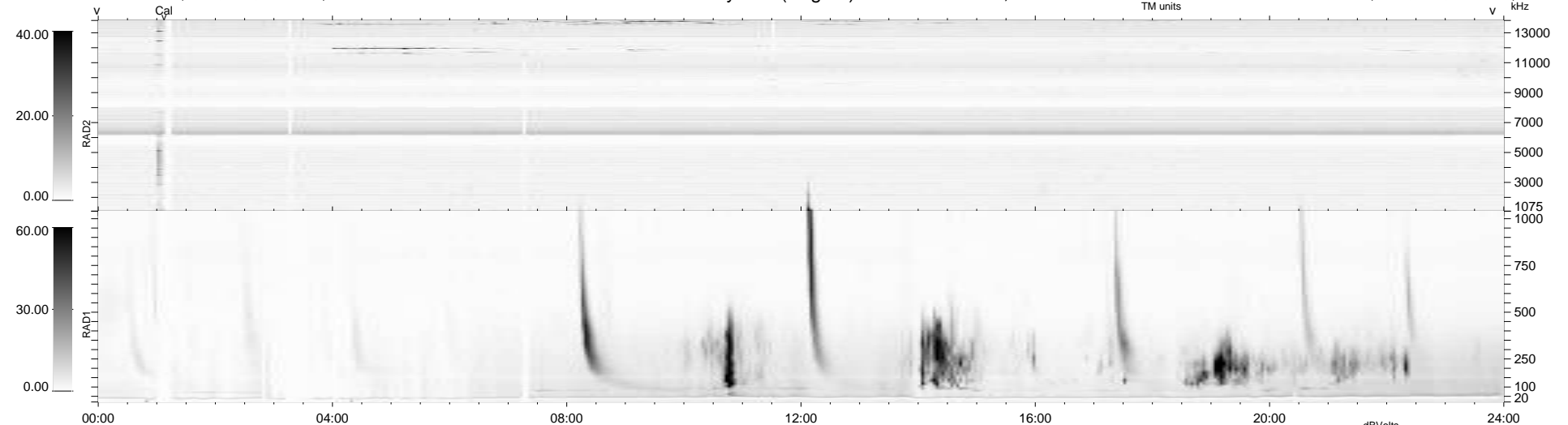
25 bad + 914 good MF/940MF projected (97%) - 1 missing MF
 Avg interval = 180 secs
 Re = - 215.18 (200.03, 78.55, -10.91 GSE)

windlib 2.0b

LZ version = v02

WIND/WAVES Summary Plot (Page 1) for 20-JAN-2016, DOY = 20

DAILY 2016-01-27 11:52:06
 Re = 216.42 (200.54, 80.67, -10.59 GSE)



```

RAD2
Antenna Ey .....
Mode LIN(1) .....
SUM/SEP SEP .....
Toggle OFF .....

RAD1
Antenna Ex .....
Mode LIS(2,4) .....
SUM/SEP SUM .....
Toggle OFF .....

TNR
Antenna ExEy .....
Mode A-32 .....
Sweep ACE .....
  
```