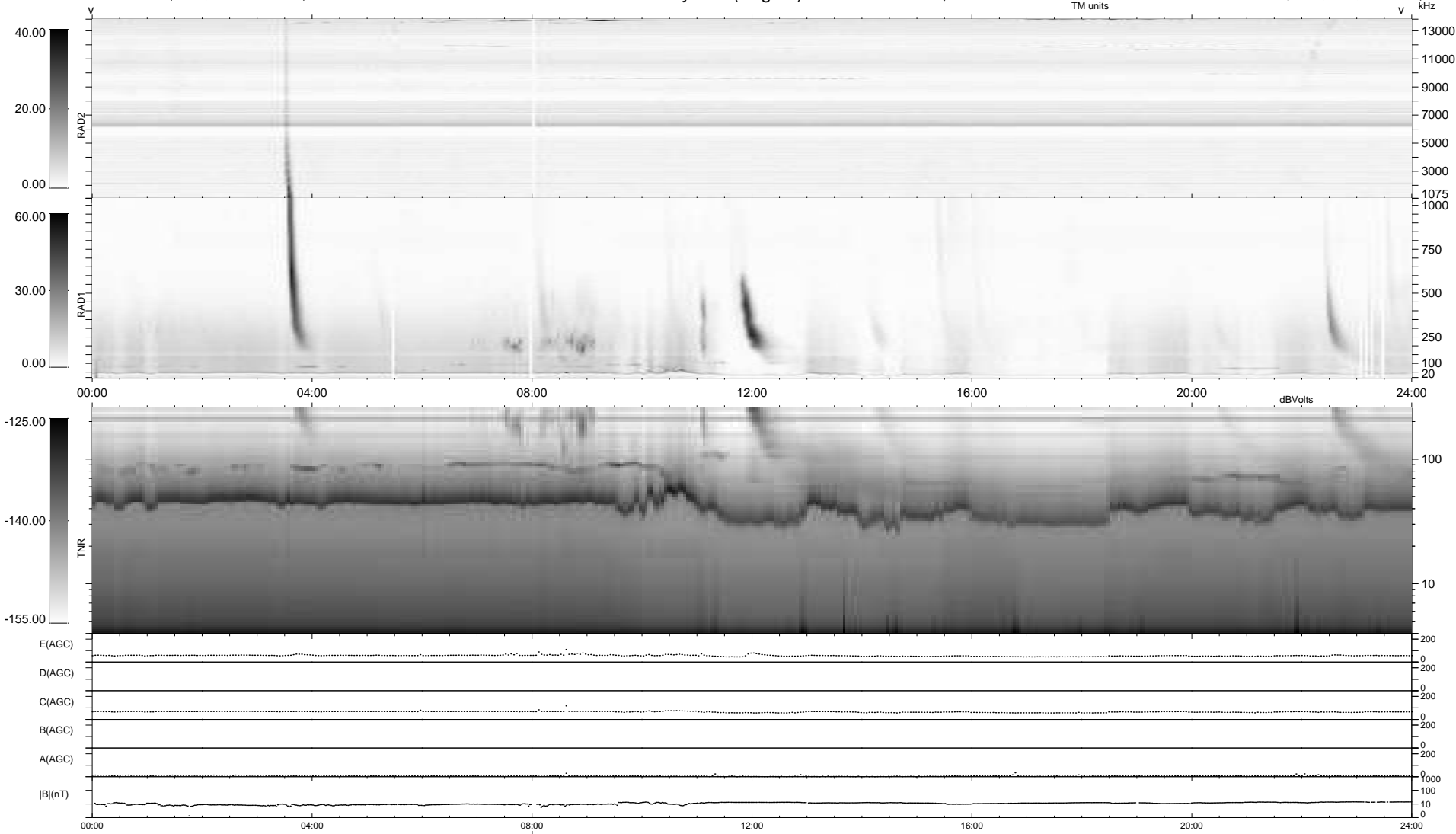


14 bad + 924 good MF/939MF projected (98%) - 1 missing MF
 Avg interval = 180 secs
 Re = 213.95 (199.57, 76.28, -11.21 GSE)

windlib 2.0b LZ version = v01
 DAILY 2016-01-20 17:52:05
 Re = 215.17 (200.03, 78.54, -10.91 GSE)

WIND/WAVES Summary Plot (Page 1) for 19-JAN-2016, DOY = 19



RAD2 Antenna Ey
 Mode LIN(1)
 SUM/SEP SEP
 Toggle OFF
 RAD1 Antenna Ex
 Mode LIS(2,4)
 SUM/SEP SUM
 Toggle OFF
 TNR Antenna ExEy
 Mode A-32
 Sweep ACE