

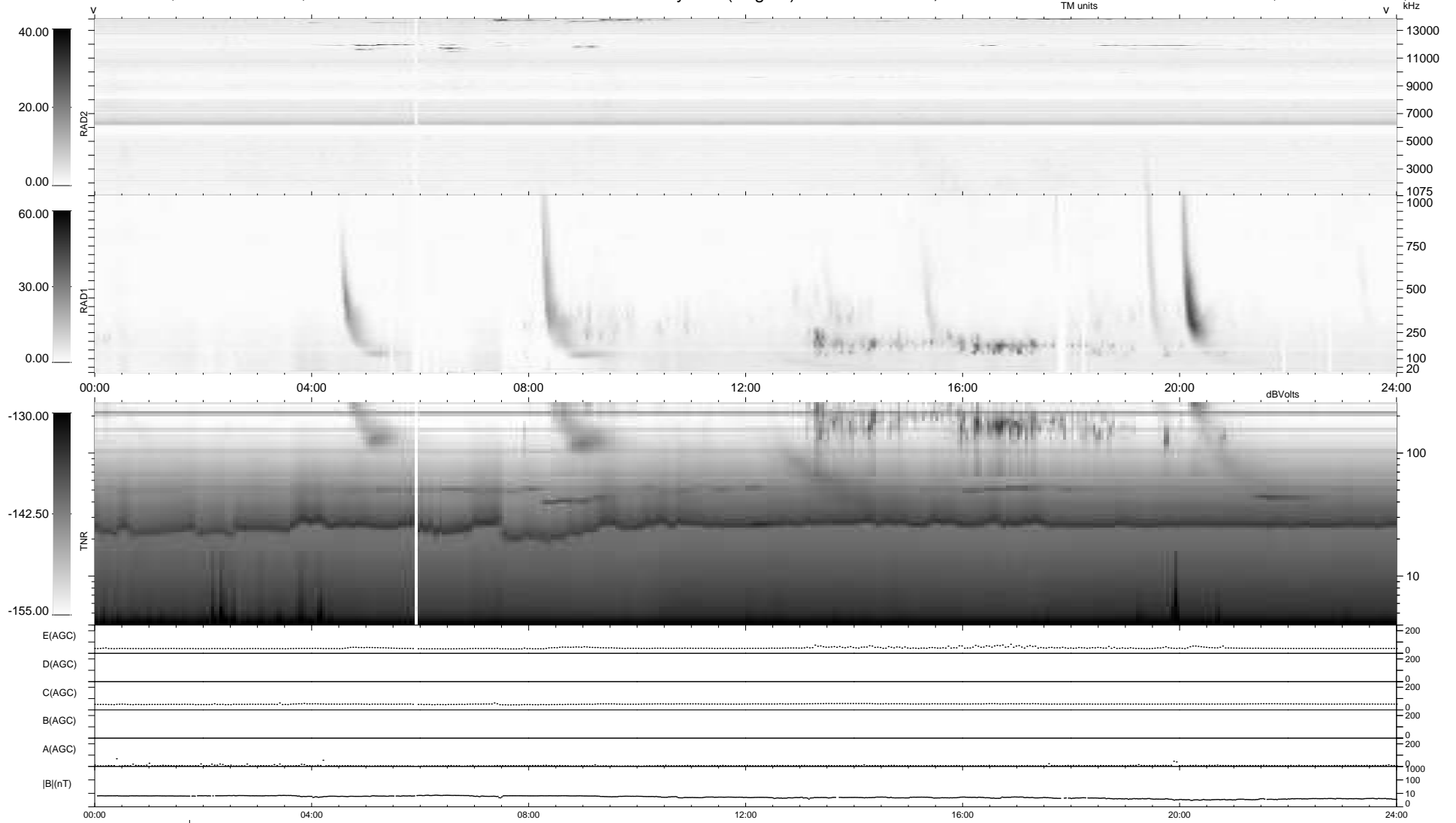
29 bad + 909 good MF/939MF projected (96%) - 1 missing MF
 Avg interval = 180 secs
 Re = 211.54 (198.81, 71.32, -11.75 GSE)

windlib 2.0b

LZ version = v01

WIND/WAVES Summary Plot (Page 1) for 17-JAN-2016, DOY = 17

DAILY 2016-01-19 02:52:04
 Re = 212.73 (199.17, 73.85, -11.49 GSE)



```

RAD2
Antenna  Ey .....
Mode     LIN(1) .....
SUM/SEP  SEP .....
Toggle   OFF .....

RAD1
Antenna  Ex .....
Mode     LIS(2,4) .....
SUM/SEP  SUM .....
Toggle   OFF .....

TNR
Antenna  ExEy .....
Mode     A-32 .....
Sweep    ACE .....
  
```