

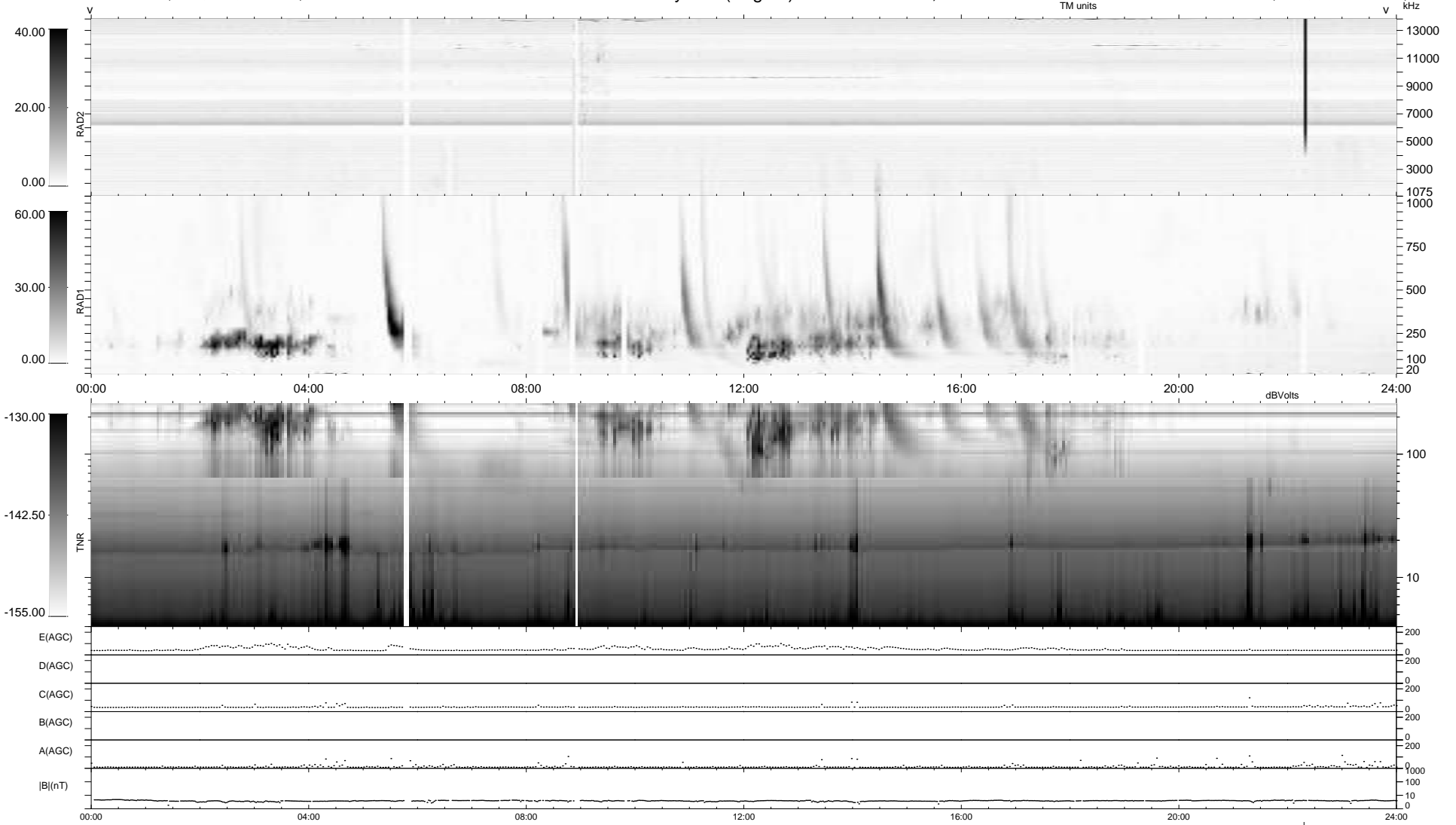
33 bad + 905 good MF/939MF projected (96%) - 1 missing MF
 Avg interval = 180 secs
 Re = -209.19 (198.20, 65.80, -12.21 GSE)

windlib 2.0b

LZ version = v01

WIND/WAVES Summary Plot (Page 1) for 15-JAN-2016, DOY = 15

DAILY 2016-01-16 18:52:05
 Re = 210.35 (198.49, 68.61, -11.99 GSE)



```

RAD2
Antenna Ey
Mode LIN(1)
SUM/SEP SEP
Toggle OFF

RAD1
Antenna Ex
Mode LIS(2,4)
SUM/SEP SUM
Toggle OFF

TNR
Antenna ExEy
Mode A-32
Sweep ACE
  
```